

NEW

Kazalo Index Indice Inhalt

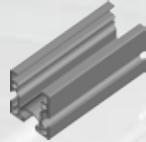
Al. roller
rail
component

96-97



Al. profile
40 x 45 for
roller rail

98



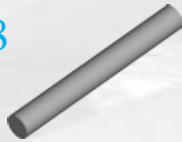
Roller
carrier

98



Roller
axis

98



Roller
not guided

99



Roller
lateral
guided

99



Profile end
plate - low

100



Profile end
plate - high

100



Rail holder
- high

101



Rail holder
- low

101



102-103



Fe -roller
rail
component

104



Round tube
holder

104



Roller rail
Fe - holder
low

105



Roller rail
end plate
- high

105



Roller rail
Fe - holder
- high

106



Roller rail
end plate
- low

106



Roller
rail section
link

107



Round tube
Al,
threaded
insert

108



Roller rail
Fe with
lateral
control

108



Roller rail
Fe without
lateral
control



Roller rails

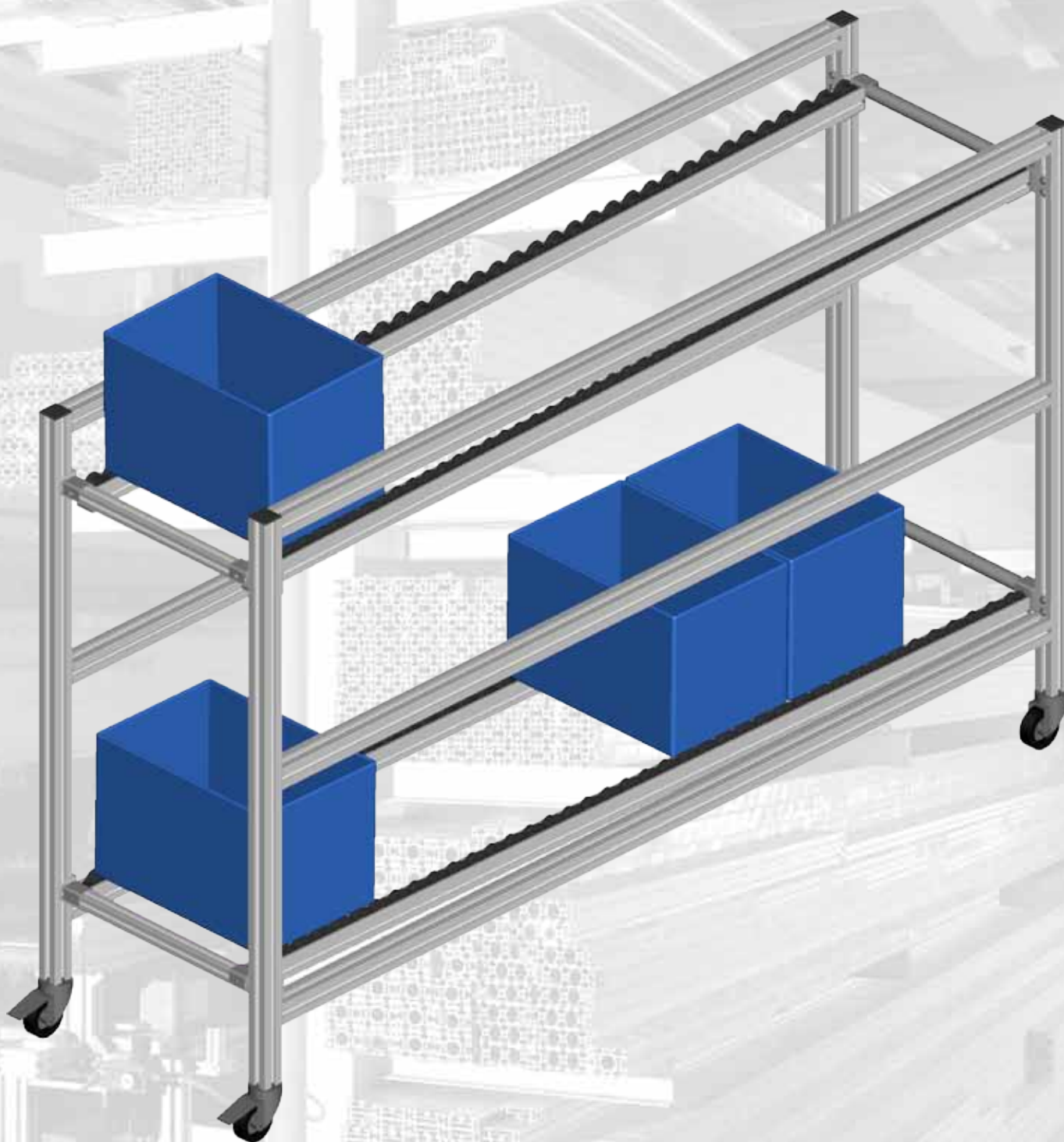
TRANSPORT LINES AND FLEXIBLE CONSTRUCTIONS IN AUTOMATION

Naziv
Description

Al. Valjčna proga - sestav
Al. Roller rail structure

Descrizione
Beschreibung

Al. Composizione ruliera
Al. Rollenschinen satz

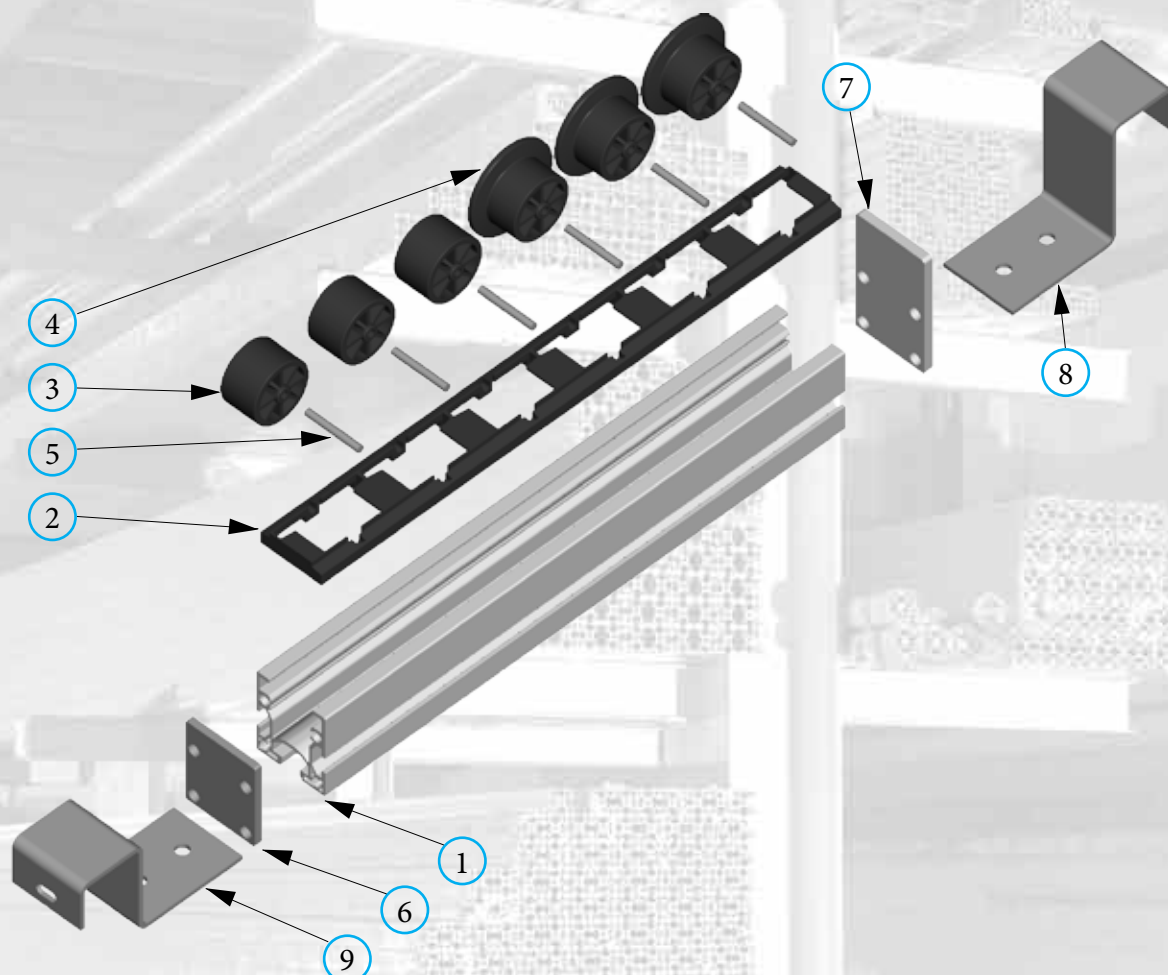


Naziv
Description

Elementi za valjčne proge Al.
Al. Roller rail composition

Descrizione
Beschreibung

Composizione elementi ruliera Al.
Zusammensetzung Rollenschine Al



Material Aluminij / PA / pocinkano jeklo
Material Aluminium / PA / Zinc steel
Materiale Aluminio / PA / Acciaio zincato
Material Aluminium /PA / Stahl-verzinkt

NEW

Pos.	Opis	Descriptions	Descrizione	Beschreibung	Code
1	Al. profil 40x45	AL. profile 40x45	Al. profilo 40x45	Al. profile 40x45	14001
2	Nosilec valjčka PA	Roller carrier	Portante rotella	Roller Träger	14002
3	Kolo val. proge brez vodenja	Roller - not guided	Rotella senza bord.	Rolleneinsatz	14003
4	Kolo val. proge z bočnim vodenjem	Roller - lateral guided	Rotella con bordino	Rolleneinsatz mit Bordscheibe	14004
5	Osovina valjčka Ø4x31	Roller axis Ø4 x 31	Asse rotella Ø4x31	Rollenwelle Ø4 x 31	14005
6	Zaključna ploščica profila valjčne proge nizka	End plate - low	Piastra chiusura binario - bassa	Schlussplatte - Tief	14006
7	Zaključna ploščica profila valjčne proge visoka	End plate - high	Piastra chiusura binario - alta	Schlussplatte - Hoch	14007
8	Nosilec profila valjčne proge visok	Rail holder - high	Supporto profilo binario - alto	Rollenschienen Träger - Hoch	14008
9	Nosilec profila valjčne proge nizek	Rail holder - low	Supporto profilo binario - basso	Rollenschienen Träger - Tief	14009



Roller rails

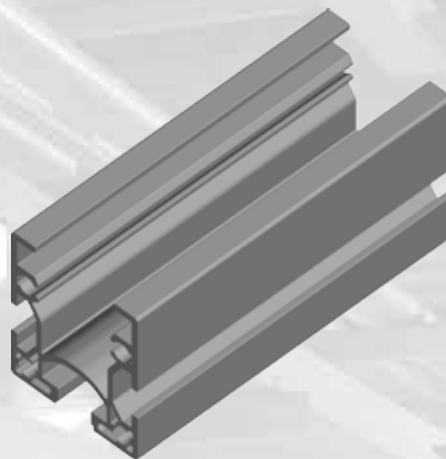
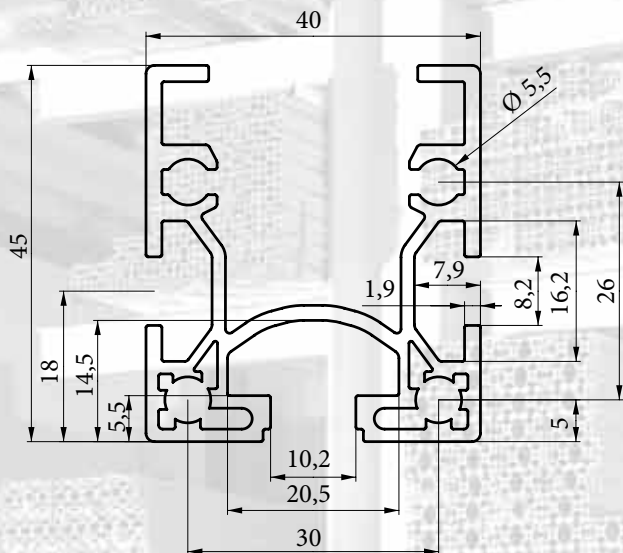
TRANSPORT LINES AND FLEXIBLE CONSTRUCTIONS IN AUTOMATION

Naziv
Description

Al. Profil 40x45 valjčne proge
Al. Profile 40x45 for roller rail

Descrizione
Beschreibung

Profilo 40x45 per rulliere
Al. Profile für Rollenschienen



Material Aluminij
Material Aluminium
Materiale Aluminio
Material Aluminium



8/10

Al. Profile 40x45
for roller rail

NEW

Code

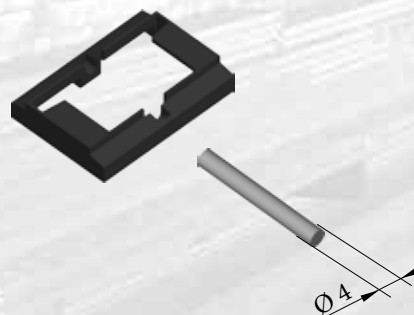
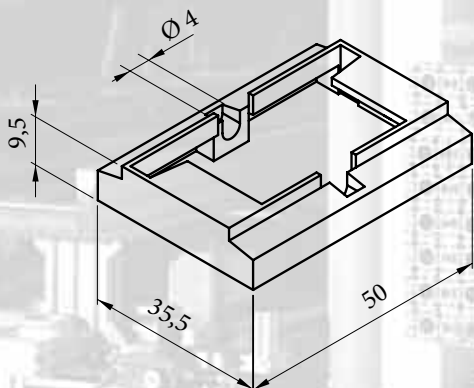
14001

Naziv
Description

Nosilec valjčka / Osovina valjčka
Roller carrier / Roller axis

Descrizione
Beschreibung

Portante rotella / Asse per rotella
Roller Träger / Rollenwelle



Material PA / pocinkano jeklo
Material PA / Zinc steel
Materiale PA / Acciaio zincato
Material PA / Stahl-verzinkt

Roller carrier Ø4 x 31

Roller axis Ø4 x 31

NEW

Code

14002

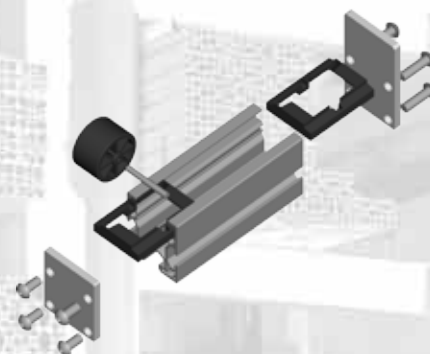
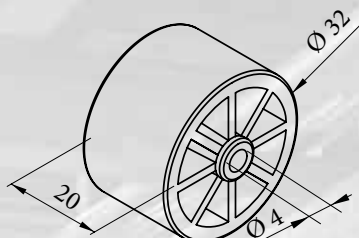
14005

Naziv
Description

Kolo valjčne proge brez vodenja
Roller - not guided

Descrizione
Beschreibung

Rotella senza bordino
Rolleneinsatz ohne Bordscheibe



Material PA
Material PA
Materiale PA
Material PA

NEW

Roller PA - not guided

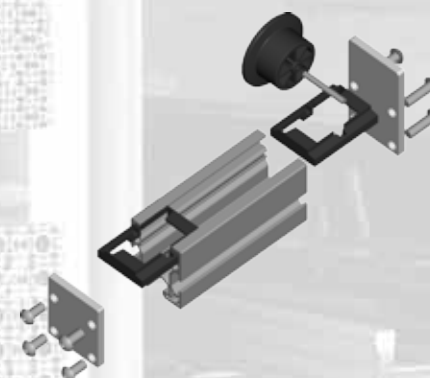
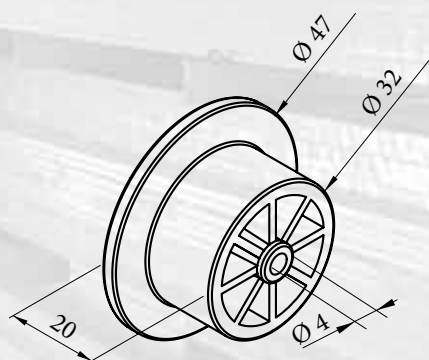
Code
14003

Naziv
Description

Kolo z bočnim vodenjem
Roller - lateral guided

Descrizione
Beschreibung

Rotella con bordino
Rolleneinsatz mit Bordscheibe



Material PA
Material PA
Materiale PA
Material PA

NEW

Roller PA - lateral guided

Code
14004



Roller rails

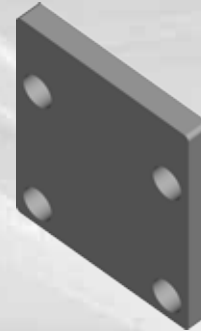
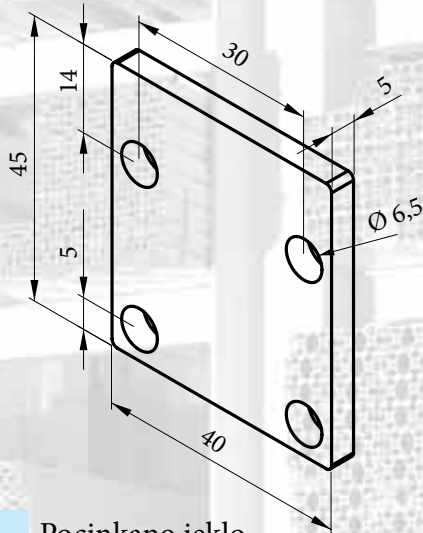
TRANSPORT LINES AND FLEXIBLE CONSTRUCTIONS IN AUTOMATION

Naziv
Description

Zaključna ploščica profila - nizka
End plate - low

Descrizione
Beschreibung

Piastra chiusura profilo - bassa
Schlussplatte - Tief



NEW

Material Pocinkano jeklo
Material Zinc steel
Materiale Acciaio zincato
Material Stahl-verzinkt

Profile end plate - low

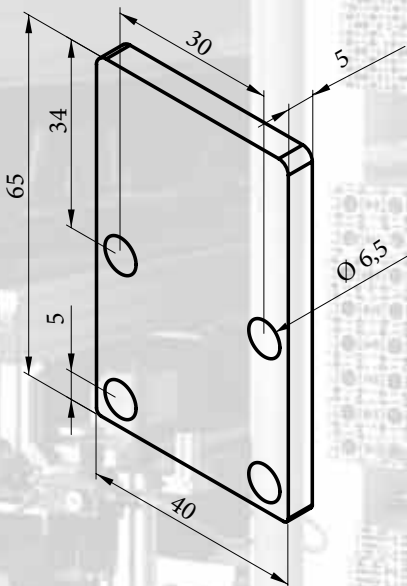
Code
14006

Naziv
Description

Zaklj. plošč. profila valj. p. visoka
Profile end plate - high

Descrizione
Beschreibung

Piastra chiusura profilo - alta
Profile schlussplatte - Hoch



NEW

Material Pocinkano jeklo
Material Zinc steel
Materiale Acciaio zincato
Material Stahl-verzinkt

Profile end plate - high

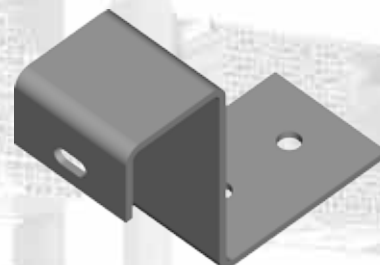
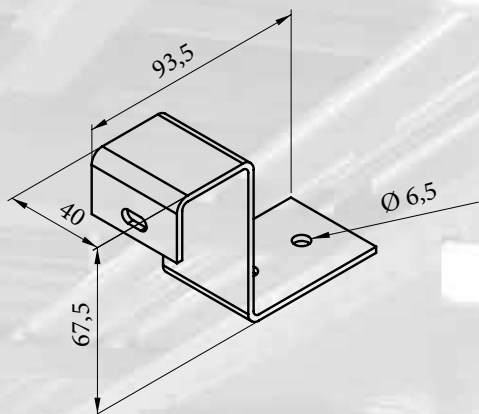
Code
14007

Naziv
Description

Nosilec proge - visok
Rail holder - high

Descrizione
Beschreibung

Supporto profilo profilo - alto
Rollenschienen Träger - Hoch



NEW

Material Pocinkano jeklo
Material Zinc steel
Materiale Acciaio zincato
Material Stahl-verzinkt

Rail holder - high

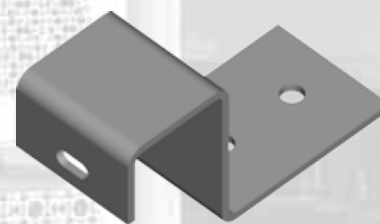
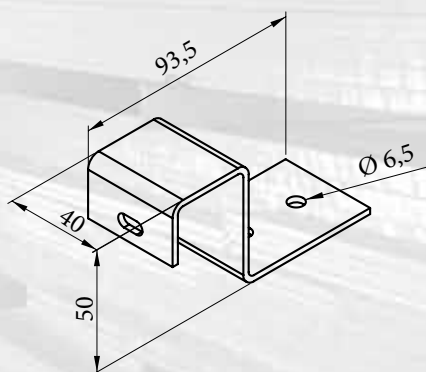
Code
14008

Naziv
Description

Nosilec proge - nizek
Rail holder - low

Descrizione
Beschreibung

Supporto profilo profilo - basso
Rollenschienen Träger - Tief



NEW

Material Pocinkano jeklo
Material Zinc steel
Materiale Acciaio zincato
Material Stahl-verzinkt

Rail holder - low

Code
14009



Roller rails

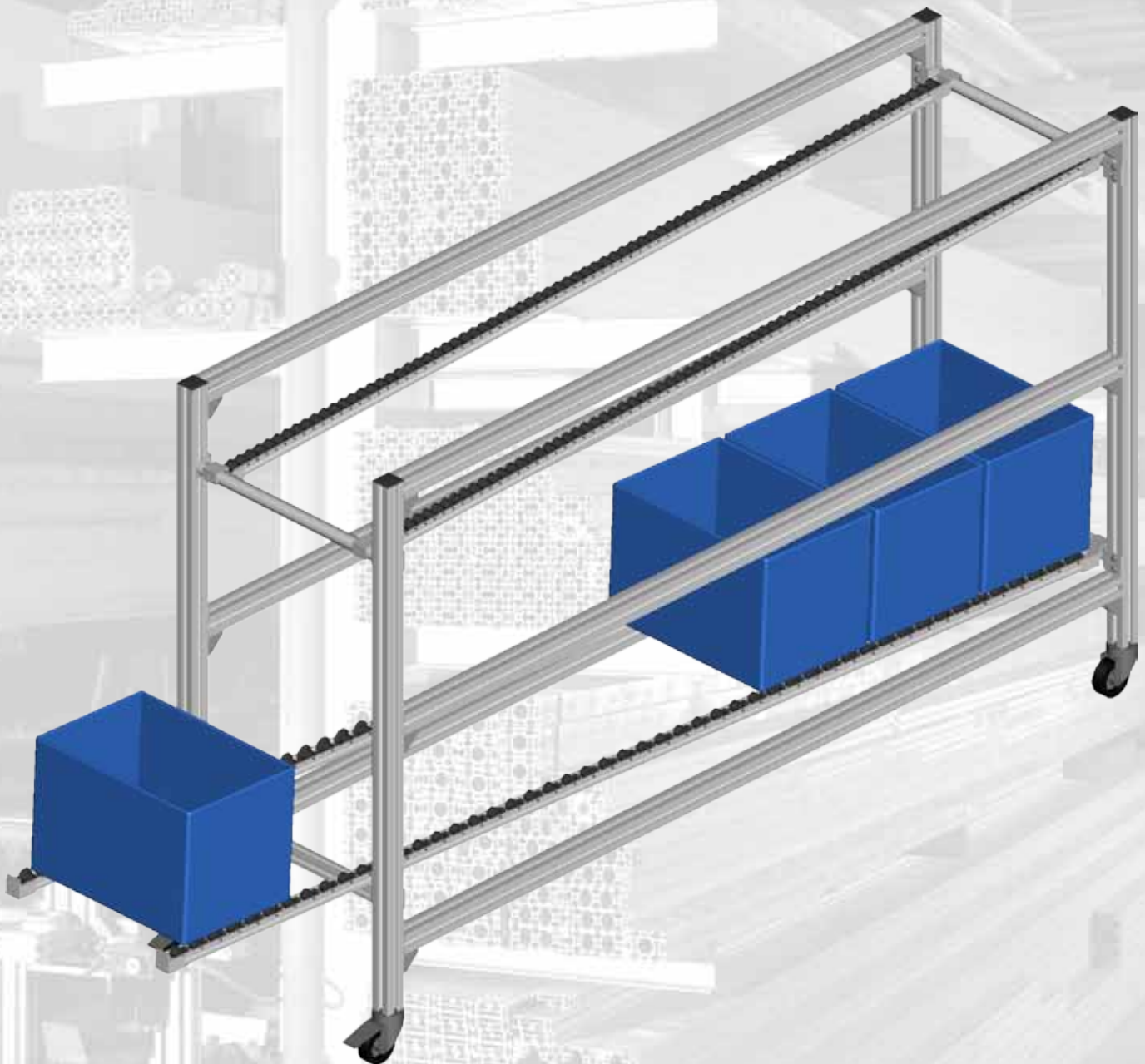
TRANSPORT LINES AND FLEXIBLE CONSTRUCTIONS IN AUTOMATION

Naziv
Description

Valjčna proga - sestav - Fe
Fe - Roller rail structure

Descrizione
Beschreibung

Composizione rulliera - Fe
Rullenschinen satz - Fe

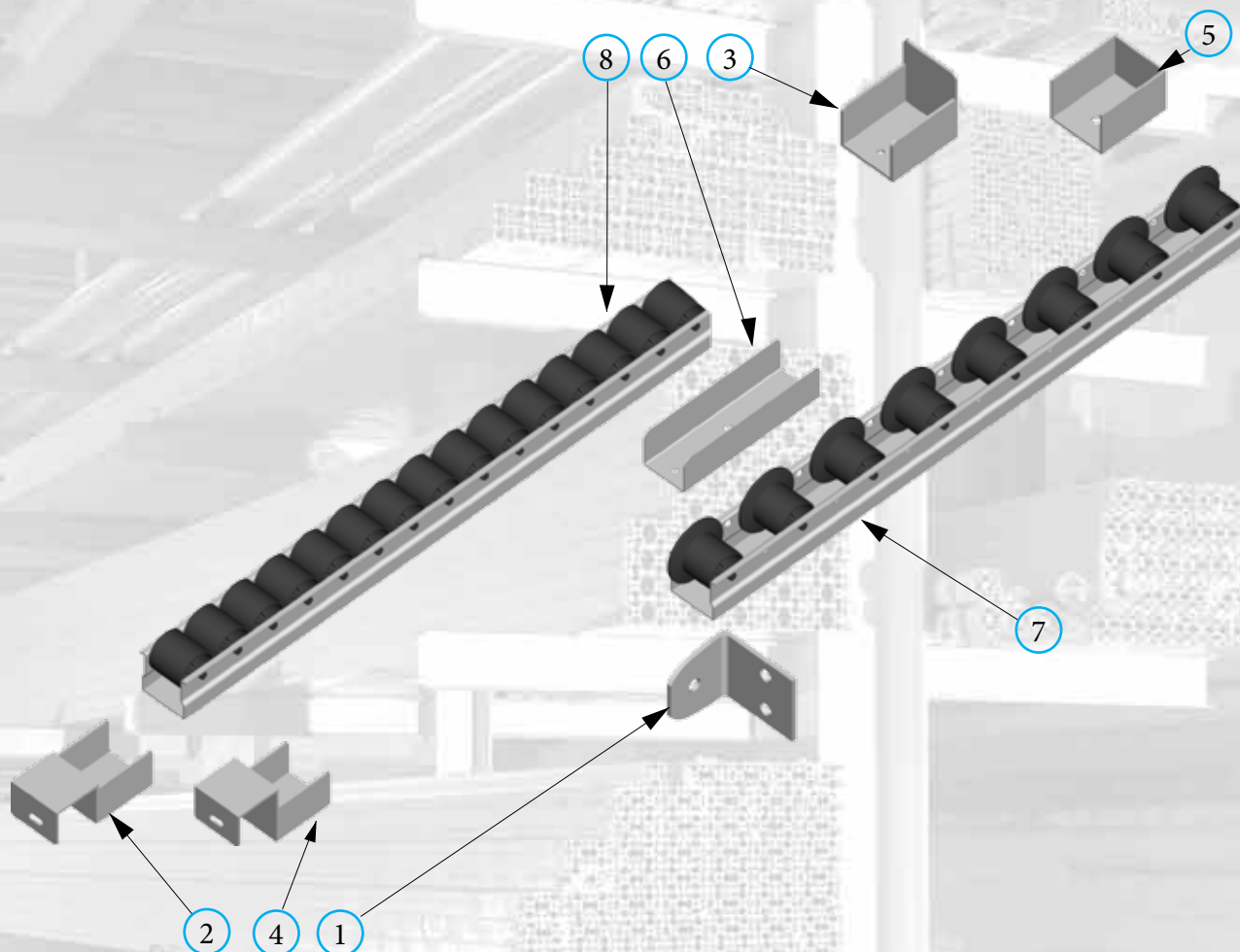


Naziv
Description

Elementi za valjčne proge Fe
Fe Roller rail composition

Descrizione
Beschreibung

Composizione elementi ruliera Fe
Zusammensetzung Rollenschine Fe



NEW

Pos.	Opis	Descriptions	Descrizione	Beschreibung	Code
1	Nosilec podporne cevi za 14015	Round tube holder for 14015	Portante per tubo supporto 14015	Stützrohr Träger für 14015	14010
2	Nosilec valjčne proge Fe nizek	Roller rail Fe holder - low	Supporto profilo binario Fe - basso	Rollenschienen Träger Fe - Tief	14011
3	Končnik valjčne proge Fe visok	Roller rail Fe end plate - high	Estremita profilo binario Fe - alto	Rollenschienenverschluss - Hoch	14012
4	Nosilec valjčne proge Fe visok	Roller rail Fe holder - high	Supporto profilo binario Fe - alto	Rollenschienen Träger Fe - Hoch	14013
5	Končnik valjčne proge Fe nizek	Roller rail Fe end plate - low	Estremita profilo binario Fe - basso	Rollenschienenverschluss - Tief	14014
6	Vzdolžni spoj valjčne proge Fe	Roller rail Fe section link	Giunto binario longitudinale - Fe	Rollenschienen Fe - Langsverbinding	14016
7	Valjčna proga Fe z bočnim vodenjem	Roller rail Fe with lateral control	Profilo binario Fe - rotelle con bordini	Rollenschienen Fe mit Bordscheibe L=2997	14017
8	Valjčna proga Fe brez vodenja	Roller rail Fe without lateral control	Profilo binario Fe - rotelle senza bordini	Rollenschienen Fe ohne Bordscheibe L=2997	14018
9	Navojni vložek M8 za cev fi-30	Threaded insert M8 for tube Ø30	Inserto filetato M8 per tubo Ø30	Gewindeinsatz M8 für Ø30	14019



Roller rails

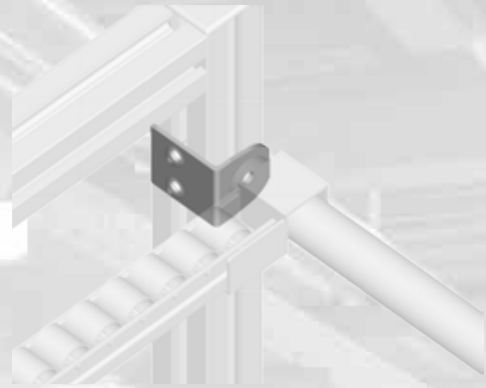
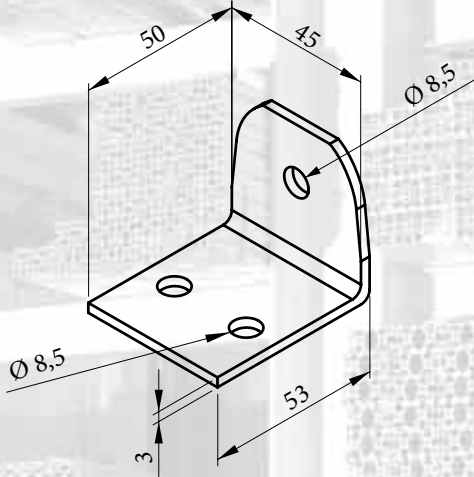
TRANSPORT LINES AND FLEXIBLE CONSTRUCTIONS IN AUTOMATION

Naziv
Description

Nosilec podporne cevi - za 14015
Round tube holder - for 14015

Descrizione
Beschreibung

Portante per tubo supp 14015
Stützrohr Träger - für 14015



NEW

Material Pocinkano jeklo
Material Zinc steel
Materiale Acciaio zincato
Material Stahl-verzinkt

Round tube holder - for 14015

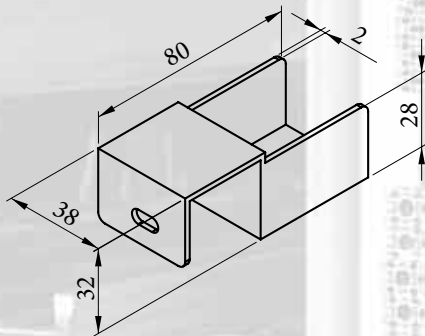
Code
14010

Naziv
Description

Nosilec valjčne proge Fe - nizek
Roller rail Fe holder - low

Descrizione
Beschreibung

Supp. profilo binario Fe - basso
Rollenschienen Träger Fe - Tief



NEW

Roller rail Fe holder - low

Code
14011

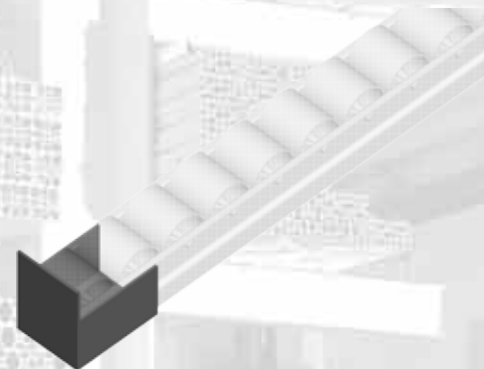
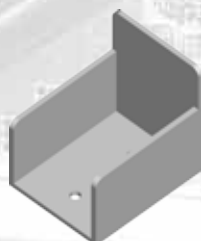
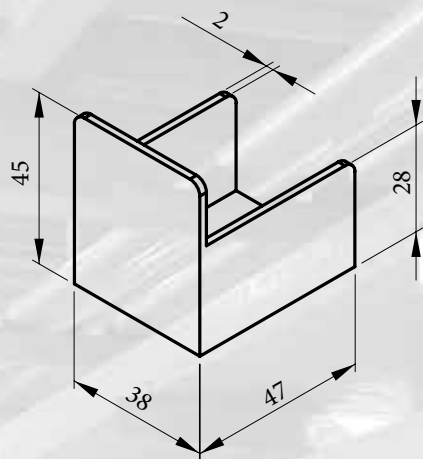
Material Pocinkano jeklo
Material Zinc steel
Materiale Acciaio zincato
Material Stahl-verzinkt

Naziv
Description

Končnik valjčne proge Fe - visok
Roller rail Fe end plate - high

Descrizione
Beschreibung

Estremita prof. binario Fe - alto
Rollenschienenendverschluss - Hoch



Material Pocinkano jeklo
Material Zinc steel
Materiale Acciaio zincato
Material Stahl-verzinkt

NEW

Roller rail end plate - high

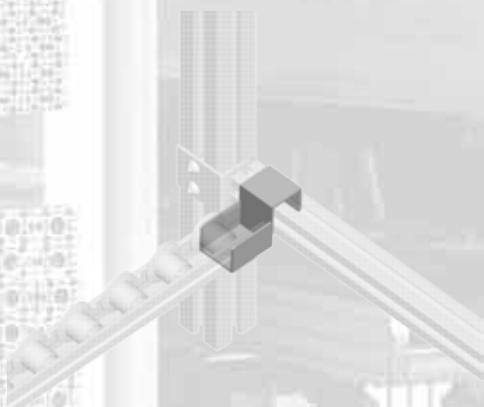
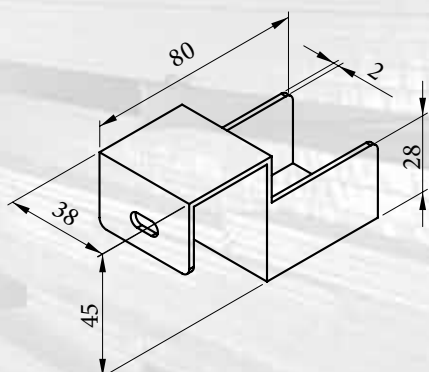
Code
14012

Naziv
Description

Nosilec valjčne proge Fe visok
Roller rail Fe holder high

Descrizione
Beschreibung

Supp. profilo binario Fe - alto
Rollenschienen Träger Fe - Hoch



Material Pocinkano jeklo
Material Zinc steel
Materiale Acciaio zincato
Material Stahl-verzinkt

NEW

Roller rail Fe holder - high

Code
14013



Roller rails

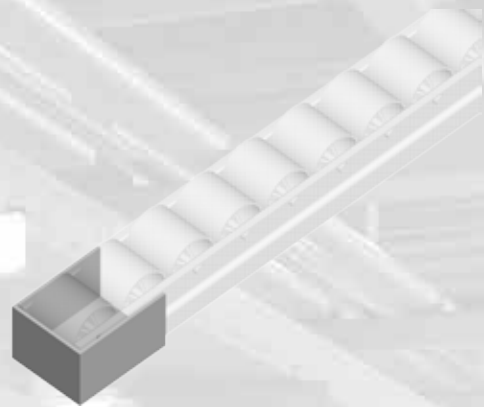
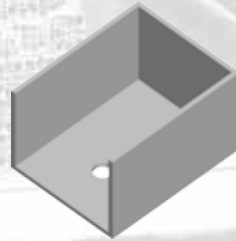
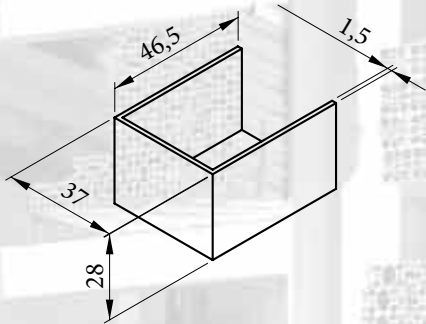
TRANSPORT LINES AND FLEXIBLE CONSTRUCTIONS IN AUTOMATION

Naziv
Description

Končnik valjčne proge Fe nizek
Roller rail Fe end plate low

Descrizione
Beschreibung

Estremita profilo binario Fe - basso
Rollenschieneendverschluss - Tief



Material Pocinkano jeklo
Material Zinc steel
Materiale Acciaio zincato
Material Stahl-verzinkt

NEW

Roller rail Fe end plate - low

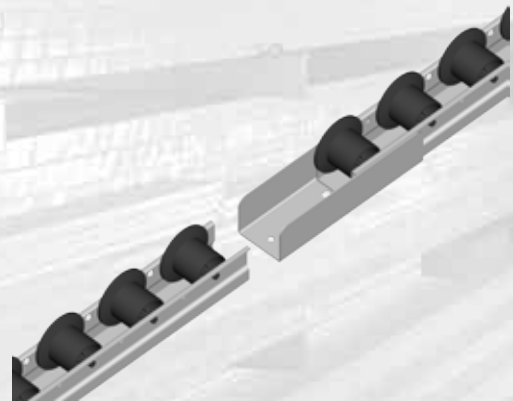
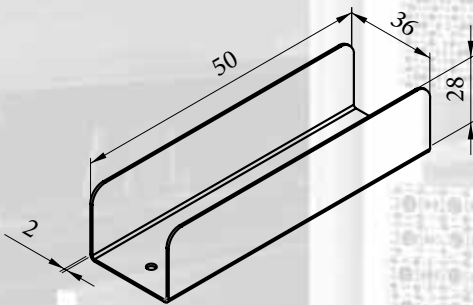
Code
14014

Naziv
Description

Vzdolžni spoj valjčne proge Fe
Roller rail Fe section link

Descrizione
Beschreibung

Giunto longitudinale binario Fe
Rollenschiene Fe -Langsverbinding



Material Pocinkano jeklo
Material Zinc steel
Materiale Acciaio zincato
Material Stahl-verzinkt

NEW

Roller rail Fe section link

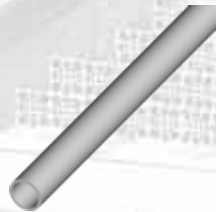
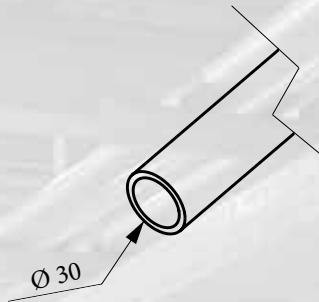
Code
14016

Naziv
Description

Podporna cev Al. Ø30
Round tube Al. Ø30

Descrizione
Beschreibung

Tubo supp. Al Ø30
Stützrohr Al Ø30



Material Aluminij
Material Aluminium
Materiale Aluminio
Material Aluminium

NEW

Round tube Al. Ø30

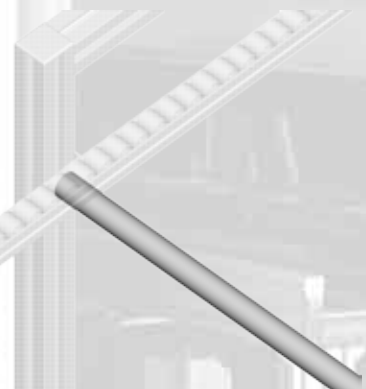
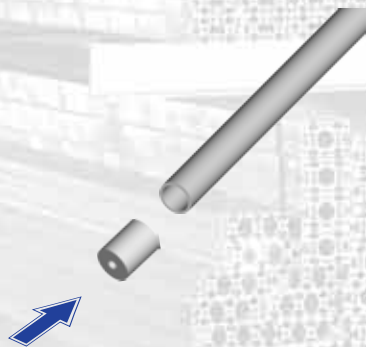
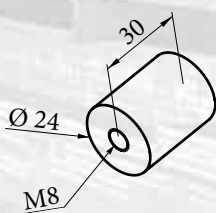
Code
14015

Naziv
Description

Navojni vložek za cev Al Ø30
Threaded insert for tube Al Ø30

Descrizione
Beschreibung

Inserto filettato per tubo Al Ø30
Gewindeinsatz für roh Al Ø30



Material Pocinkano jeklo
Material Zinc steel
Materiale Acciaio zincato
Material Stahl-verzinkt

NEW

Threaded insert M8 for tube Ø30

Code
14019



Roller rails

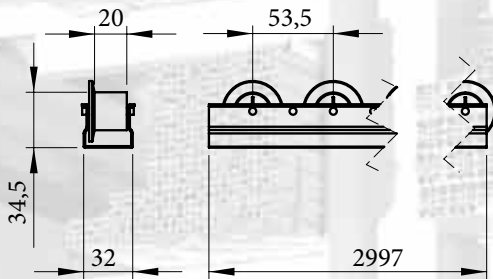
TRANSPORT LINES AND FLEXIBLE CONSTRUCTIONS IN AUTOMATION

Naziv
Description

Valj. proga z bočnim vodenjem
Roller rail Fe with lateral control

Descrizione
Beschreibung

Profilo binario Fe - rotelle con bordini
Rollenschienen Fe ohne Bordscheibe



NEW

Material Pocinkano jeklo /PA
Material Zinc steel /PA
Materiale Acciaio zincato /PA
Material Stahl-verzinkt /PA

Roller rail Fe with lateral control
L-2997mm

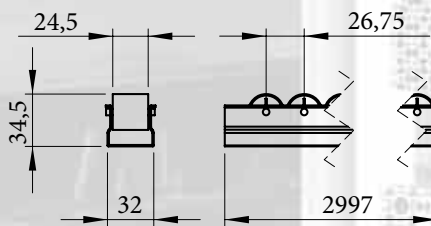
Code
14017

Naziv
Description

Valjčna proga Fe brez vodenja
Roller rail Fe without lateral control

Descrizione
Beschreibung

Profilo binario Fe - rotelle senza bordini
Rollenschienen Fe ohne Bordscheibe



NEW

Roller rail Fe without lateral control
L=2997 mm

Code
14018

Material Pocinkano jeklo /PA
Material Zinc steel /PA
Materiale Acciaio zincato /PA
Material Stahl-verzinkt /PA



NOTES:

A series of horizontal blue lines for taking notes, overlaid on a background image of an industrial roller rail system.



Roller rails

TRANSPORT LINES AND FLEXIBLE CONSTRUCTIONS IN AUTOMATION

NOTES:

Handwritten notes on a background image of roller rail systems. The notes are illegible due to the image's opacity and resolution.



NOTES:

A series of horizontal blue lines for taking notes, overlaid on a background image of industrial roller rail systems.



Roller rails

TRANSPORT LINES AND FLEXIBLE CONSTRUCTIONS IN AUTOMATION

Sk.	Koda	Stran	Sk.	Koda	Stran	Sk.	Koda	Stran	Sk.	Koda	Stran	Sk.	Koda	Stran
Gr.	Code	Page	Gr.	Code	Page	Gr.	Code	Page	Gr.	Code	Page	Gr.	Code	Page
Gr.	Codice	Pagina	Gr.	Codice	Pagina	Gr.	Codice	Pagina	Gr.	Codice	Pagina	Gr.	Codice	Pagina
Gr.	Kode	Seite	Gr.	Kode	Seite	Gr.	Kode	Seite	Gr.	Kode	Seite	Gr.	Kode	Seite
10	10001	10	11	11017	24	11	11054	28	11	11101	36	11	11141	35
10	10002	10	11	11018	24	11	11055	28	11	11102	36	11	11142	37
10	10003	11	11	11019	24	11	11056	28	11	11103	38	11	11143	37
10	10004	11	11	11020	24	11	11057	28	11	11104	38	11	11144	46
10	10005	12	11	11021	24	11	11058	28	11	11105	39	11	11145	43
10	10006	12	11	11022	24	11	11059	28	11	11106	39	11	11146	44
10	10021	13	11	11023	24	11	11060	28	11	11107	40	11	11147	45
10	10007	13	11	11024	24	11	11061	28	11	11108	40	11	11148	45
10	10008	14	11	11025	24	11	11062	29	11	11109	41	11	11149	45
10	10009	14	11	11026	24	11	11063	29	11	11110	41	11	11150	51
10	10010	15	11	11027	25	11	11064	29	11	11111	42	11	11151	52
10	10011	15	11	11028	25	11	11065	29	11	11112	42	11	11152	55
10	10012	16	11	11029	25	11	11066	29	11	11113	43	11	11153	57
10	10013	16	11	11030	25	11	11067	30	11	11114	44	11	11154	57
10	10014	17	11	11031	25	11	11068	30	11	11115	45	11	11155	57
10	10015	18	11	11032	25	11	11069	30	11	11116	46	11	11156	57
10	10016	18	11	11033	25	11	11070	30	11	11117	47	11	11157	47
10	10017	19	11	11034	25	11	11071	30	11	11118	47	11	11158	50
10	10018	19	11	11035	25	11	11072	30	11	11119	48	11	11159	50
10	10019	20	11	11036	26	11	11073	30	11	11120	48	12	12001	62
10	10020	21	11	11037	26	11	11074	30	11	11121	48	12	12002	62
11	11001	24	11	11038	26	11	11075	31	11	11122	49	12	12003	62
11	11002	24	11	11039	26	11	11076	31	11	11123	50	12	12004	62
11	11003	24	11	11040	26	11	11077	31	11	11124	51	12	12005	62
11	11004	24	11	11041	26	11	11078	31	11	11125	52	12	12006	62
11	11005	24	11	11042	26	11	11079	31	11	11126	53	12	12007	62
11	11006	24	11	11043	26	11	11080	31	11	11127	53	12	12008	62
11	11007	24	11	11044	26	11	11081	31	11	11128	54	12	12009	62
11	11008	24	11	11045	26	11	11082	31	11	11129	54	12	12010	62
11	11009	24	11	11046	26	11	11083	32	11	11133	55	12	12011	62
11	11010	24	11	11047	26	11	11094	32	11	11134	55	12	12012	62
11	11011	24	11	11048	26	11	11095	32	11	11135	56	12	12013	62
11	11012	24	11	11049	26	11	11096	32	11	11136	56	12	12014	62
11	11013	24	11	11050	26	11	11097	33	11	11137	49	12	12015	62
11	11014	24	11	11051	26	11	11098	33	11	11138	55	12	12016	63
11	11015	24	11	11052	27	11	11099	34	11	11139	27	12	12017	63
11	11016	24	11	11053	27	11	11100	35	11	11140	34	12	12018	63



Sk.	Koda	Stran	Sk.	Koda	Stran	Sk.	Koda	Stran	Sk.	Koda	Stran
Gr.	Code	Page	Gr.	Code	Page	Gr.	Code	Page	Gr.	Code	Page
Gr.	Codice	Pagina	Gr.	Codice	Pagina	Gr.	Codice	Pagina	Gr.	Codice	Pagina
Gr.	Kode	Seite	Gr.	Kode	Seite	Gr.	Kode	Seite	Gr.	Kode	Seite
12	12019	63	12	12056	75	12	12093	87	14	14001	98
12	12020	65	12	12057	75	12	12094	87	14	14002	98
12	12021	65	12	12058	75	12	12095	88	14	14003	99
12	12022	66	12	12059	75	12	12096	89	14	14004	99
12	12023	66	12	12060	75	12	12097	89	14	14005	98
12	12024	67	12	12061	75	12	12098	90	14	14006	100
12	12025	67	12	12062	75	12	12099	78	14	14007	100
12	12026	68	12	12063	75	12	12100	63	14	14008	101
12	12027	68	12	12064	76	12	12101	63	14	14009	101
12	12028	69	12	12065	76	12	12102	79	14	14010	104
12	12029	69	12	12066	77	12	12103	79	14	14011	104
12	12030	70	12	12067	77	12	12104	79	14	14012	105
12	12031	70	12	12068	78	12	12105	79	14	14013	105
12	12032	71	12	12069	78	12	12106	79	14	14014	106
12	12033	71	12	12070	78	12	12107	79	14	14015	107
12	12034	71	12	12071	78	12	12108	80	14	14016	106
12	12035	72	12	12072	78	12	12110	80	14	14017	108
12	12036	72	12	12073	78	12	12113	81	14	14018	108
12	12037	72	12	12074	78	12	12114	78	14	14019	107
12	12038	72	12	12075	78	12	12115	64			
12	12039	72	12	12076	81	12	12116	64			
12	12040	72	12	12077	81	12	12117	78			
12	12041	73	12	12078	81	12	12118	79			
12	12042	73	12	12079	82	12	12119	79			
12	12043	73	12	12080	82	12	12120	79			
12	12044	73	12	12081	83	12	12121	79			
12	12045	73	12	12082	83	12	12122	81			
12	12046	73	12	12083	84	12	12123	81			
12	12047	74	12	12084	85	12	12124	62			
12	12048	74	12	12085	85	12	12125	85			
12	12049	74	12	12086	85	12	12126	85			
12	12050	74	12	12087	85	12	13001	90			
12	12051	74	12	12088	86	12	13002	90			
12	12052	74	12	12089	86	12	13003	90			
12	12053	74	12	12090	87	12	13004	90			
12	12054	74	12	12091	87	12	13005	91			
12	12055	74	12	12092	87	12	13006	91			





