

CONVEYORS

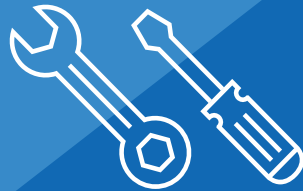


**DESIGN
ASSISTANCE**



**TURNING IDEAS
INTO PRODUCTS**

**GUARANTEE
AND SERVICE**



**Fast and quality
customer service**

**S I N C E
1998**

CONVEYORS

In its catalogue, LIPRO presents a range of TB conveyors with standard belts (henceforth: standard conveyors) which are mainly intended for small and medium loads. The range of standard conveyors is complemented by special (purpose) versions.

They are designed and manufactured in accordance with the wishes and requirements of customers. The frames of all our standard conveyor versions are composed of aluminium profiles and accessories that are presented in greater detail in our **Modular System** catalogue,

belts (smooth PVC or polyurethane – resistant against oil – cuts, etc.), drive and PTO rollers, bearing brackets with flange, bearings, stainless steel tracks and electric motors with a reducer in a direct, indirect or central version.

The standard equipment does not contain the support frame. At the request of the customer we can manufacture and/or install it on the conveyor.

The standard handover consists of an assembled and appropriately packed conveyor, equipped with technical documentation and instructions for use.

Self-builders of conveyors have at their disposal all the necessary components.



PRESENTATION OF LIPRO

The LIPRO system solutions offer added value and enable high productivity, flexibility and optimisation of working processes.



LIPRO was established in 1998 and since then it has been present on the Slovenian, European and global markets. A quality support to our esteemed business partners enabled LIPRO to develop into a recognisable and well-organised production automation company.

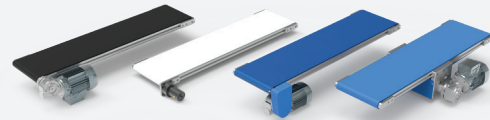
CEO
Albert Pribat, Eng.





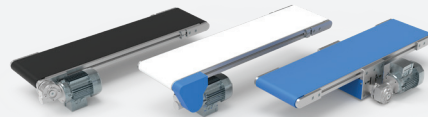
INDEX

TB30



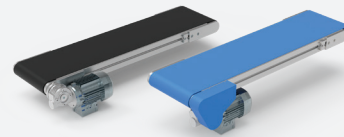
7 – 23

TB45



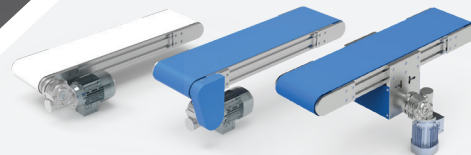
25 – 37

TB60



39 – 47

TB90



49 – 57

TBS

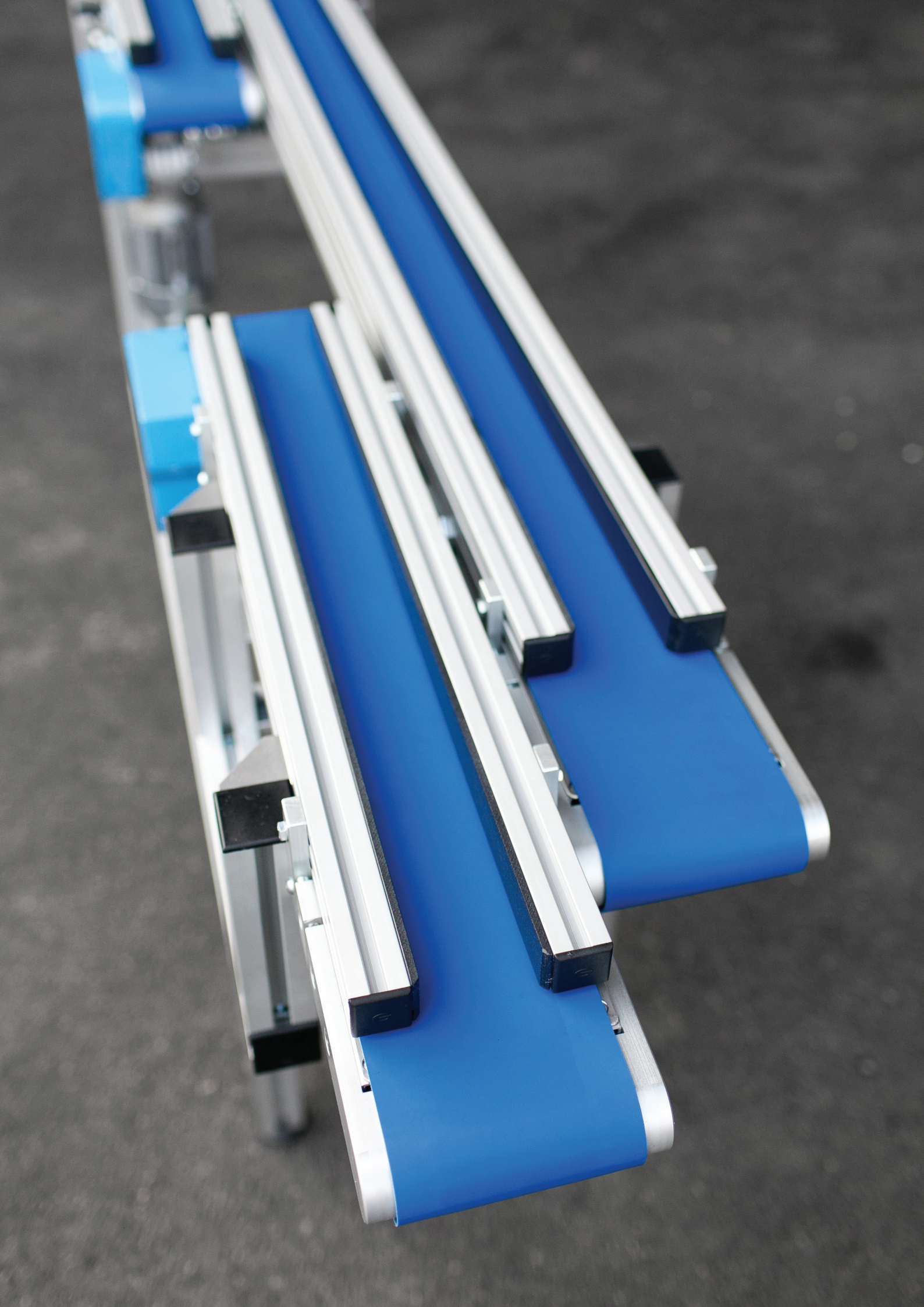


59 – 65

ACCESSORIES

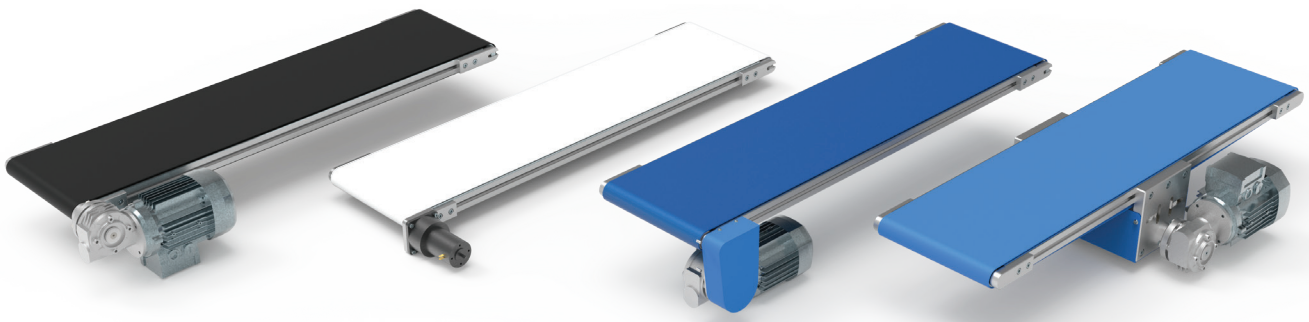


67 – 68



CONVEYOR

TB30



TB30D380

TB30D24

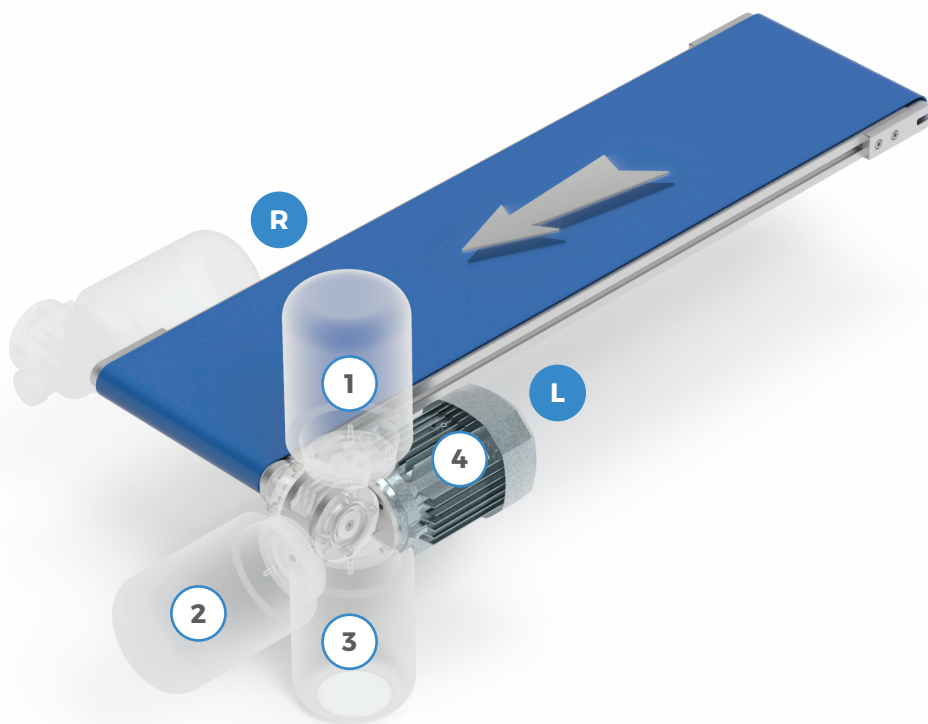
TB30i

TB30C

Type TB30 conveyors are intended for loads where the total load weight on the conveyor does not exceed 60 kg. The selection of the conveyor type depends on many parameters (length, width, type of load, etc.), we therefore recommend that you consult with our technical service.

TB30D380

Direct drive



Code

EXAMPLE OF ORDERING

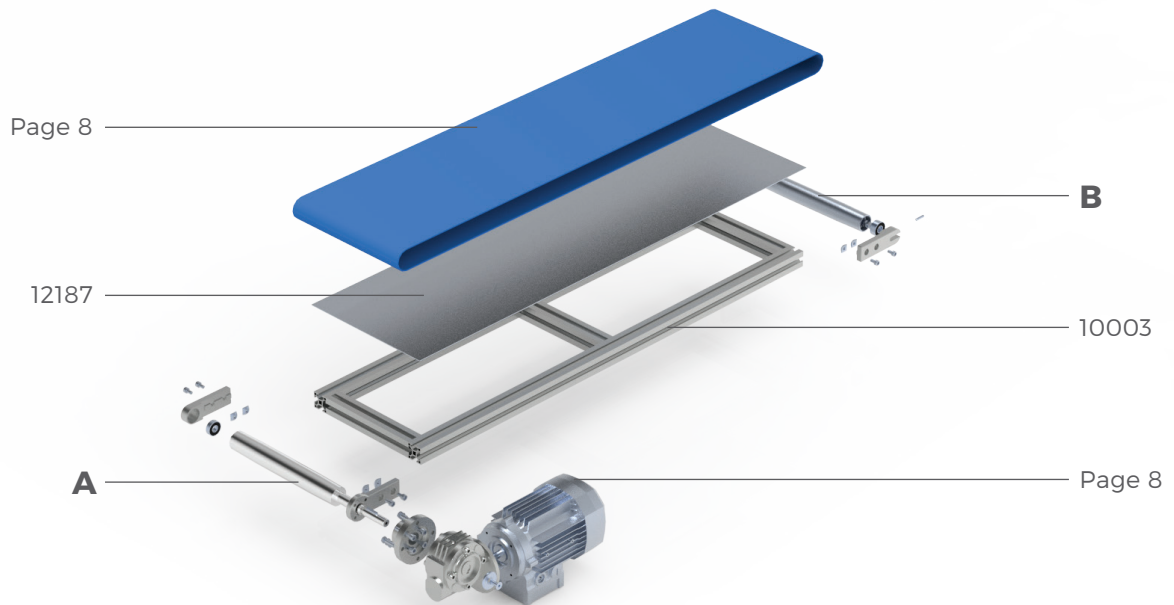
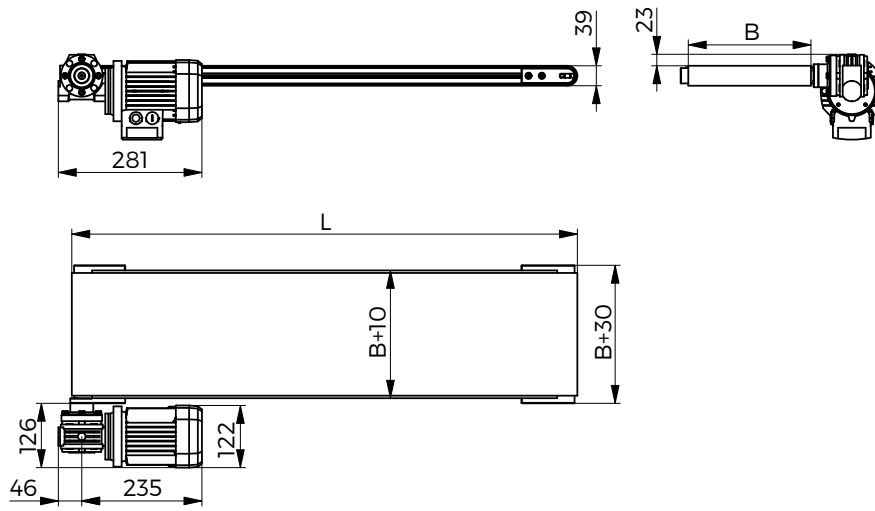
TB30D380	-	1500	-	L	-	300	-	P	-	1	-	15	-	1.9
1		2		3		4		5		6		7		8

1	Conveyor type	TB30D380
2	Length	L = min. 300 mm - max. 2000 mm
3	Drive side	R = right L = left
4	Belt width	B = min. 25 mm; 50 mm - max. 300 mm
5	Belt type	P = PVC A = polyurethane S = special
6	Motor with reducer - orientation	1 - 2 - 3 - 4
7	Side panels	min. 12 mm - max. 40 mm N = no, S = special
8	Speed	min. 2,1 m/min - max. 20,7 m/min

MOTOR	REDUCER	kW	(m/min)											
BN56 B4	B14 VF30/P i = 70	0.09	2,1											
BN63 B4	B14 VF30/P i = 60; i = 40; i = 30; i = 20; i = 15; i = 10; i = 7	0.18		2,4	3,6	4,8	7,3	9,7	14,5	20,7				

TB30D380

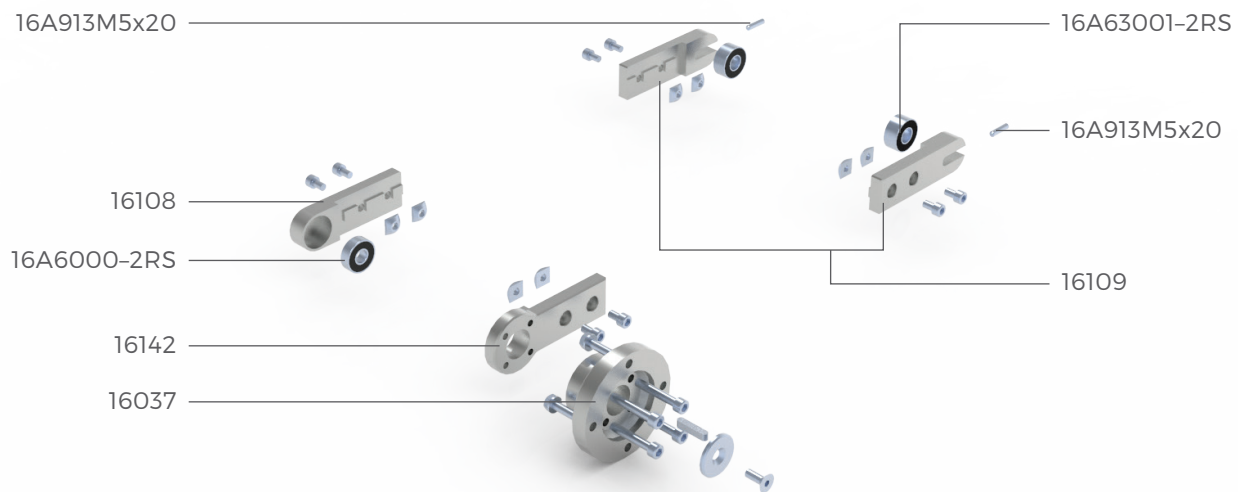
Components



		Pieces
Page 8	Motor with reducer	1
Page 8	Belt	1
12187	Stainless steel sheet 1.5 mm	1
10003	Al. frame 30 x 30	set
A	Drive roller	1
	Steel roller Ø35 mm	1
B	PTO roller	1
	Al.roller Ø35 mm	1
	Steel axle	1

TB30D380

KIT - Assembly



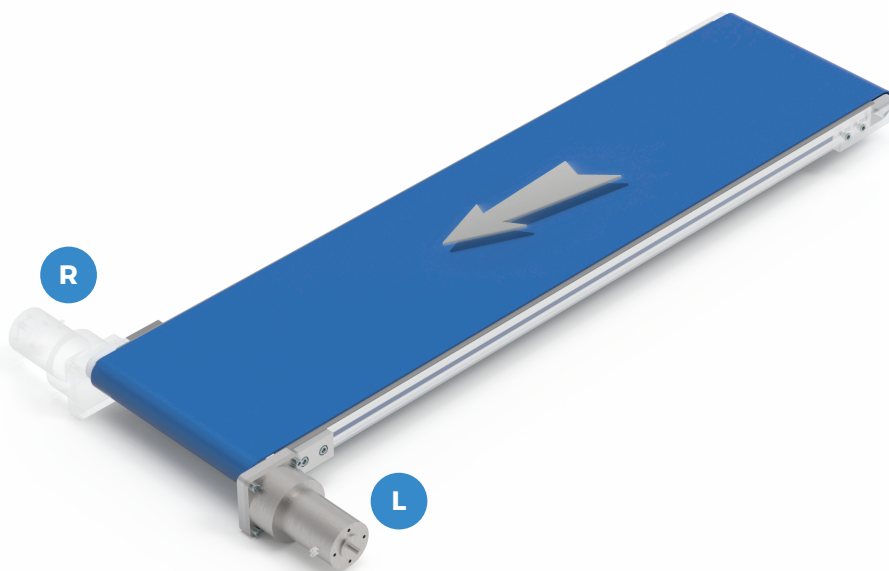
Code 15TB30D380

			Pieces
16108	Bearing plate		1
16109	Tensioning plate		2
16037	Flange		1
16142	Reducer plate		1
16A913M5x20	Locking screw		2
16A6000-2RS	Bearing		1
16A63001-2RS	Bearing		2
	Fastening material		set



TB30D24

Direct drive



Code

EXAMPLE OF ORDERING

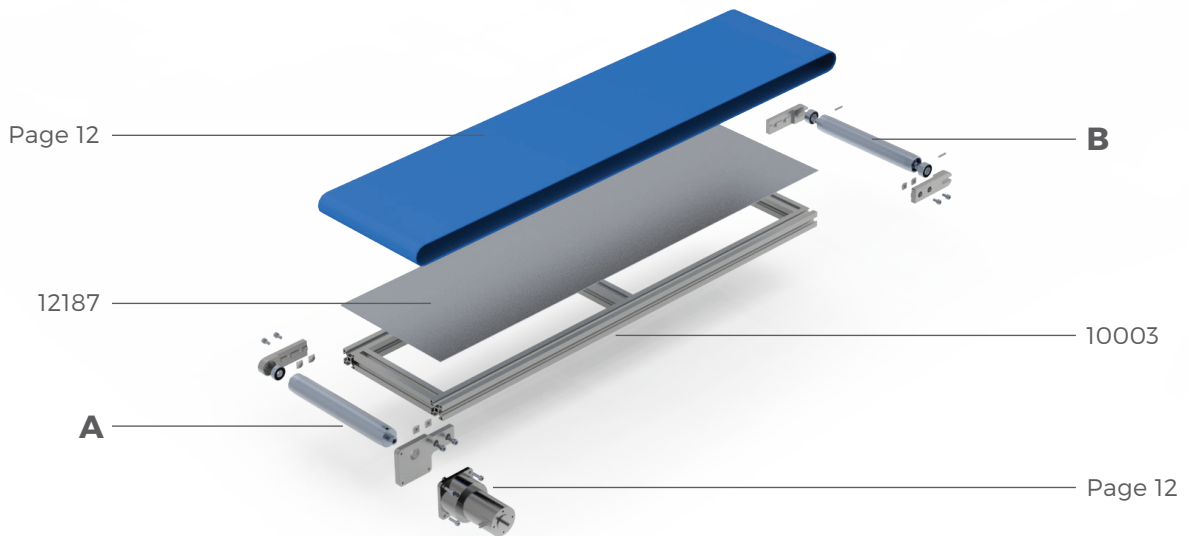
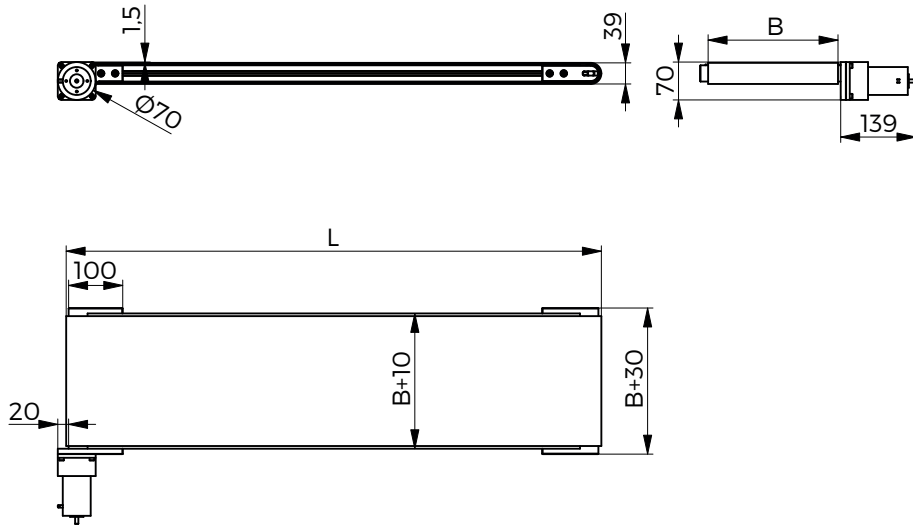
TB30D324	-	1500	-	L	-	300	-	P	-	/	-	15	-	0.44
1		2		3		4		5		6		7		8

1	Conveyor type	TB30D24
2	Length	L = min. 300 mm - max. 1500 mm
3	Drive side	R = Right L = Left
4	Belt width	B = min. 25 mm; 50 mm - max. 300 mm
5	Belt type	P = PVC A = polyurethane S = special
6	Motor with reducer - orientation	-
7	Side panels	min. 12 mm - max. 40 mm N = no, S = special
8	Speed	min. 0,44 m/min - max. 10,1 m/min

MOTOR REDUCER	TYPE	V	(m/min)					
Bühler 1.61.050	469; 468; 467; 466; 465; 464	24	0,44	0,79	1,5	2,6	5,3	10,1

TB30D24

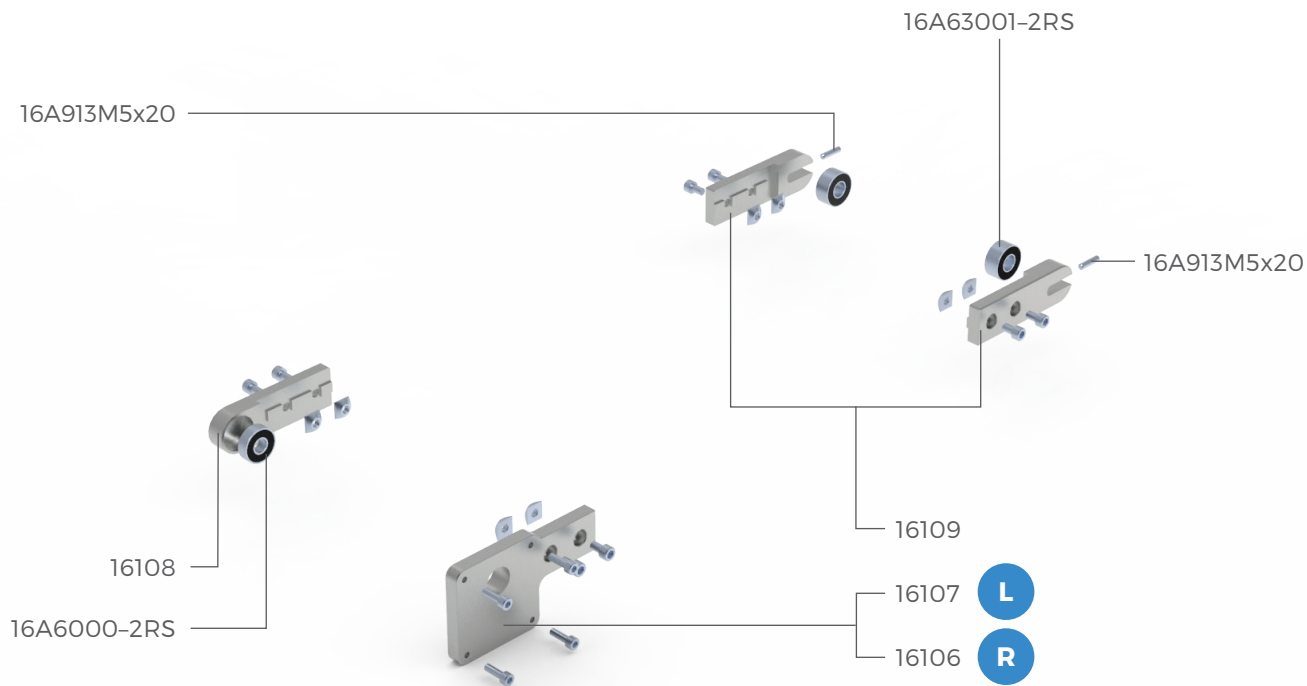
Components



		Pieces
Page 12	Motor 24V	1
Page 12	Belt	1
12187	Stainless steel sheet 1.5 mm	1
10003	Al. frame 30 x 30	set
A	Drive roller	1
	Steel roller Ø35 mm	1
B	PTO roller	1
	Steel roller Ø35 mm	1
	Steel axle	1

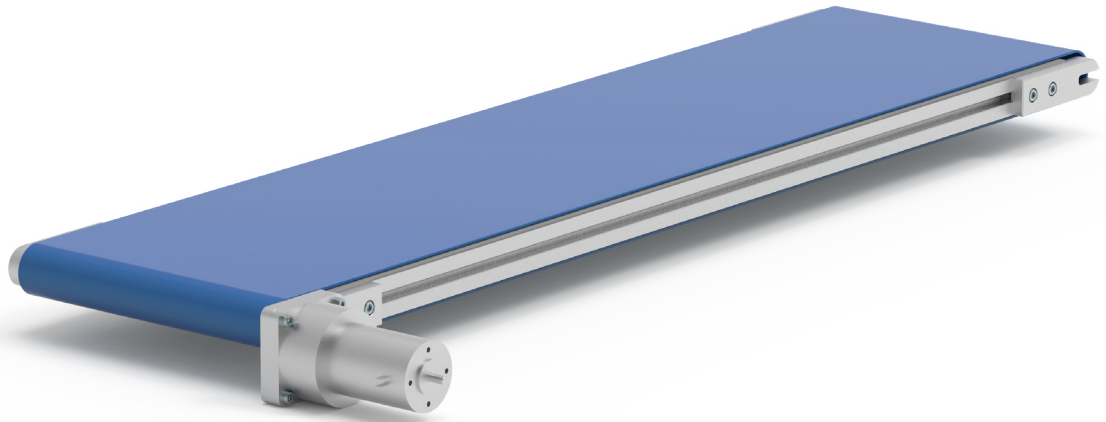
TB30D24

KIT - Assembly



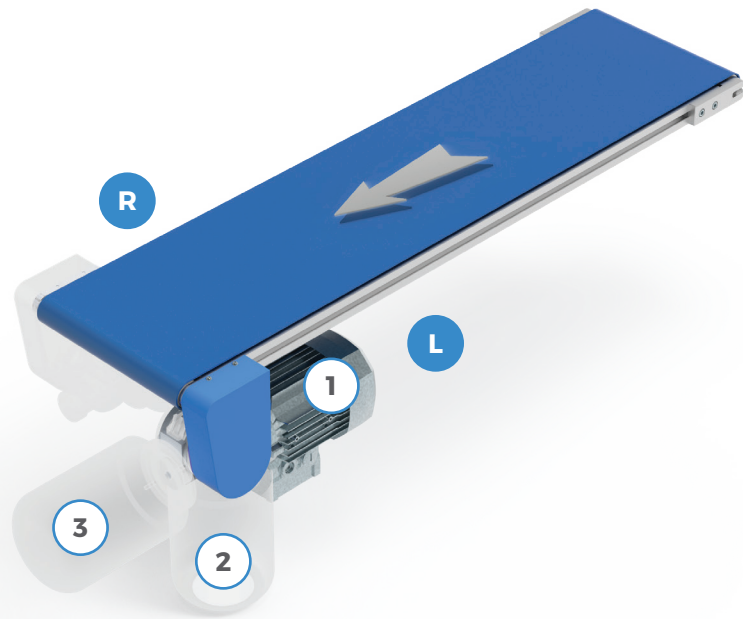
Code 15TB30D24-L/R

			Pieces
16106	Motor plate R		1
16107	Motor plate L		1
16108	Bearing plate		1
16109	Tensioning plate		2
16A913M5x20	Locking screw		2
16A6000-2RS	Bearing		1
16A63001-2RS	Bearing		2
	Fastening material		set



TB30i

Indirect drive



Code

EXAMPLE OF ORDERING

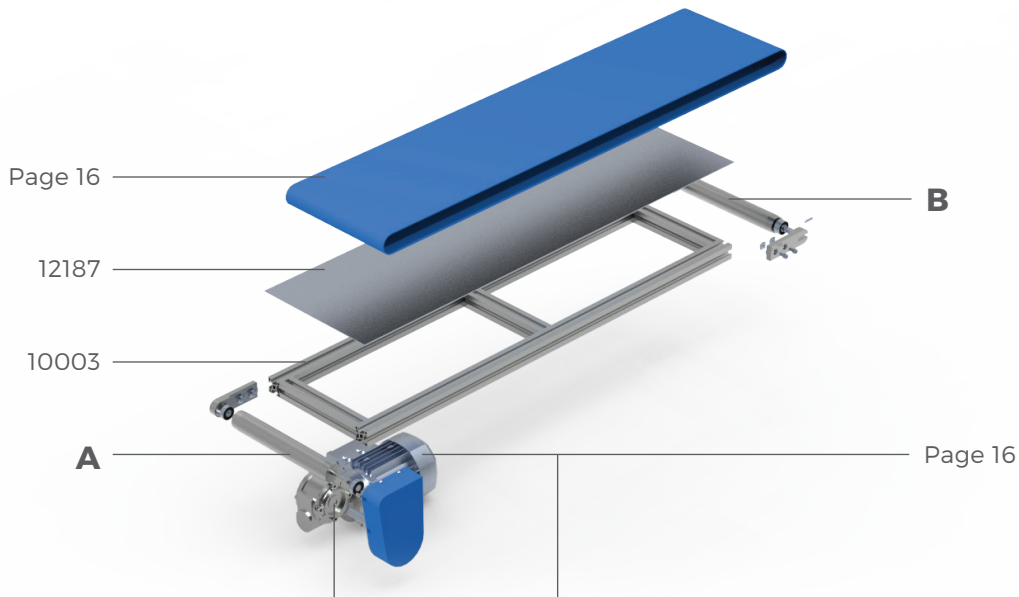
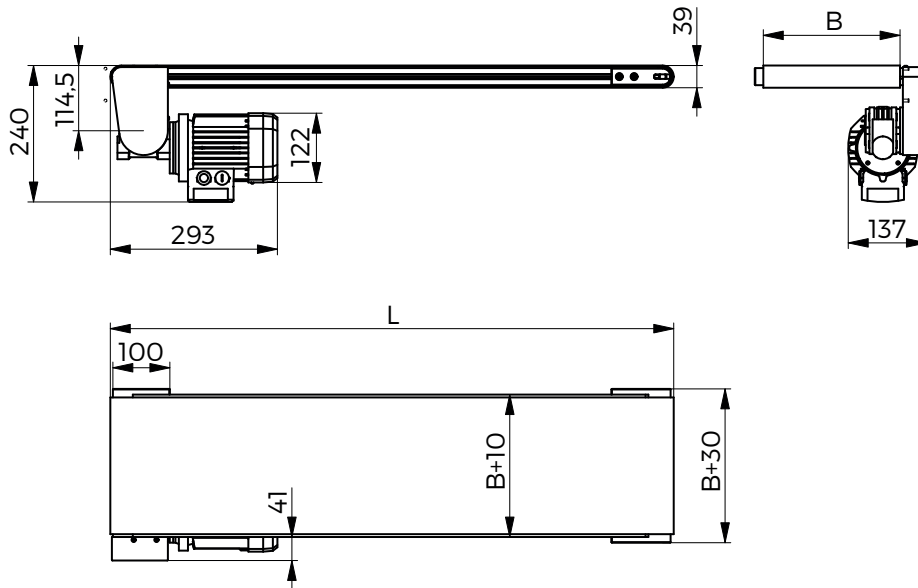
TB30i	-	1500	-	L	-	300	-	P	-	1	-	15	-	1.9
1		2		3		4		5		6		7		8

1	Conveyor type	TB30i
2	Length	L = min. 300 mm - max. 2000 mm
3	Drive side	R = right L = left
4	Belt width	B = min. 25 mm; 50 mm - max. 300 mm
5	Belt type	P = PVC A = polyurethane S = special
6	Motor with reducer - orientation	1 - 2 - 3
7	Side panels	min. 12 mm - max. 40 mm N = no, S = special
8	Speed	min. 2,1 m/min - max. 20,7 m/min

MOTOR	REDUCER	kW	(m/min)											
BN56 B4	B14 VF30/P i = 70	0.09	2,1											
BN63 B4	B14 VF30/P i = 60; i = 40; i = 30; i = 20; i = 15; i = 10; i = 7	0.18		2,4	3,6	4,8	7,3	9,7	14,5	20,7				

TB30i

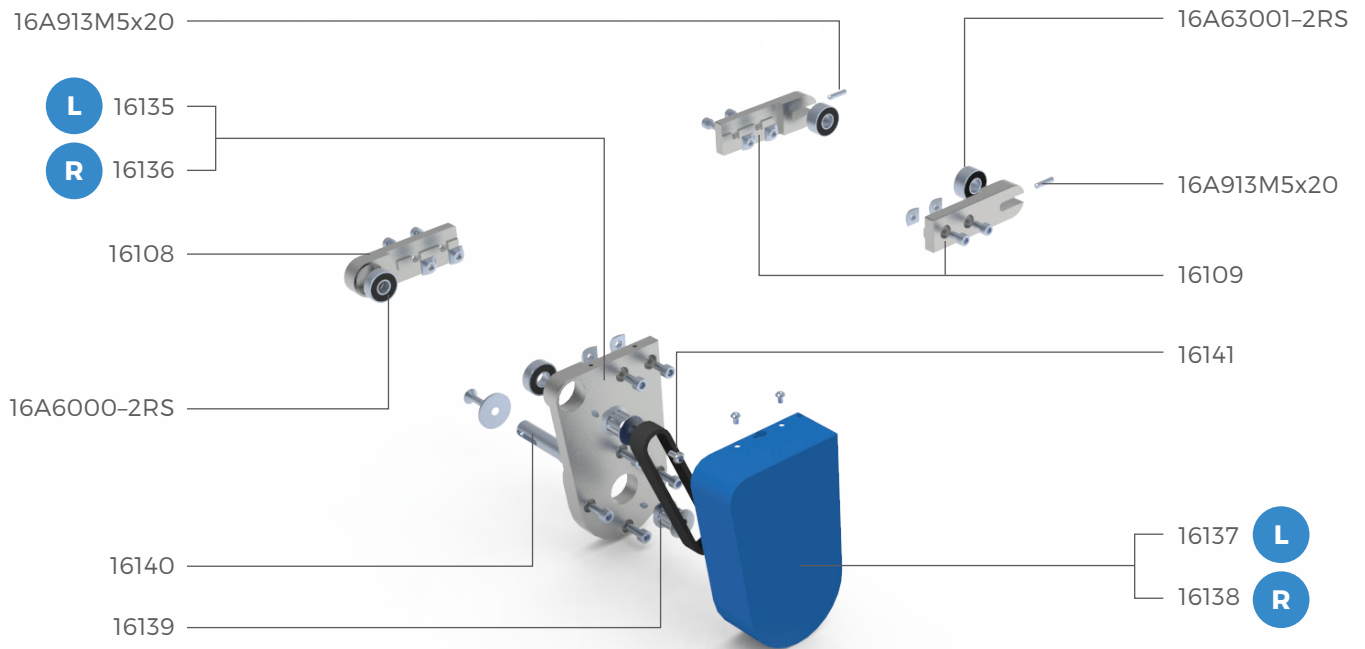
Components



		Pieces
Page 16	Motor with reducer	1
Page 16	Belt	1
12187	Stainless steel sheet 1.5 mm	1
10003	Al. frame 30 x 30	set
A	Drive roller	1
	Steel roller Ø35 mm	1
B	PTO roller	1
	Steel roller Ø35 mm	1
	Steel axle	1

TB30i

KIT - Assembly



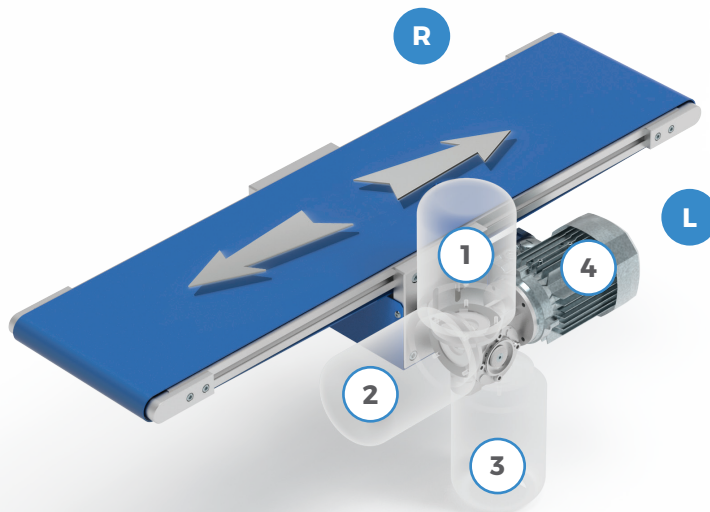
Code 15TB30i-L/R

			Pieces
16108	Bearing plate		1
16109	Tensioning panel		2
16135	Reducer plate L		1
16136	Reducer plate R		1
16137	Protection cover L		1
16138	Protection cover R		1
16139	Pulley		2
16140	Reducer shaft		1
16141	Timing belt HTD		1
16A913M5x20	Locking screw		2
16A6000-2RS	Bearing		2
16A63001-2RS	Bearing		2
	Fastening material		set



TB30C

Central drive



Code

EXAMPLE OF ORDERING

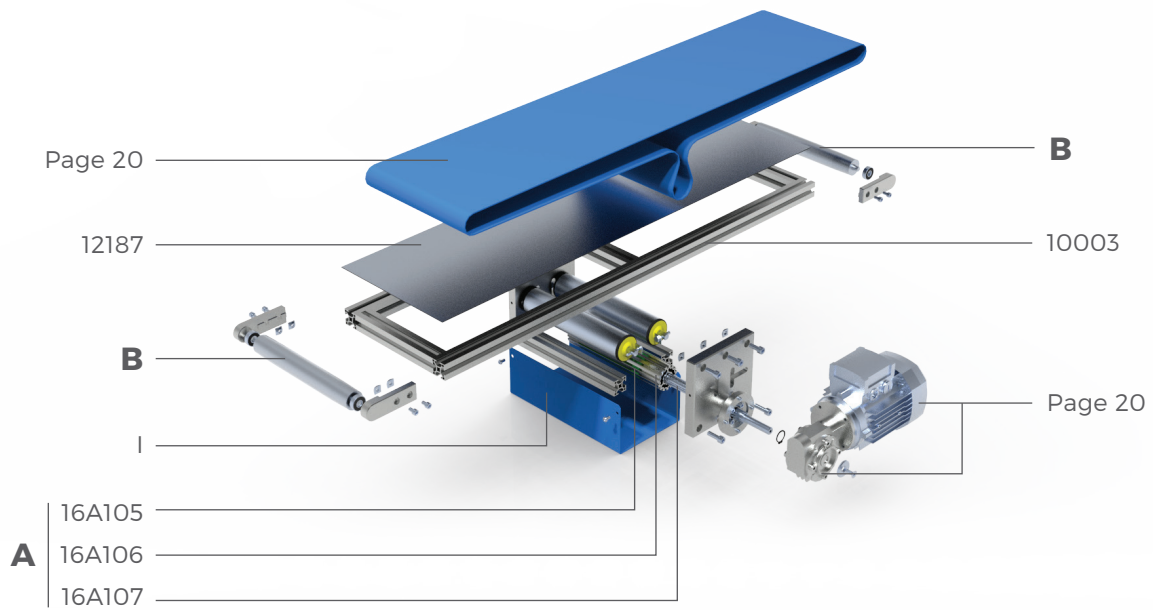
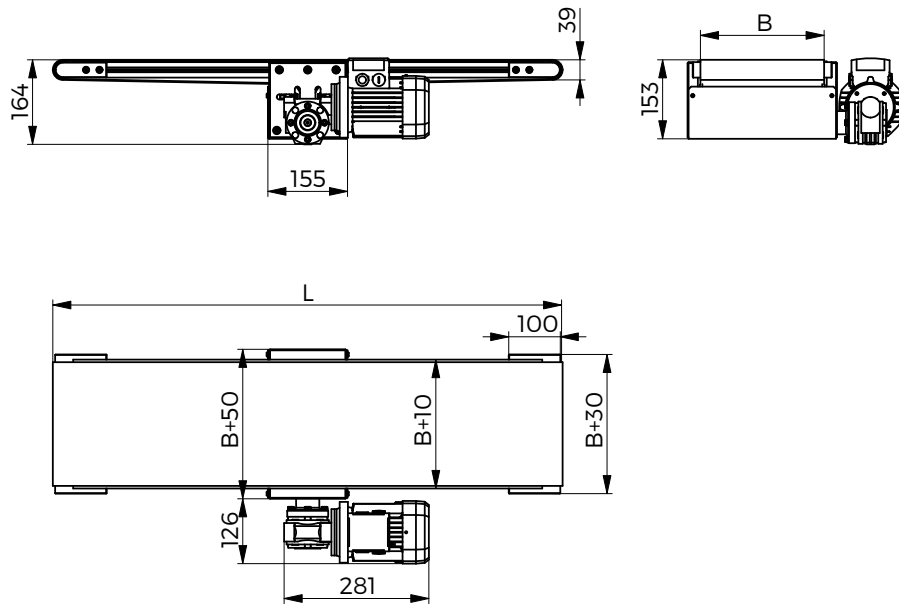
TB30C	-	1500	-	L	-	300	-	P	-	1	-	15	-	3
1		2		3		4		5		6		7		8

1	Conveyor type	TB30C
2	Length	L = min. 300 mm - max. 2000 mm
3	Drive side	R = right L = left
4	Belt width	B = min. 25 mm; 50 mm - max. 500 mm
5	Belt type	P = PVC A = polyurethane S = special
6	Motor with reducer - orientation	1 - 2 - 3 - 4
7	Side panels	min. 12 mm - max. 40 mm N = no, S = special
8	Speed	min. 2,1 m/min - max. 20,7 m/min

MOTOR	REDUCER	kW	(m/min)											
BN56 B4	B14 VF30/P i = 70	0.09	2,1											
BN63 B4	B14 VF30/P i = 60; i = 40; i = 30; i = 20; i = 15; i = 10; i = 7	0.18		2,4	3,6	4,8	7,3	9,7	14,5	20,7				

TB30C

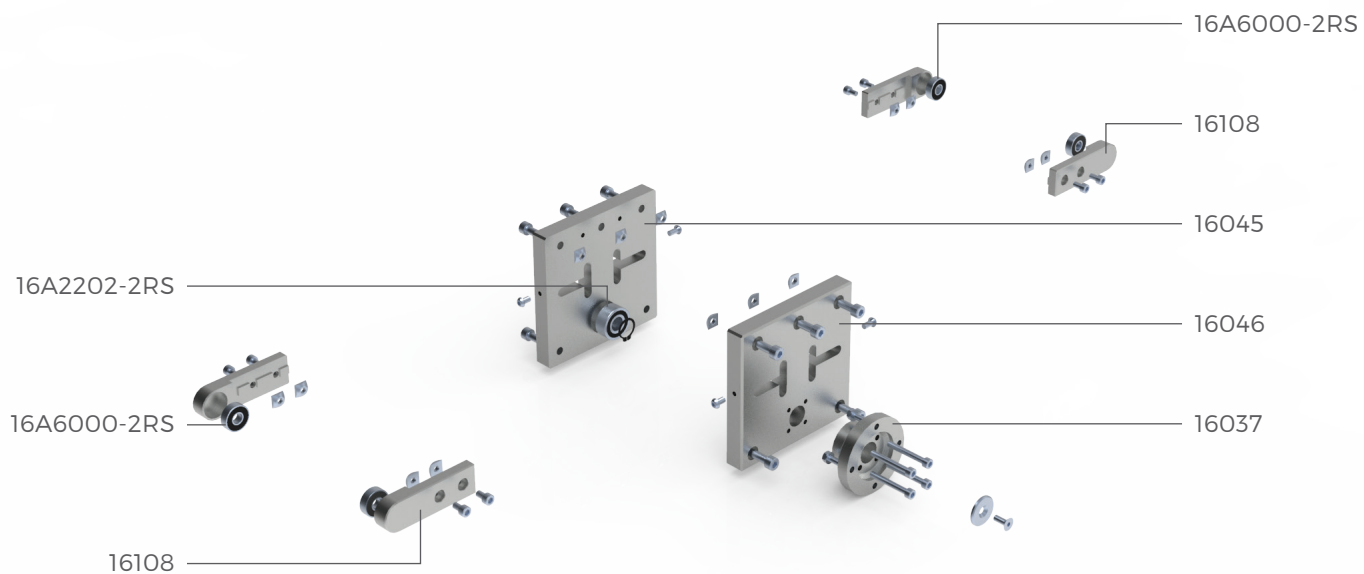
Components



		Pieces
Page 20	Motor with reducer	1
Page 20	Belt	1
12187	Stainless steel sheet 1.5 mm	1
10003	Al. frame 30 x 30	1
I	Protection cover	set
A	Drive roller	1
16A105	Roller rubber band $\varnothing 5$ mm	15
16A106	Steel roller $\varnothing 48.5$ mm	1
16A107	Spline shaft 16AS	1
B	PTO roller	1
	Steel roller $\varnothing 35$ mm	2

TB30C

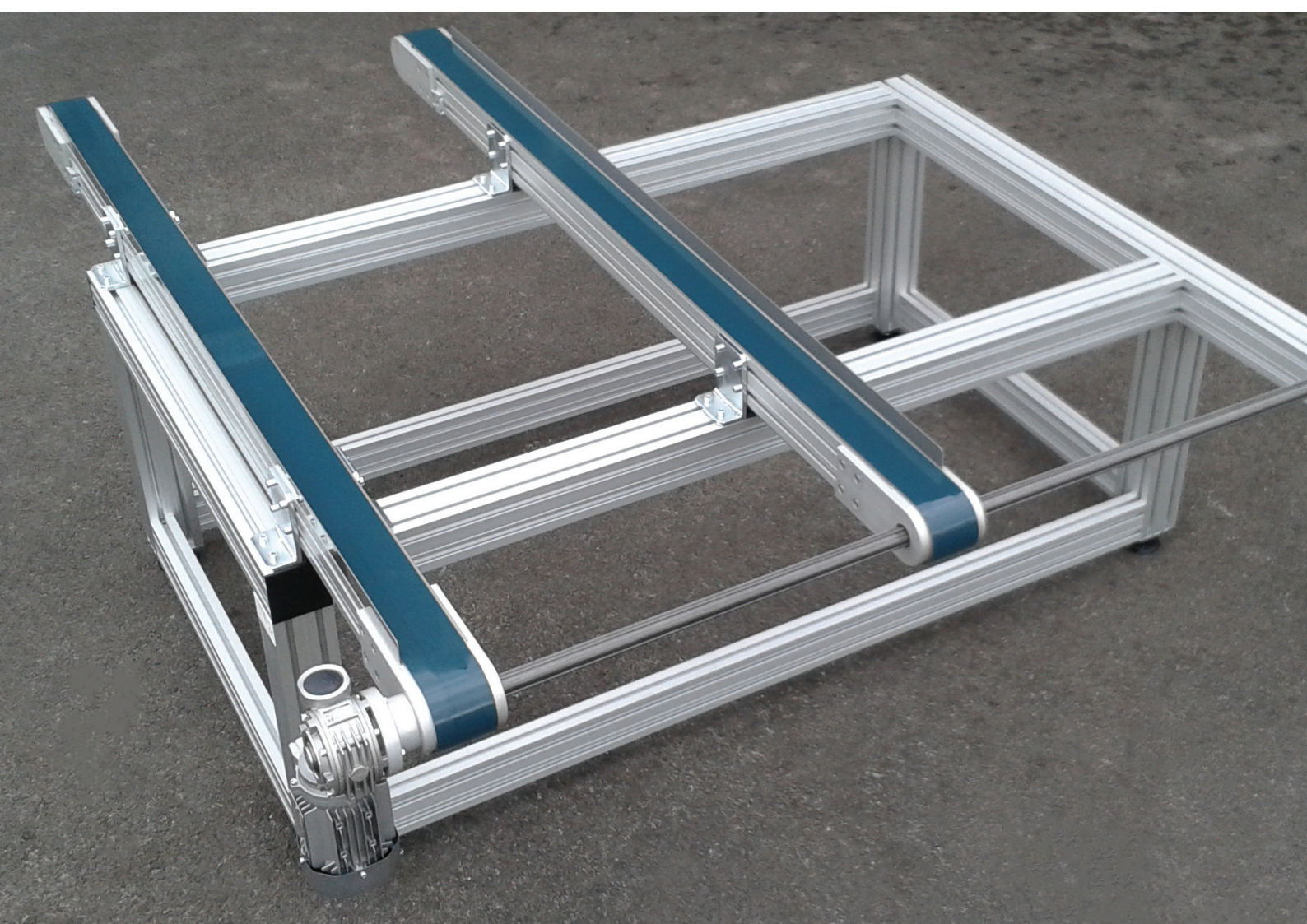
KIT - Assembly



Code 15TB30C

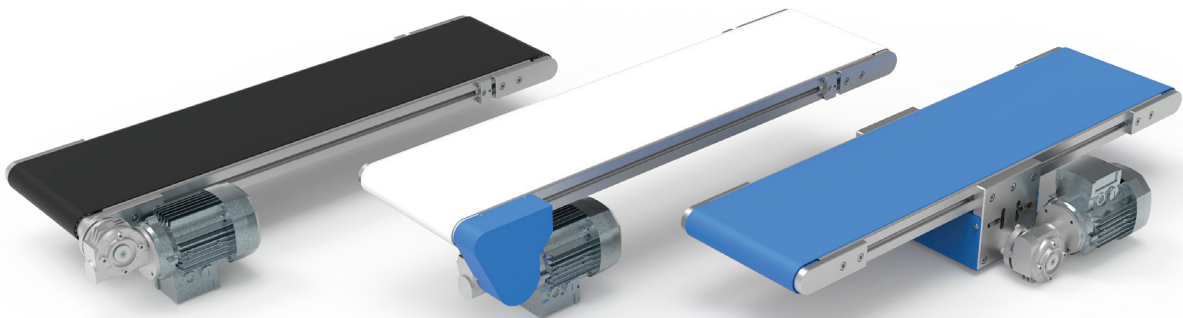
			Pieces
16108	Bearing plate		4
16037	Flange		1
16045	Drive plate		1
16046	Reducer plate		1
16A6000-2RS	Bearing		4
16A2202-2RS	Bearing		1
	Fastening material		set





CONVEYOR

TB45



TB45D

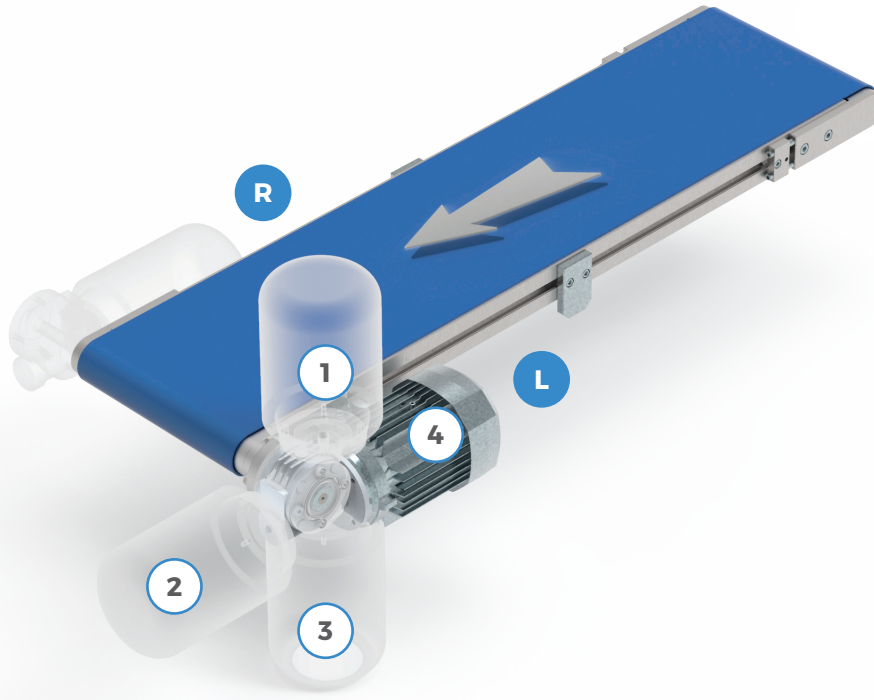
TB45i

TB45C

Type TB45 conveyors are intended for loads where the total load weight on the conveyor does not exceed 90 kg. The selection of the conveyor type depends on many parameters (length, width, type of load, etc.), we therefore recommend that you consult with our technical service.

TB45D

Direct drive



Code

EXAMPLE OF ORDERING

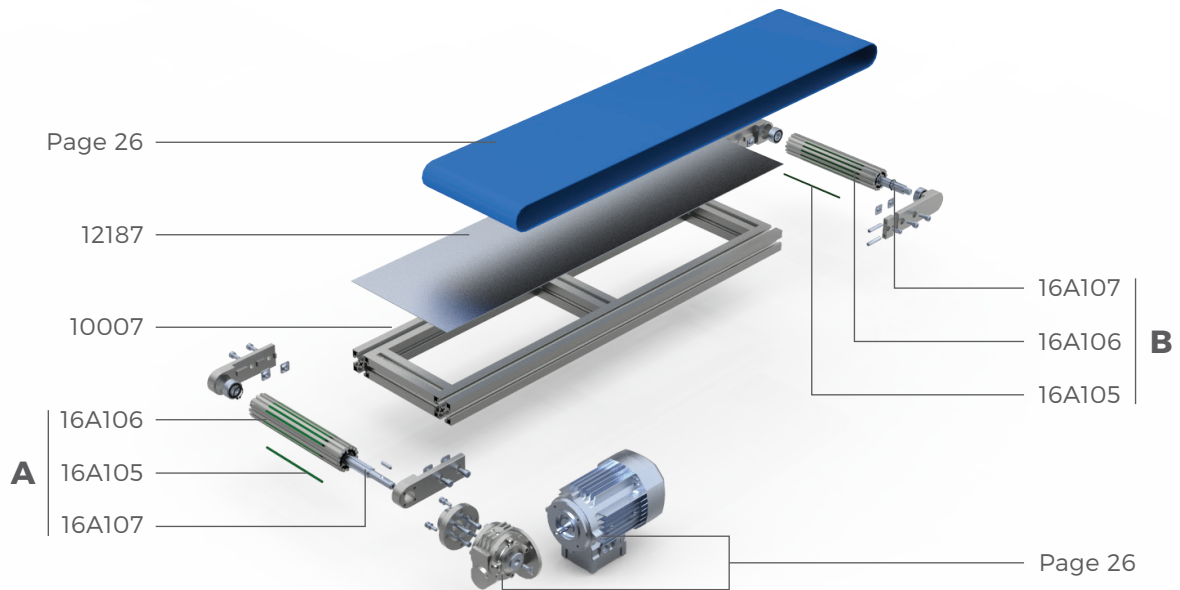
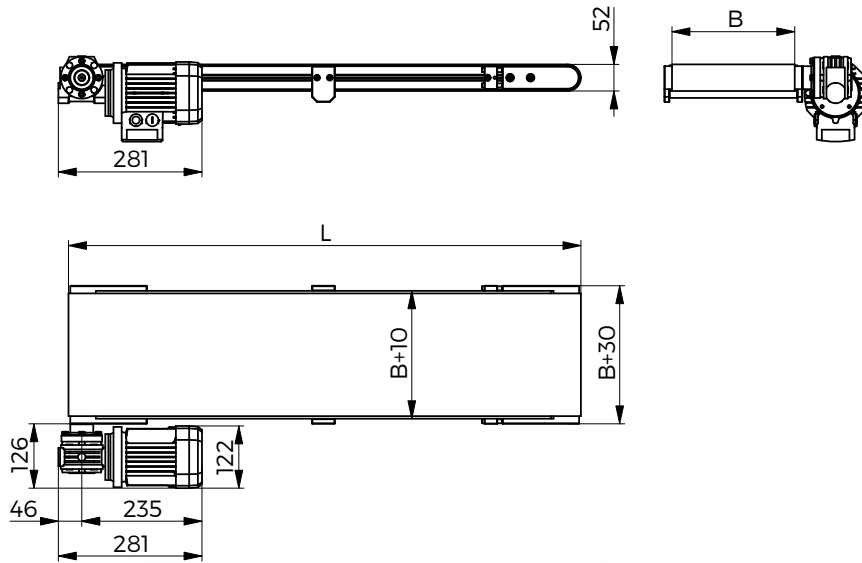
TB45D	-	1500	-	L	-	300	-	P	-	1	-	15	-	3
1		2		3		4		5		6		7		8

1	Conveyor type	TB45D
2	Length	L = min. 400 mm - max. 6000 mm
3	Drive direction	R = right L = left
4	Belt width	B = min. 35 mm; 50 mm; 80 mm - max. 600 mm
5	Belt type	P = PVC A = polyurethane S = special
6	Motor with reducer - orientation	1 - 2 - 3 - 4
7	Side panels	min. 12 mm - max. 40 mm N = no, S = special
8	Speed	min. 2,9 m/min - max. 28,7 m/min

MOTOR	REDUCER	kW	(m/min)											
BN56 B4	B14 VF30/P i = 70	0.09	2,9											
BN63 B4	B14 VF30/P i = 60; i = 40; i = 30; i = 20; i = 15; i = 10; i = 7	0.18		3,3	5	6,7	10	13,4	20	28,7				

TB45D

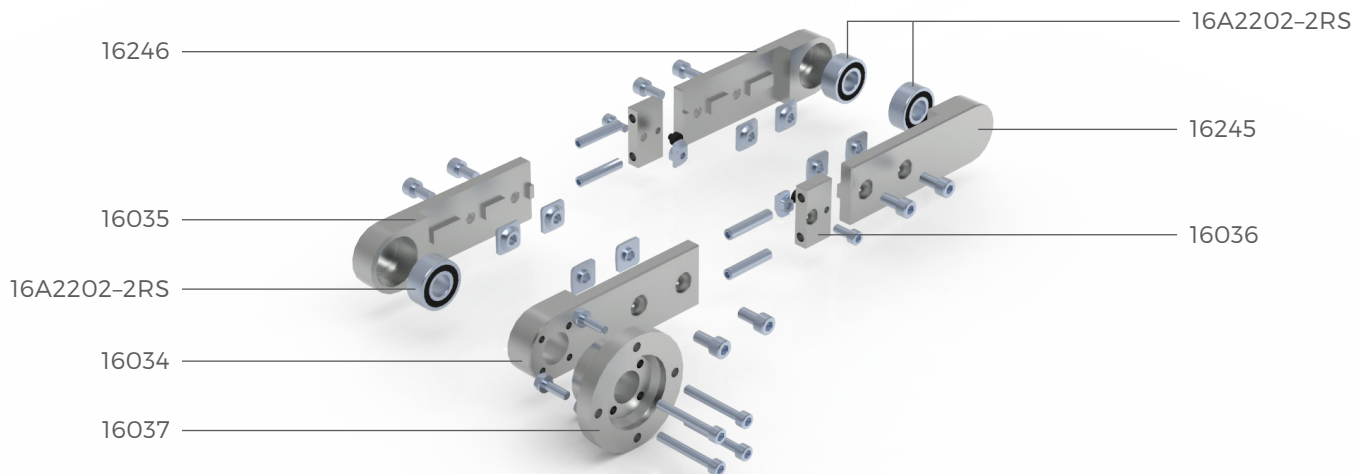
Components



		Pieces
Page 26	Motor with reducer	1
Page 26	Belt	1
12187	Stainless steel sheet 1.5 mm	1
10007	Al. frame 45 x 45 L	set
A	Drive roller	1
16A105	Roller rubber band Ø5 mm	15
16A106	Al.roller Ø48.5 mm	1
16A107	Spline shaft 16AS	1
B	PTO roller	1
16A105	Roller rubber band Ø5 mm	15
16A106	Al.roller Ø48.5 mm	1
16A107	Spline axle 16AS	1

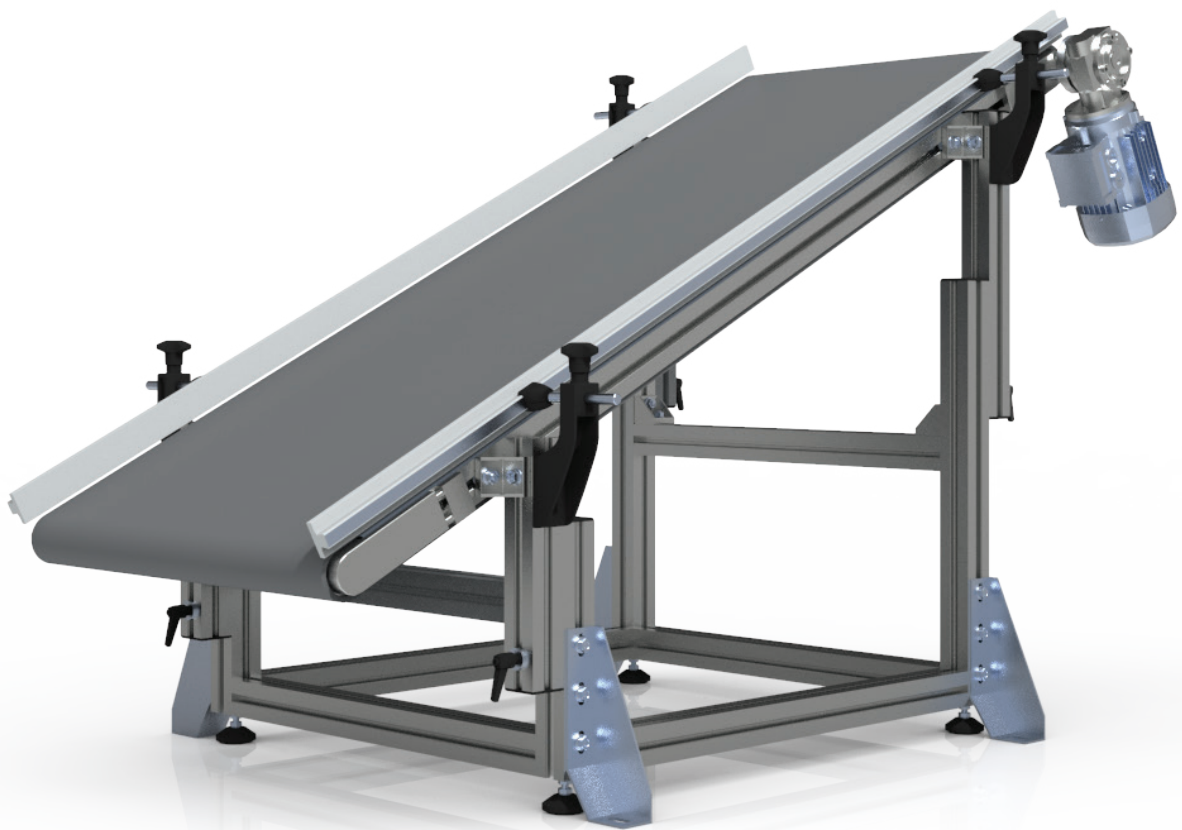
TB45D

KIT - Assembly



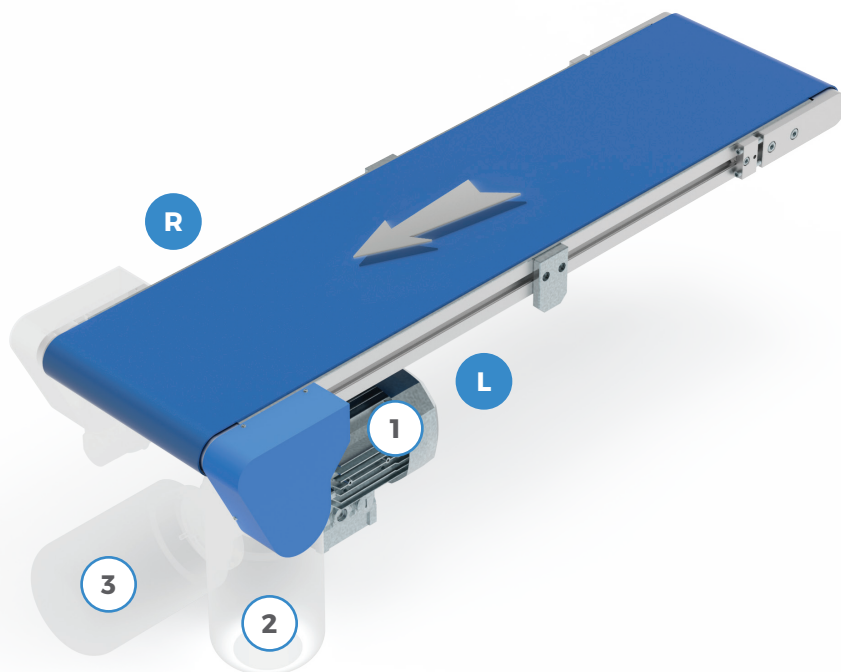
Code 15TB45D

		Pieces
16034	Reducer plate	1
16035	Bearing plate	1
16036	Tensioner	2
16037	Flange	1
16245	Bearing plate L	1
16246	Bearing plate R	1
16A2202-2RS	Bearing	3
	Fastening material	set



TB45i

Indirect drive



Code

EXAMPLE OF ORDERING

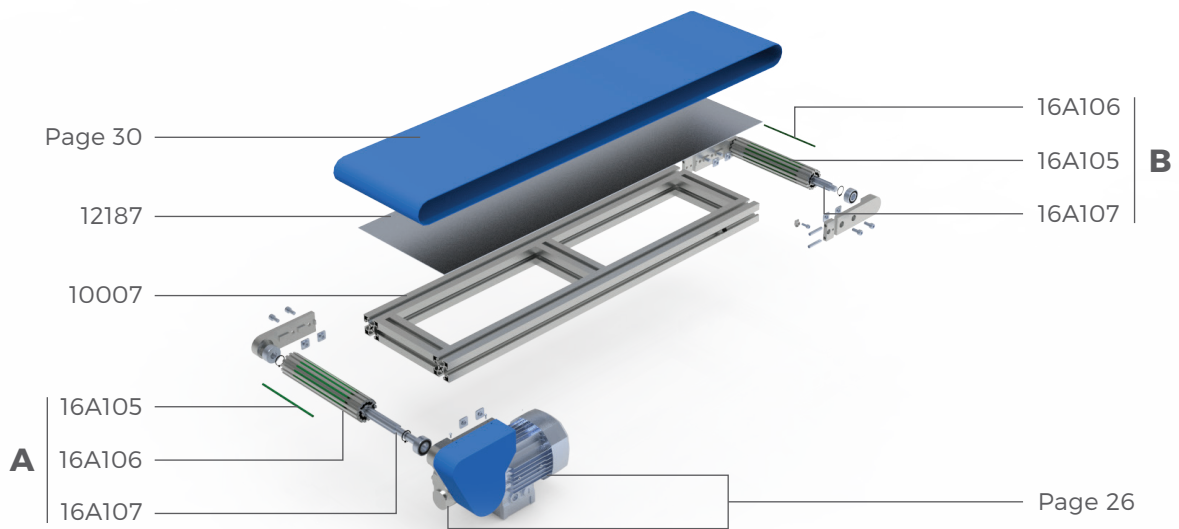
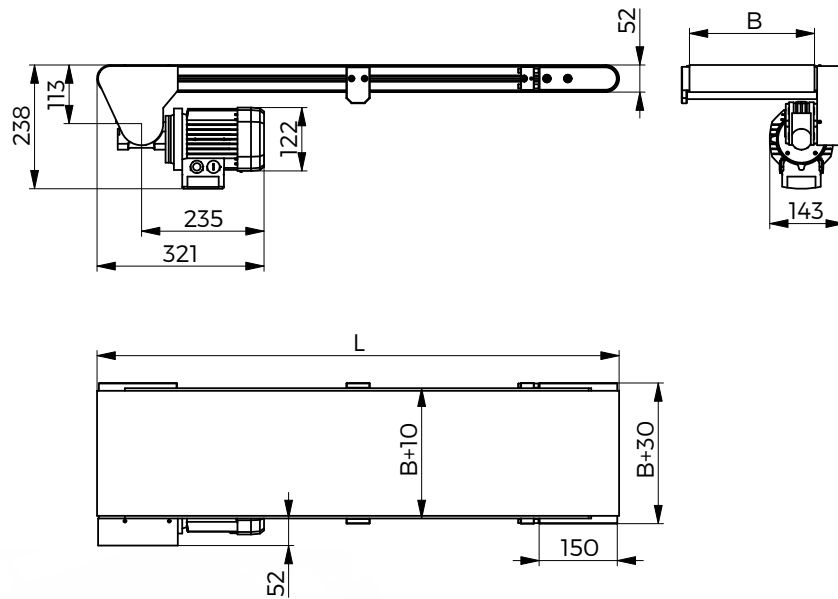
TB45i	-	1500	-	L	-	300	-	P	-	1	-	15	-	3
1		2		3		4		5		6		7		8

1	Conveyor type	TB45i
2	Length	L = min. 400 mm - max. 6000 mm
3	Drive side	R = right L = left
4	Belt width	B = min. 35 mm; 50 mm; 80 mm - max. 600 mm
5	Belt type	P = PVC A = polyurethane S = special
6	Motor with reducer - orientation	1 - 2 - 3
7	Side panels	min. 12 mm - max. 40 mm N = no, S = special
8	Speed	min. 2,9 m/min - max. 28,7 m/min

MOTOR	REDUCER	kW	(m/min)											
BN56 B4	B14 VF30/P i = 70	0.09	2,9											
BN63 B4	B14 VF30/P i = 60; i = 40; i = 30; i = 20; i = 15; i = 10; i = 7	0.18		3,3	5	6,7	10	13,4	20	28,7				

TB45i

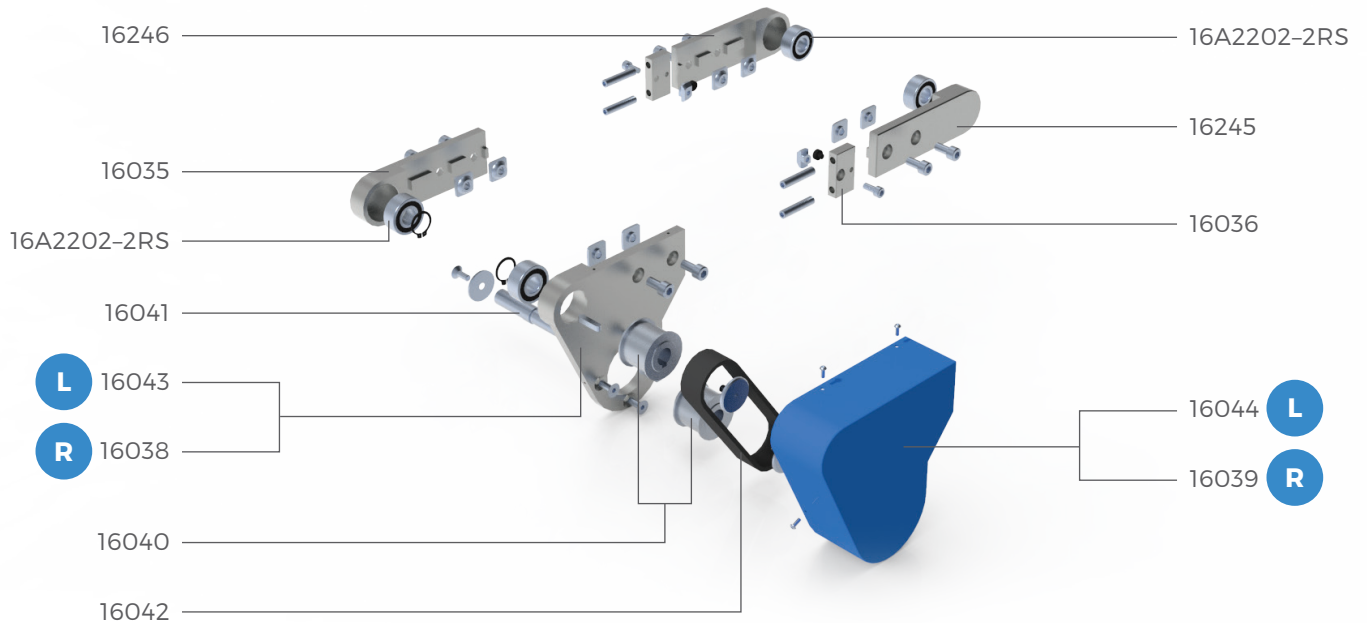
Components



		Pieces
Page 30	Motor with reducer	1
Page 30	Belt	1
12187	Stainless steel sheet 1.5 mm	1
10007	Al. frame 45 x 45 L	set
A	Drive roller	1
16A105	Roller rubber band Ø5 mm	15
16A106	Al.roller Ø48.5 mm	1
16A107	Spline shaft 16AS	1
B	PTO roller	1
16A105	Roller rubber band Ø5 mm	15
16A106	Al.roller Ø48.5 mm	1
16A107	Spline axle 16AS	1

TB45i

KIT - Assembly



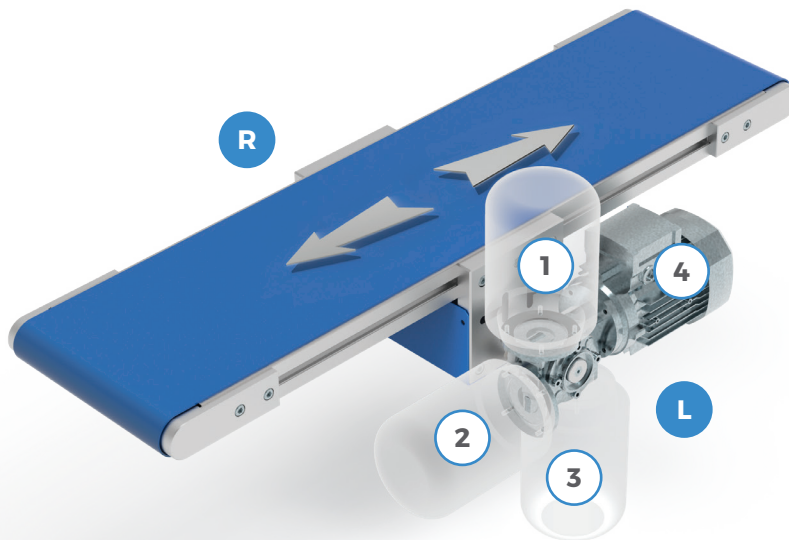
Code 15TB45i-L/R

		Pieces
16035	Bearing plate	1
16036	Tensioner	2
16038	Reducer plate R	1
16039	Protection cover R	1
16040	Pulley	2
16041	Reducer shaft	1
16042	Timing belt HTD	1
16043	Reducer plate L	1
16044	Protection cover L	1
16245	Bearing plate L	1
16246	Bearing plate R	1
16A2202-2RS	Bearing	4
	Fastening material	set



TB45C

Central drive



Code

EXAMPLE OF ORDERING

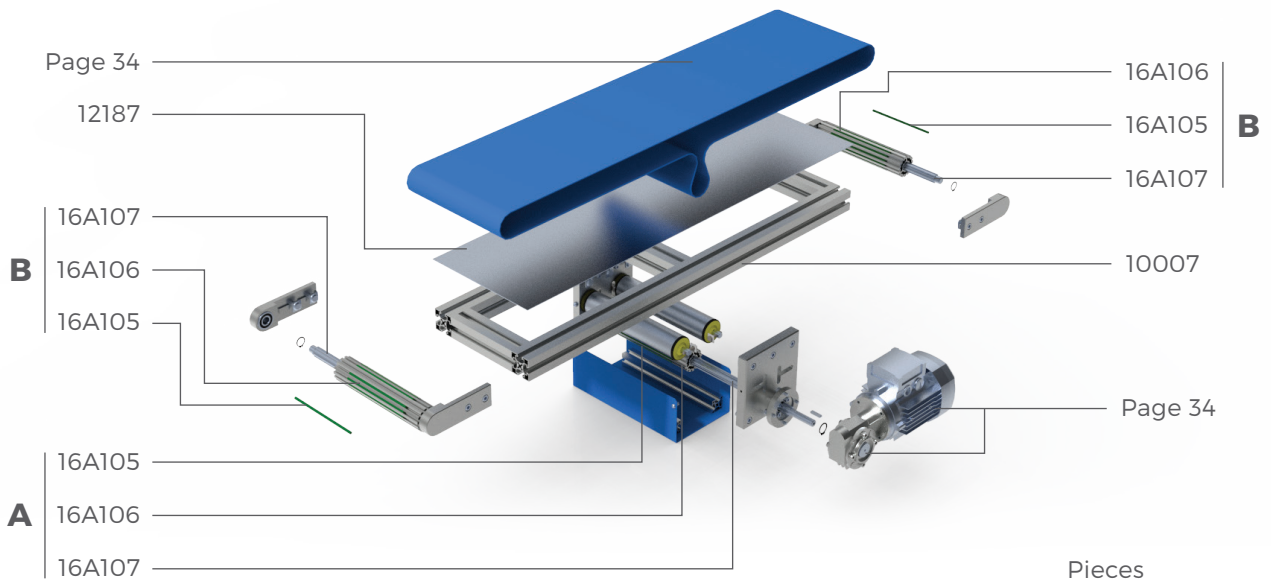
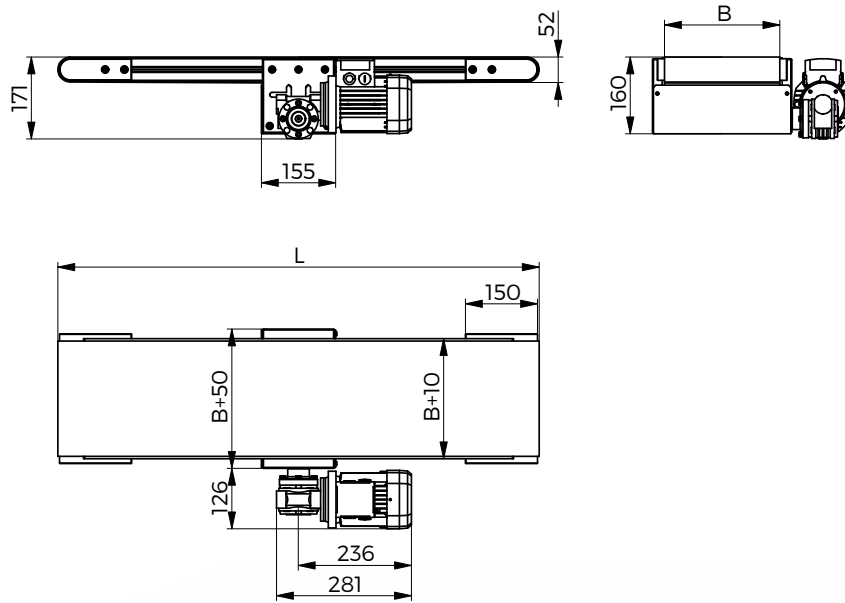
TB45C	-	1500	-	L	-	300	-	P	-	1	-	15	-	3
1		2		3		4		5		6		7		8

1	Conveyor type	TB45C
2	Length	L = min. 400 mm - max. 6000 mm
3	Drive side	R = right L = left
4	Belt width	B = min 35 mm; 50 mm; 80 mm - max 600 mm
5	Belt type	P = PVC A = polyurethane S = special
6	Motor with reducer - orientation	1 - 2 - 3
7	Side panels	min. 12 mm - max. 40 mm N = no, S = special
8	Speed	min. 2,9 m/min - max. 28,7 m/min

MOTOR	REDUCER	kW		(m/min)								
BN56 B4	B14 VF30/P i = 70	0.09	2,9									
BN63 B4	B14 VF30/P i = 60; i = 40; i = 30; i = 20; i = 15; i = 10; i = 7	0.18		3,3	5	6,7	10	13,4	20	28,7		

TB45C

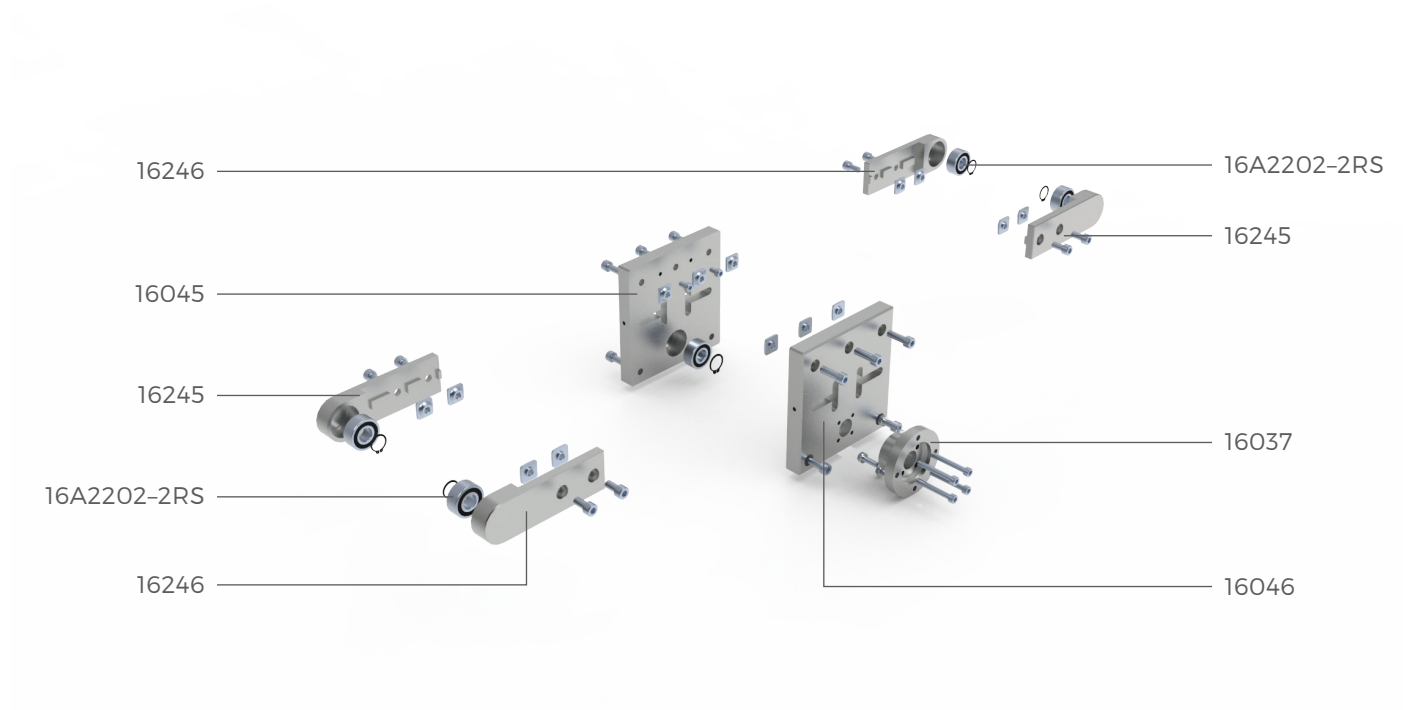
Components



		Pieces
Page 34	Motor with reducer	1
Page 34	Belt	1
12187	Stainless steel sheet 1.5 mm	1
10007	Al. frame 45 x 45 L	set
P	Protection cover	1
A	Drive roller	1
16A105	Roller rubber band Ø5 mm	15
16A106	Al.roller Ø48.5 mm	1
16A107	Spline shaft 16AS	1
B	PTO roller	2
16A105	Roller rubber band Ø5 mm	15
16A106	Al.roller Ø48.5 mm	1
16A107	Spline axle 16AS	1

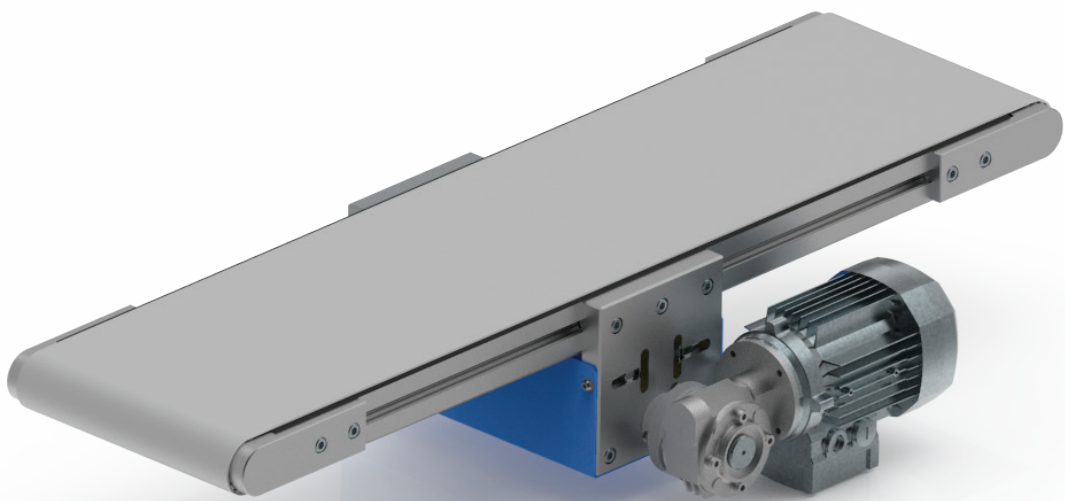
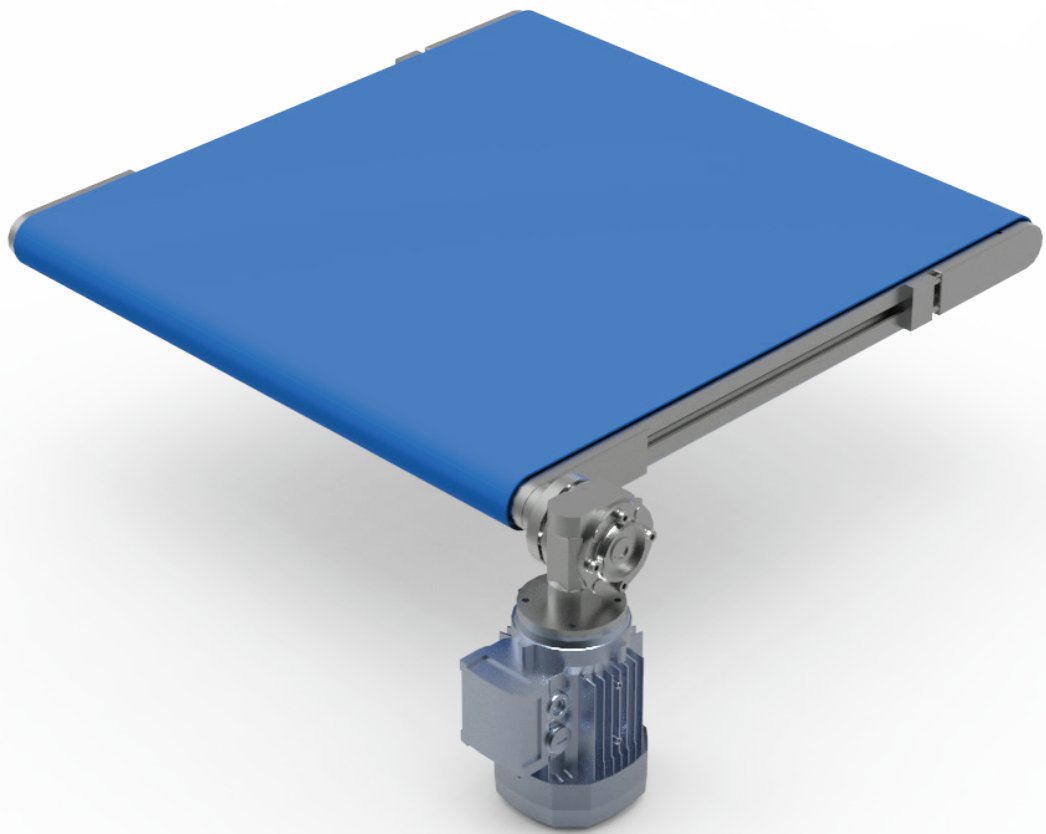
TB45C

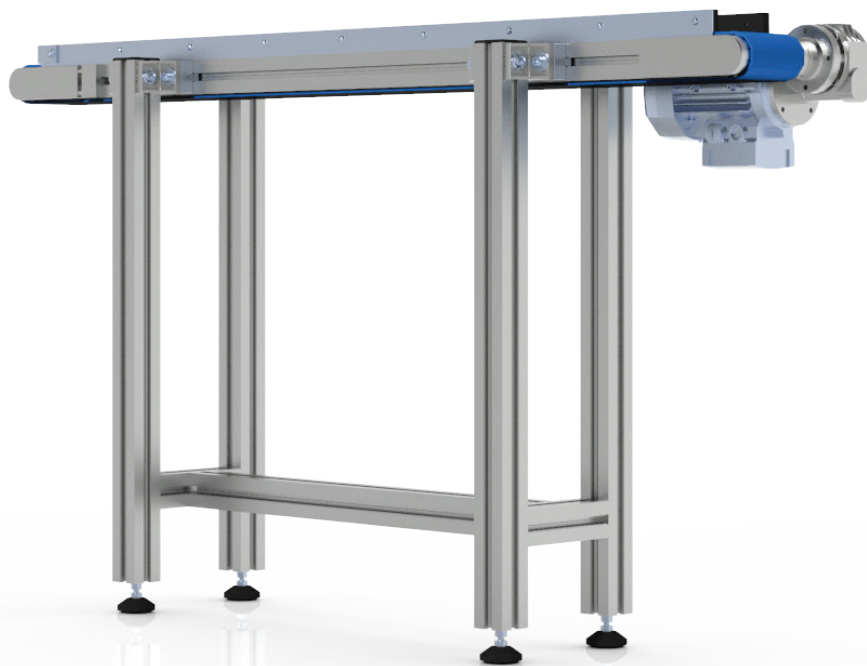
KIT - Assembly



Code 15TB45i-L/R

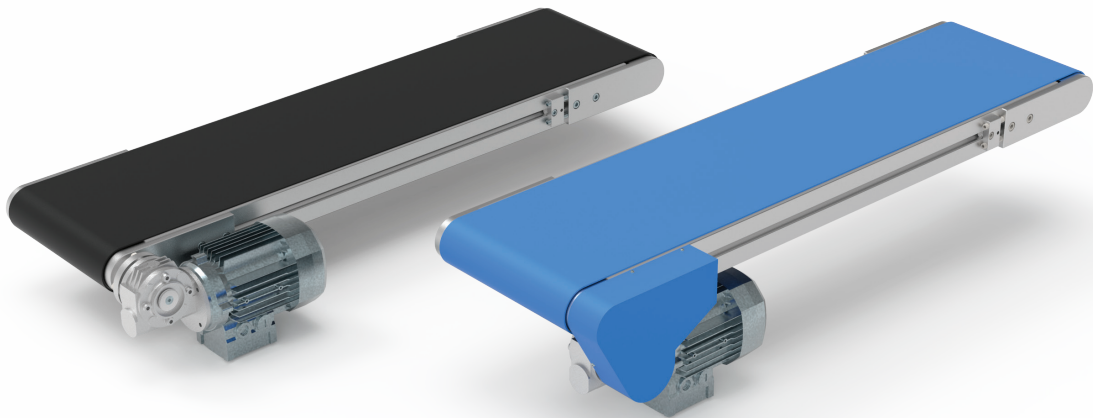
		Pieces
16037	Flange	2
16045	Drive plate	1
16046	Reducer plate	1
16245	Bearing plate L	2
16246	Bearing plate R	2
16A2202-2RS	Bearing	5
	Fastening material	set





CONVEYOR

TB60



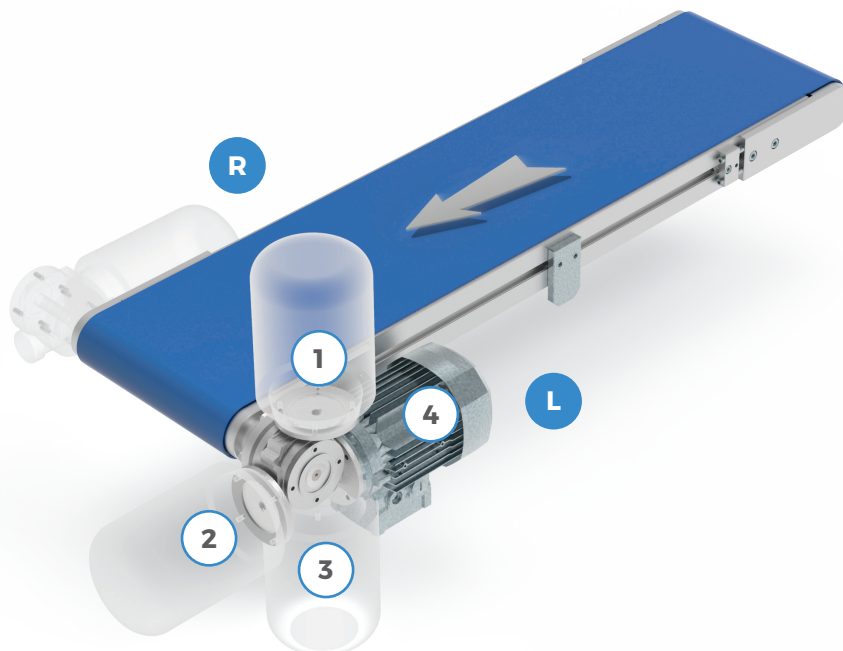
TB60D

TB60i

Type TB60 conveyors are intended for loads where the total load weight on the conveyor does not exceed 120 kg. The selection of the conveyor type depends on many parameters (length, width, type of load, etc.), we therefore recommend that you consult with our technical service.

TB60D

Direct drive



Code

EXAMPLE OF ORDERING

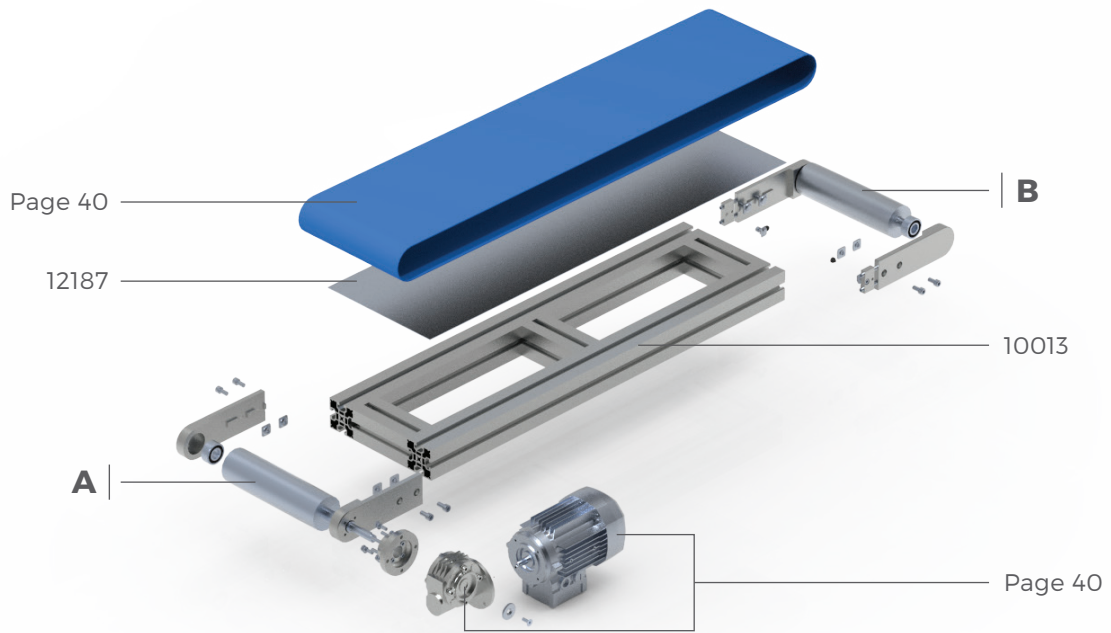
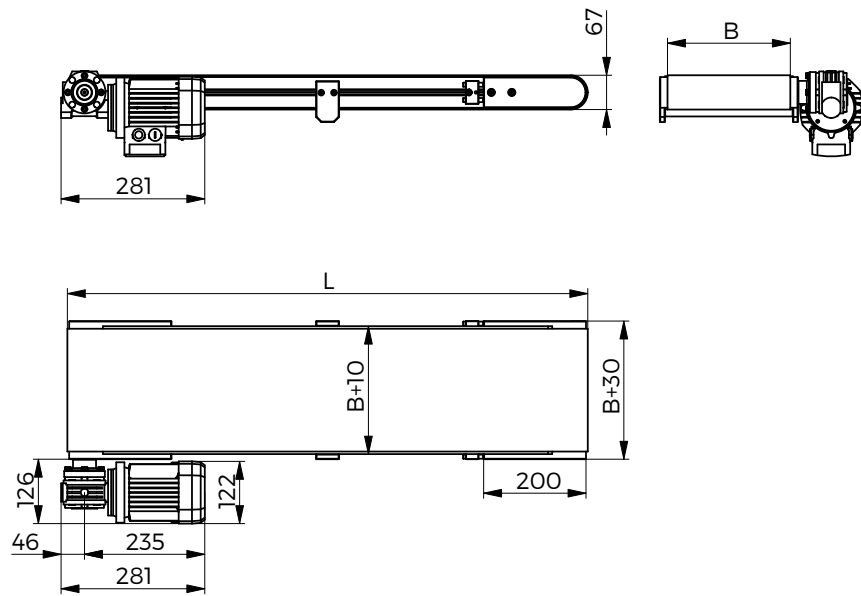
TB60D	-	1500	-	L	-	300	-	P	-	1	-	15	-	3.8
1		2		3		4		5		6		7		8

1	Conveyor type	TB60D
2	Length	L = min. 500 mm - max. 6000 mm
3	Drive side	R = right L = left
4	Belt width	B = min. 35 mm; 50 mm; 80 mm - max. 1000 mm
5	Belt type	P = PVC A = polyurethane S = special
6	Motor with reducer - orientation	1 - 2 - 3 - 4
7	Side panels	min. 12 mm - max. 40 mm N = no, S = special
8	Speed	min. 3,9 m/min - max. 37,9 m/min

MOTOR	REDUCER	kW		(m/min)								
BN56 B4	B14 VF30/P i = 70	0.09	3,9									
BN63 B4	B14 VF30/P i = 60; i = 40; i = 30; i = 20; i = 15; i = 10; i = 7	0.18		4,4	6,6	8,8	13,3	17,7	26,5	37,9		

TB60D

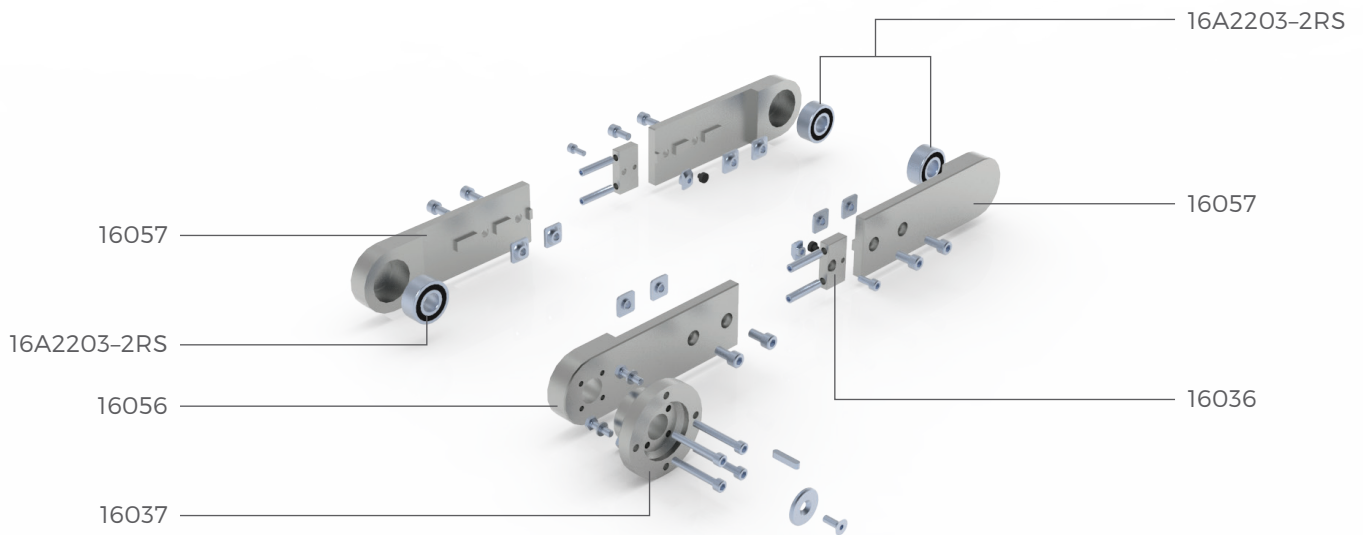
Components



		Pieces
Page 40	Motor with reducer	1
Page 40	Belt	1
12187	Stainless steel sheet 1.5 mm	1
10013	Al. frame 45 x 60	set
A	Drive roller	1
	Steel roller Ø64 mm	
B	PTO roller	1
	Steel roller Ø64 mm	

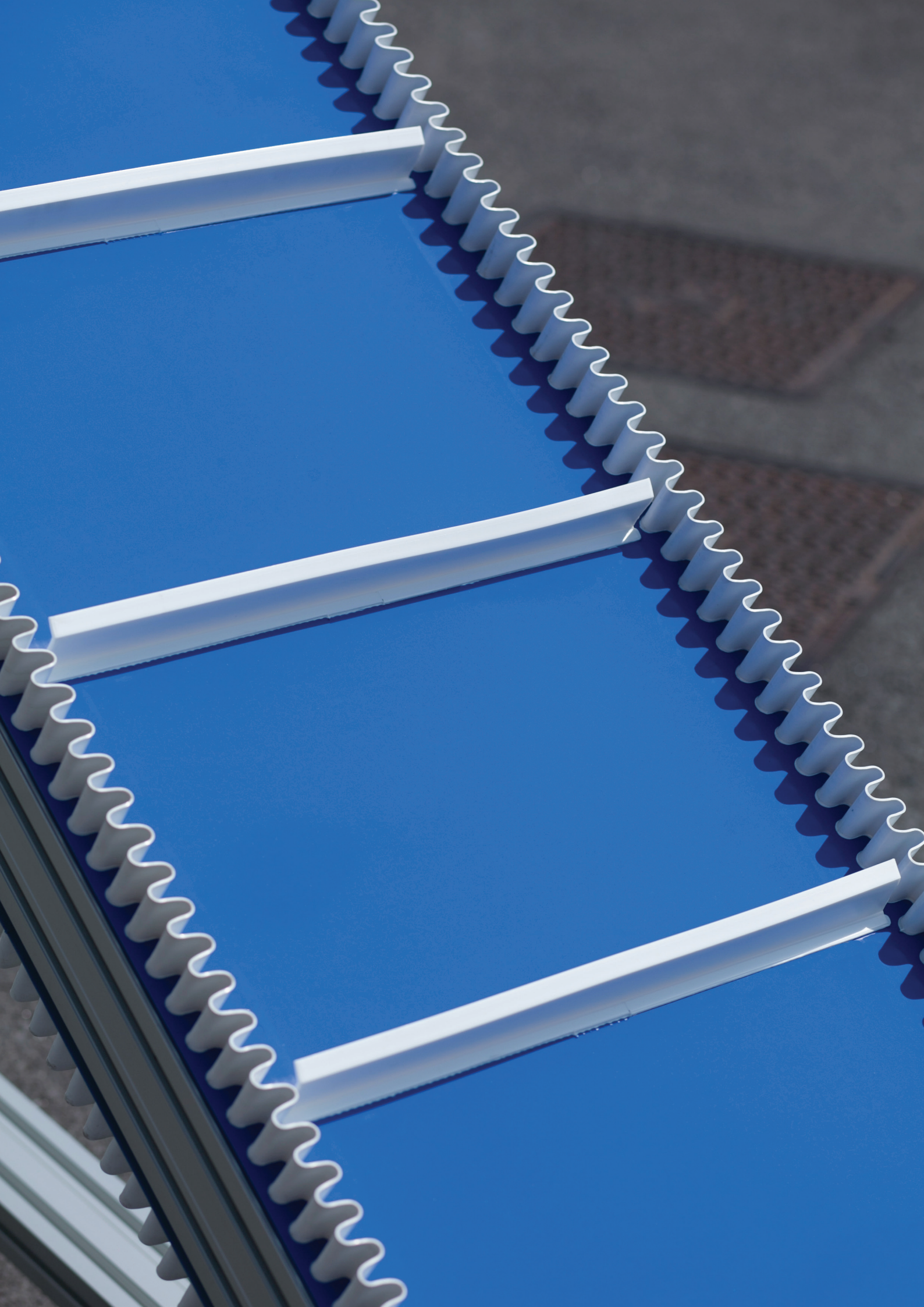
TB60D

KIT - Assembly



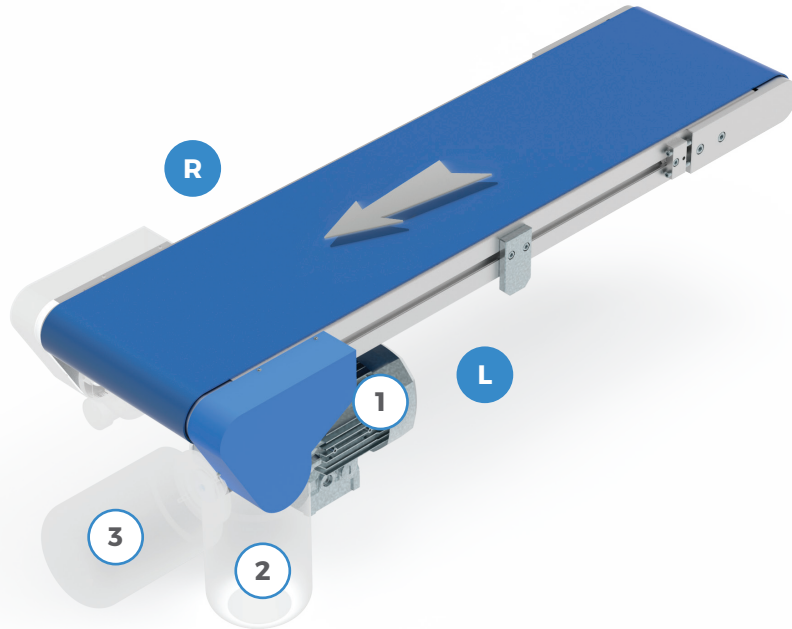
Code 15TB60D

		Pieces
16036	Tensioner	2
16037	Flange	1
16056	Reducer plate	1
16057	Bearing plate	3
16A2202-2RS	Bearing	3
	Fastening material	set



TB60i

Indirect drive



Code

EXAMPLE OF ORDERING

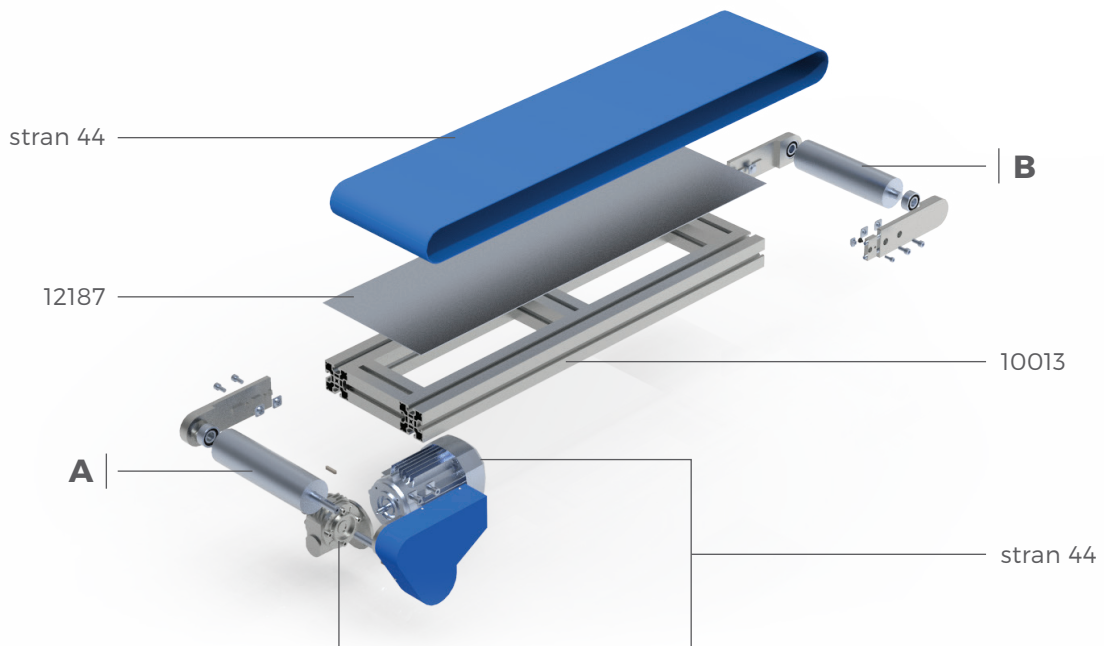
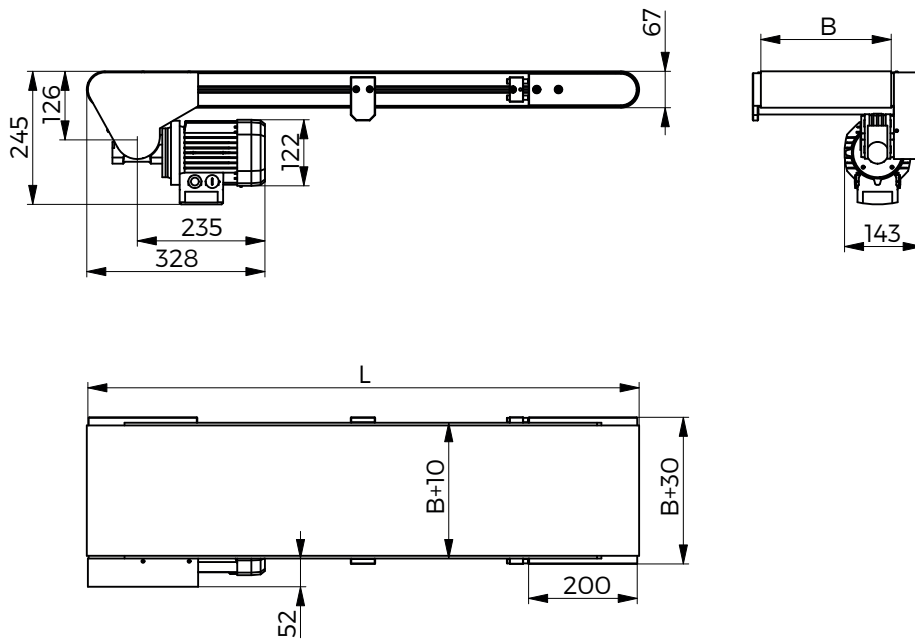
TB60i	-	1500	-	L	-	300	-	P	-	1	-	15	-	3.8
1		2		3		4		5		6		7		8

1	Conveyor type	TB60i
2	Length	L = min. 500 mm - max. 6000 mm
3	Drive side	R = right L = left
4	Belt width	B = min. 35 mm; 50 mm; 80 mm - max. 1000 mm
5	Belt type	P = PVC A = polyurethane S = special
6	Motor with reducer - orientation	1 - 2 - 3
7	Side panels	min. 12 mm - max. 40 mm N = no, S = special
8	Speed	min. 3,9 m/min - max. 37,9 m/min

MOTOR	REDUCER	kW	(m/min)											
BN56 B4	B14 VF30/P i = 70	0.09	3,9											
BN63 B4	B14 VF30/P i = 60; i = 40; i = 30; i = 20; i = 15; i = 10; i = 7	0.18		4,4	6,6	8,8	13,3	17,7	26,5	37,9				

TB60i

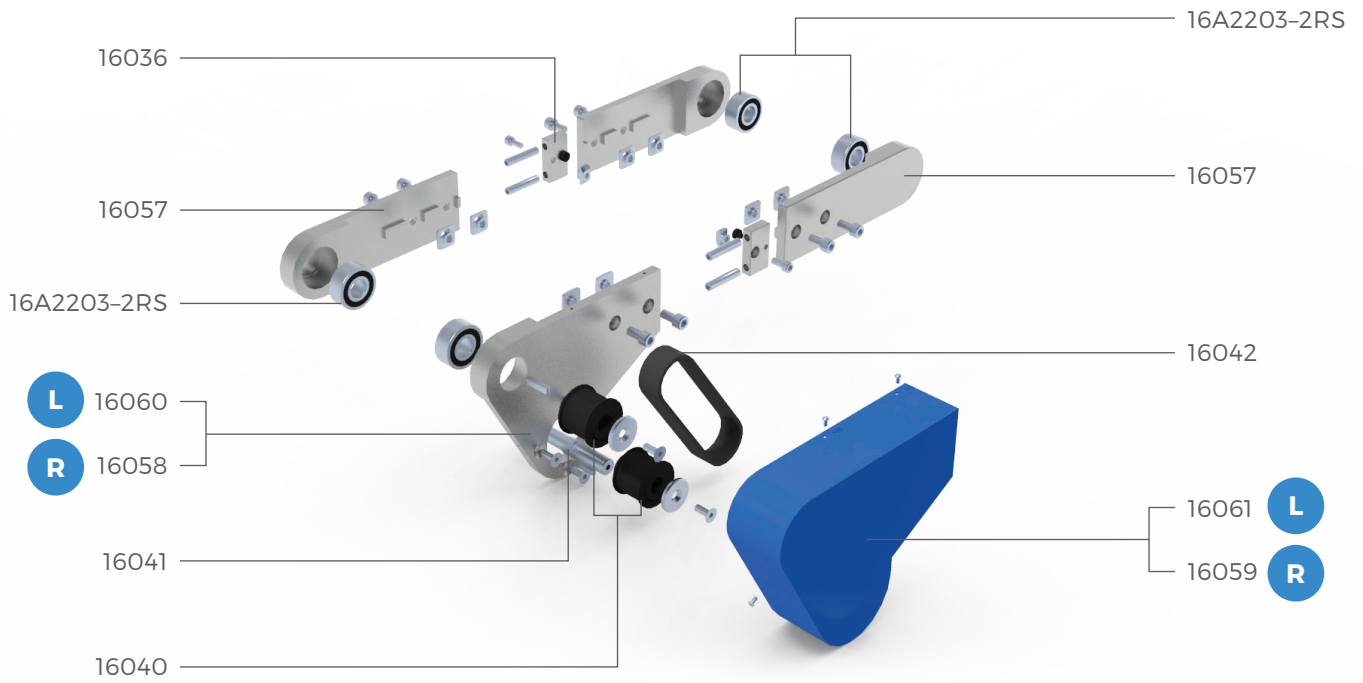
Components



		Pieces
Page 44	Motor with reducer	1
Page 44	Belt	1
12187	Stainless steel sheet 1.5 mm	1
10013	Al. frame 45 x 60	set
A	Drive roller	1
	Steel roller $\varnothing 64$ mm	
B	PTO roller	1
	Steel roller $\varnothing 64$ mm	

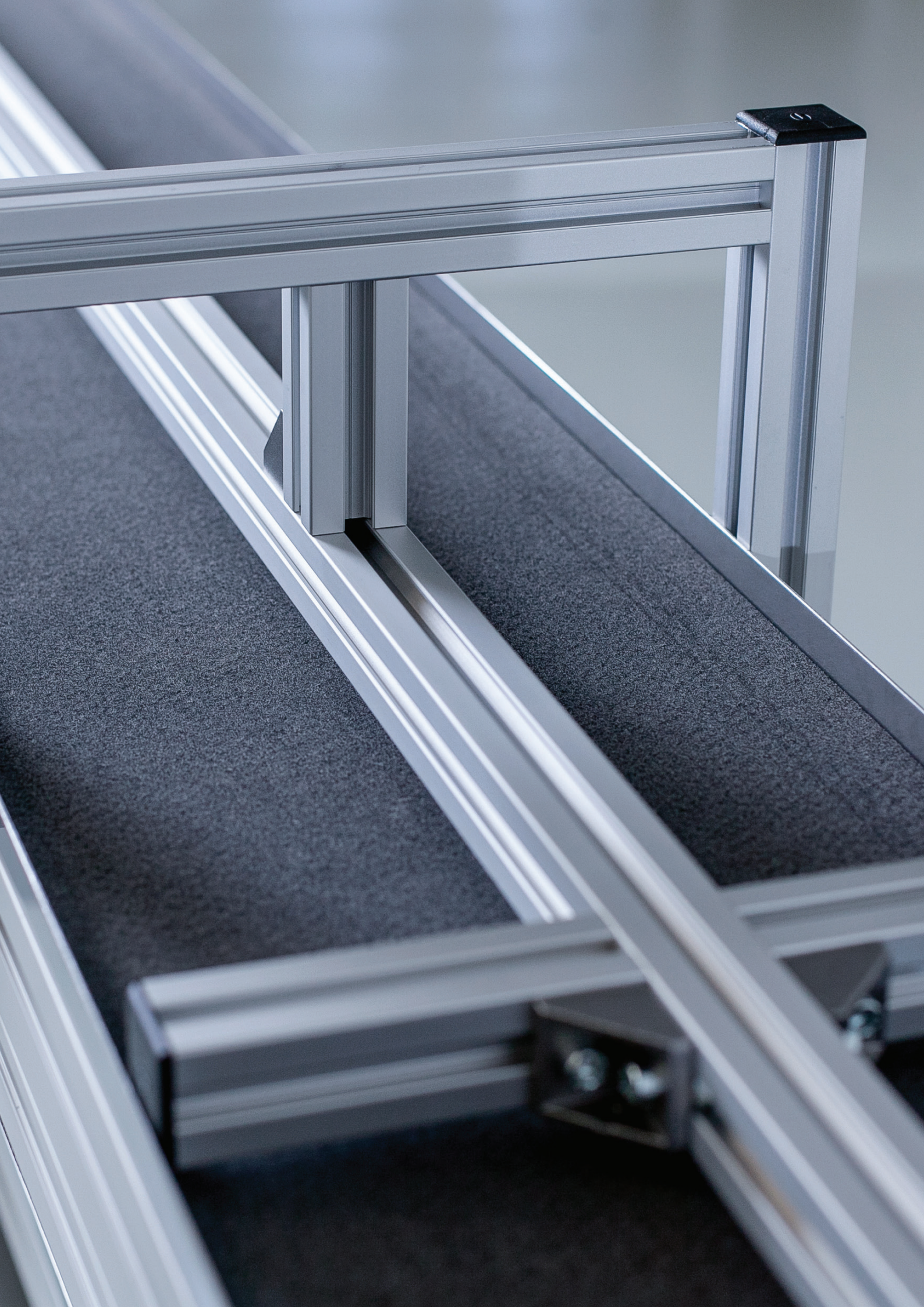
TB60i

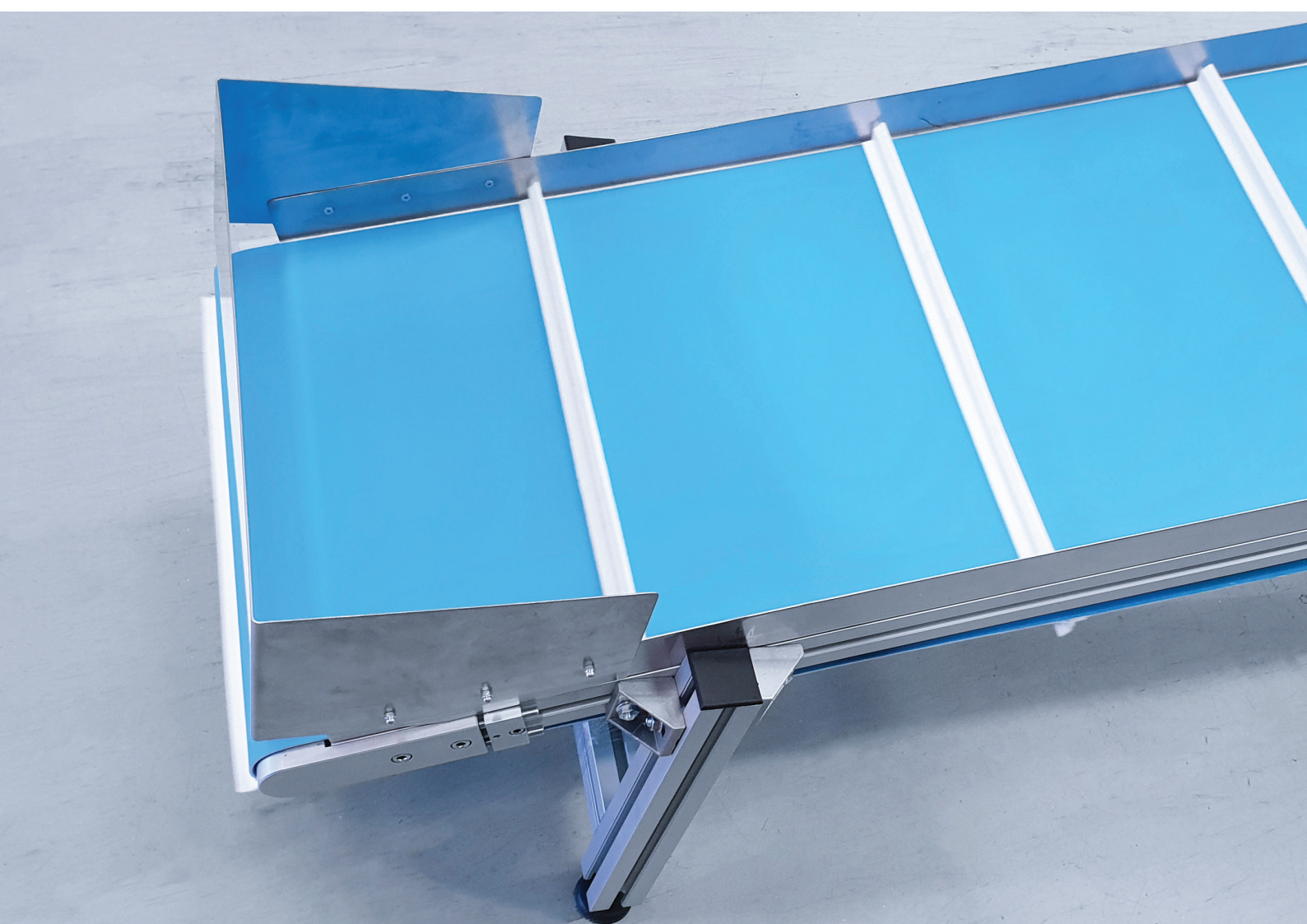
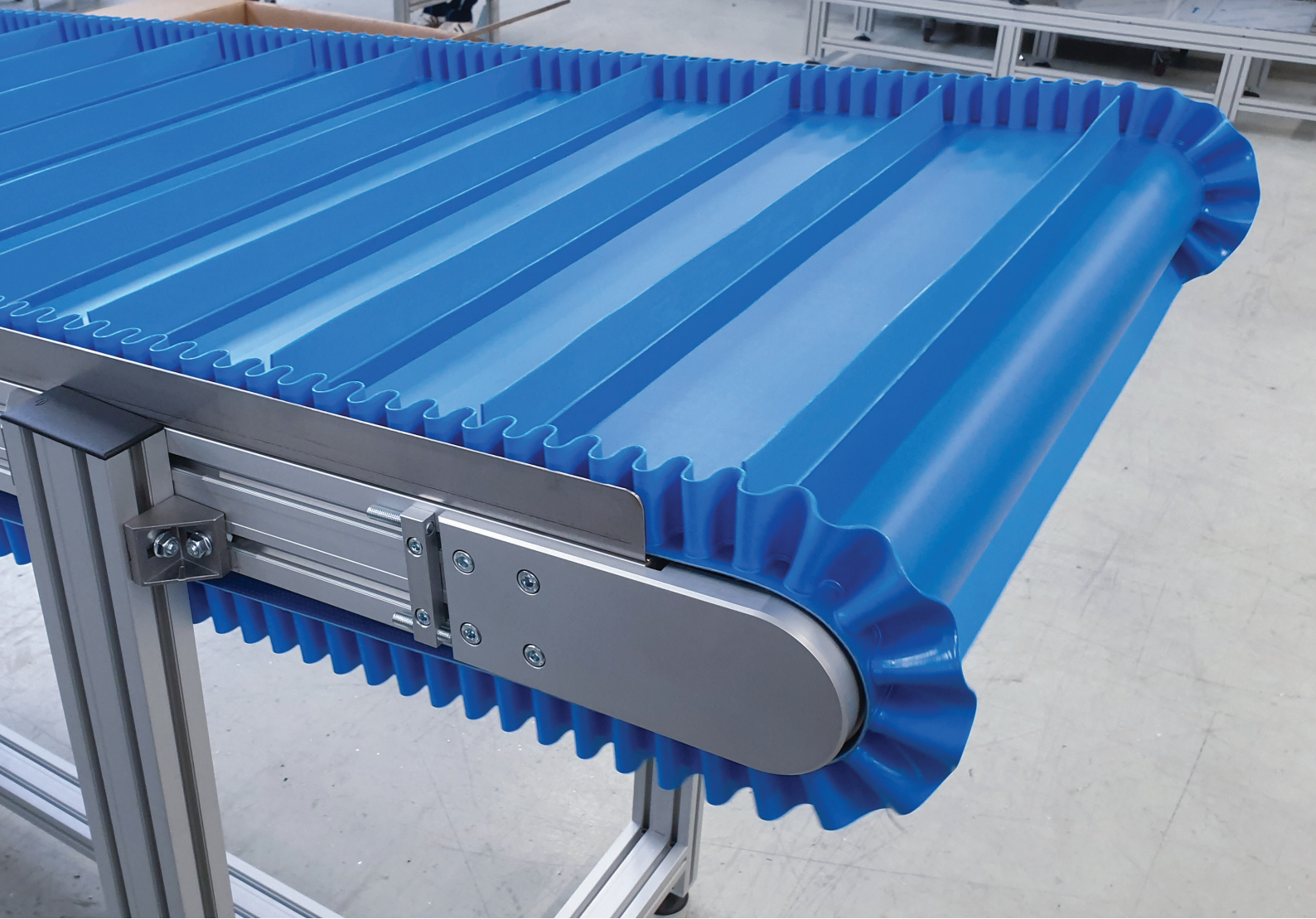
Kit - Assembly



Code 15TB60i-L/R

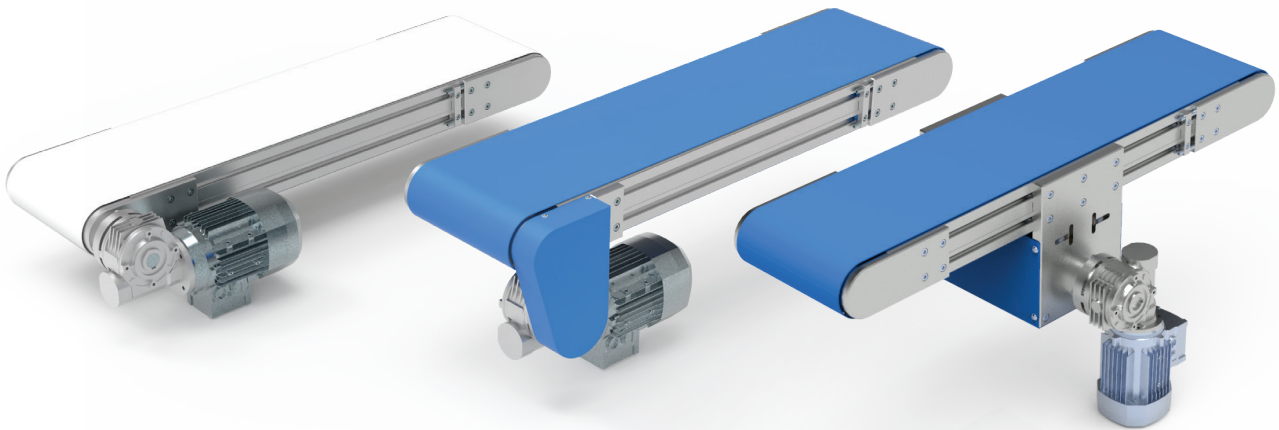
			Pieces
16036	Tensioner		2
16040	Pulley		2
16041	Reducer shaft		1
16042	Timing belt HTD		1
16057	Bearing plate		3
16058	Reducer plate R		1
16059	Protection cover R		1
16060	Reducer plate L		1
16061	Protection cover L		1
16A2203-2RS	Bearing		4
	Fastening material		set





CONVEYOR

TB90



TB90D

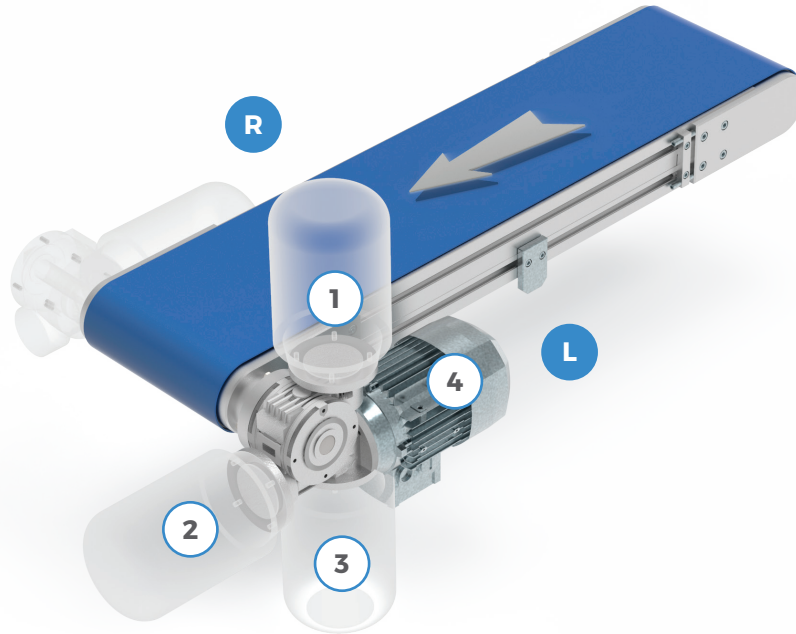
TB90i

TB90C

Type TB90 conveyors are intended for loads where the total load weight on the conveyor does not exceed 180 kg. The selection of the conveyor type depends on many parameters (length, width, type of load, etc.), we therefore recommend that you consult with our technical service.

TB90D

Direct drive



Code

EXAMPLE OF ORDERING

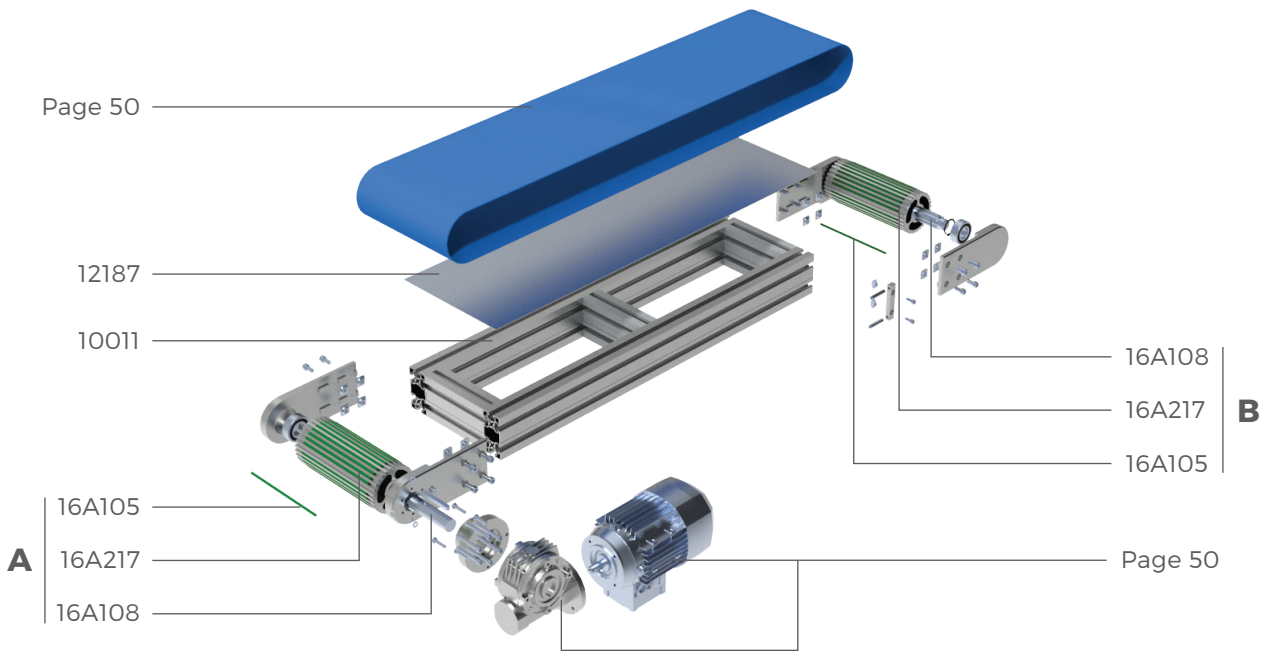
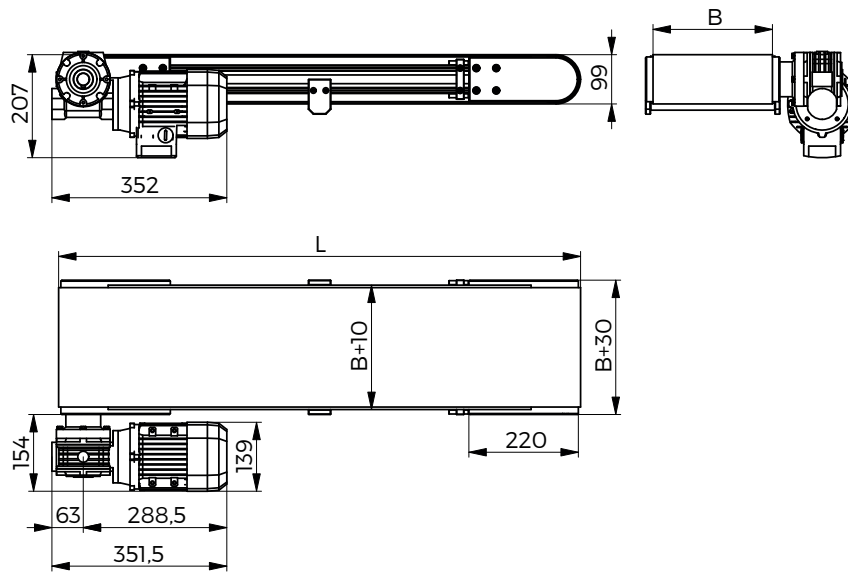
TB90D	-	1500	-	L	-	300	-	P	-	1	-	15	-	4
1		2		3		4		5		6		7		8

1	Conveyor type	TB90D
2	Length	L = min. 600 mm - max. 10000 mm
3	Drive side	R = right L = left
4	Belt width	B = min. 35 mm; 50 mm; 80 mm - max. 1500 mm
5	Belt type	P = PVC A = polyurethane S = special
6	Motor with reducer - orientation	1 - 2 - 3 - 4
7	Side panels	min. 12 mm - max. 40 mm N = no, S = special
8	Speed	min. 3.9 m/min - max. 28.8 m/min

MOTOR	REDUCER	kW	(m/min)											
BN63 B4	B14 VF49/P i = 100; i = 80; i = 70; i = 60; i = 45; i = 36	0.18	3,9	4,9	5,5	6,5	8,6	10,8						
BN71 B4	B14 VF49/P i = 28; i = 24; i = 18; i = 14	0.37								14,4	16,8	22,4	28,8	

TB90D

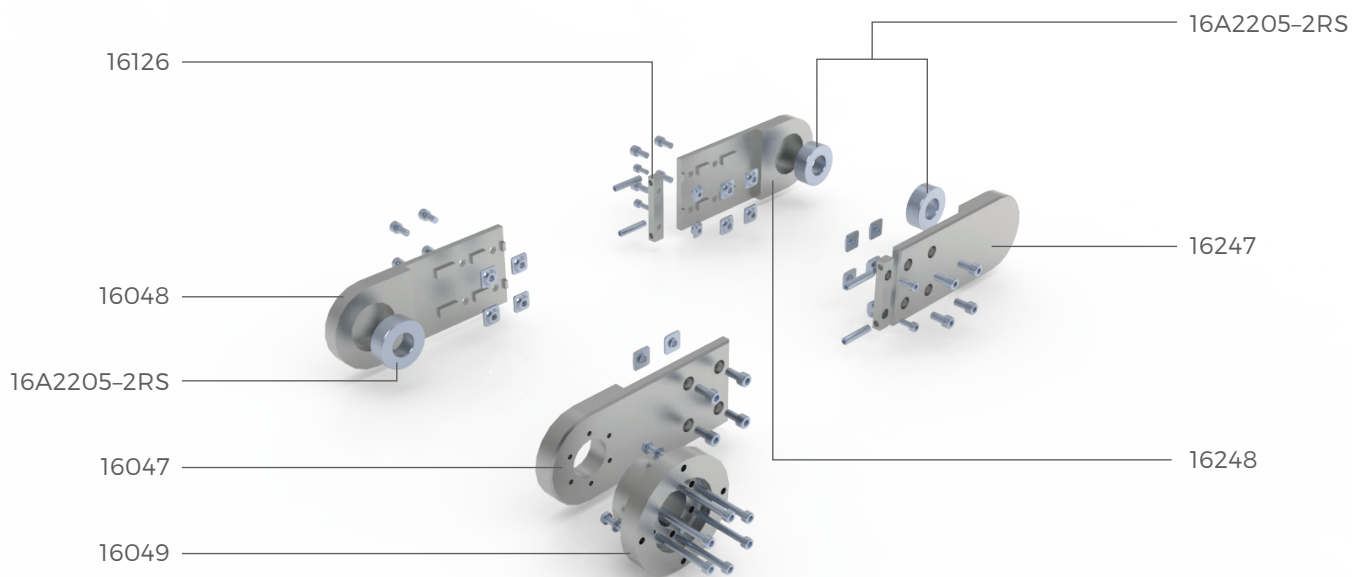
Components



		Pieces
Page 50	Motor with reducer	1
Page 50	Belt	1
12187	Stainless steel sheet 1.5 mm	1
10011	Al. frame 45 x 90 L	set
A	Drive roller	1
16A217	Al.roller Ø93.5 mm	1
16A108	Spline shaft 26AS	1
16A105	Roller rubber band Ø5 mm	30
B	PTO roller	1
16A217	Al.roller Ø93.5 mm	1
16A108	Spline axle 26AS	1
16A105	Roller rubber band Ø5 mm	30

TB90D

Kit - Assembly



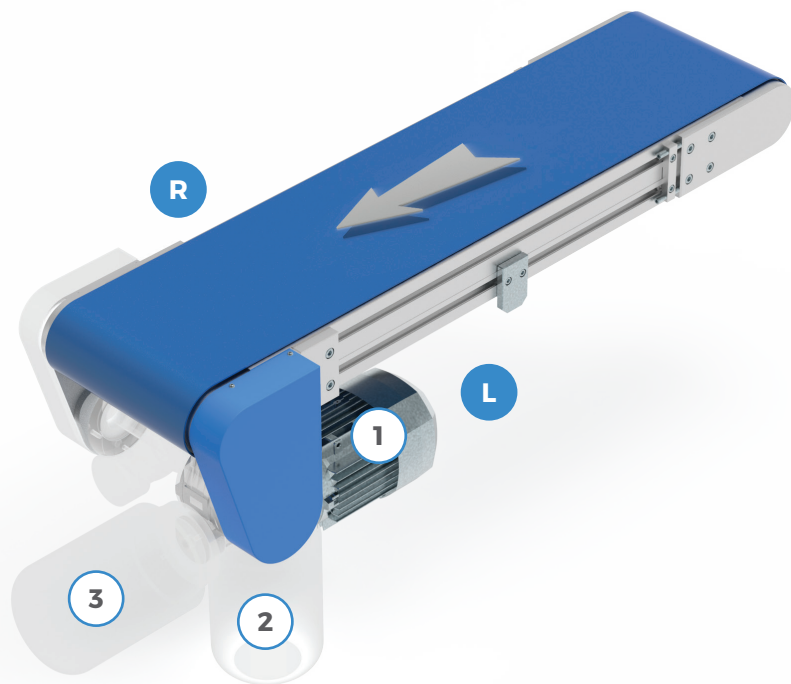
Code 15TB90D

			Pieces
16047	Reducer plate		1
16048	Bearing plate		1
16049	Flange		1
16126	Tensioner		2
16247	Bearing plate L		1
16248	Bearing plate R		1
16A2205-2RS	Bearing		3
	Fastening material		set



TB90i

Indirect drive



Code

EXAMPLE OF ORDERING

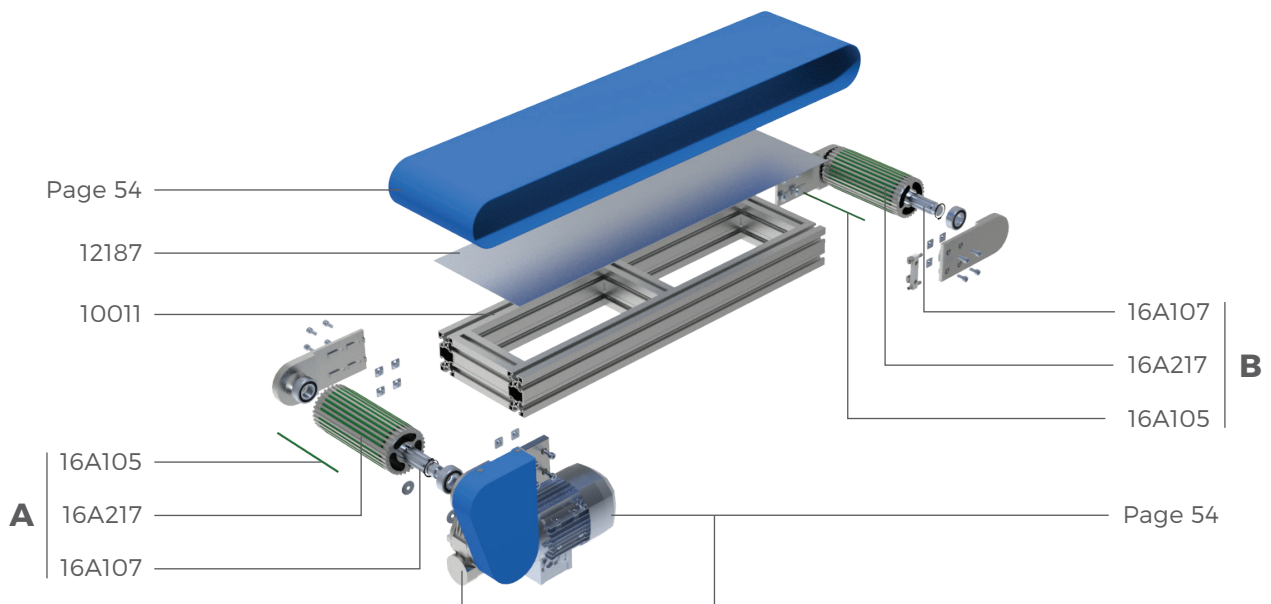
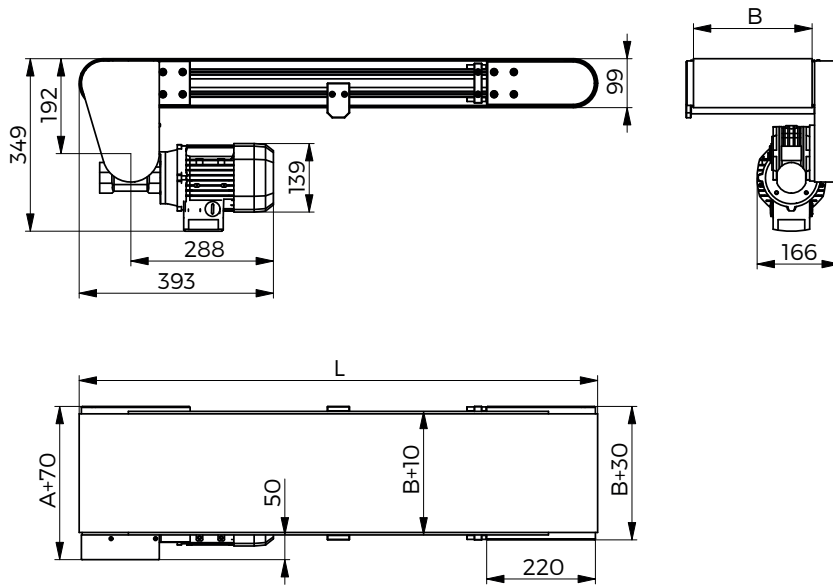
TB90i	-	1500	-	L	-	300	-	P	-	1	-	15	-	4
1		2		3		4		5		6		7		8

1	Conveyor type	TB90i
2	Length	L = min. 600 mm - max. 10000 mm
3	Drive side	R = right L = left
4	Belt width	B = min. 35 mm - max. 1500 mm
5	Belt type	P = PVC A = polyurethane S = special
6	Motor with reducer - orientation	1 - 2 - 3
7	Side panels	min. 12 mm - max. 40 mm N = no, S = special
8	Speed	min. 3.9 m/min - max. 28.8 m/min

MOTOR	REDUCER	kW	(m/min)											
BN63 B4	B14 VF49/P i = 100; i = 80; i = 70; i = 60; i = 45; i = 36	0.18	3,9	4,9	5,5	6,5	8,6	10,8						
BN71 B4	B14 VF49/P i = 28; i = 24; i = 18; i = 14	0.37								14,4	16,8	22,4	28,8	

TB90i

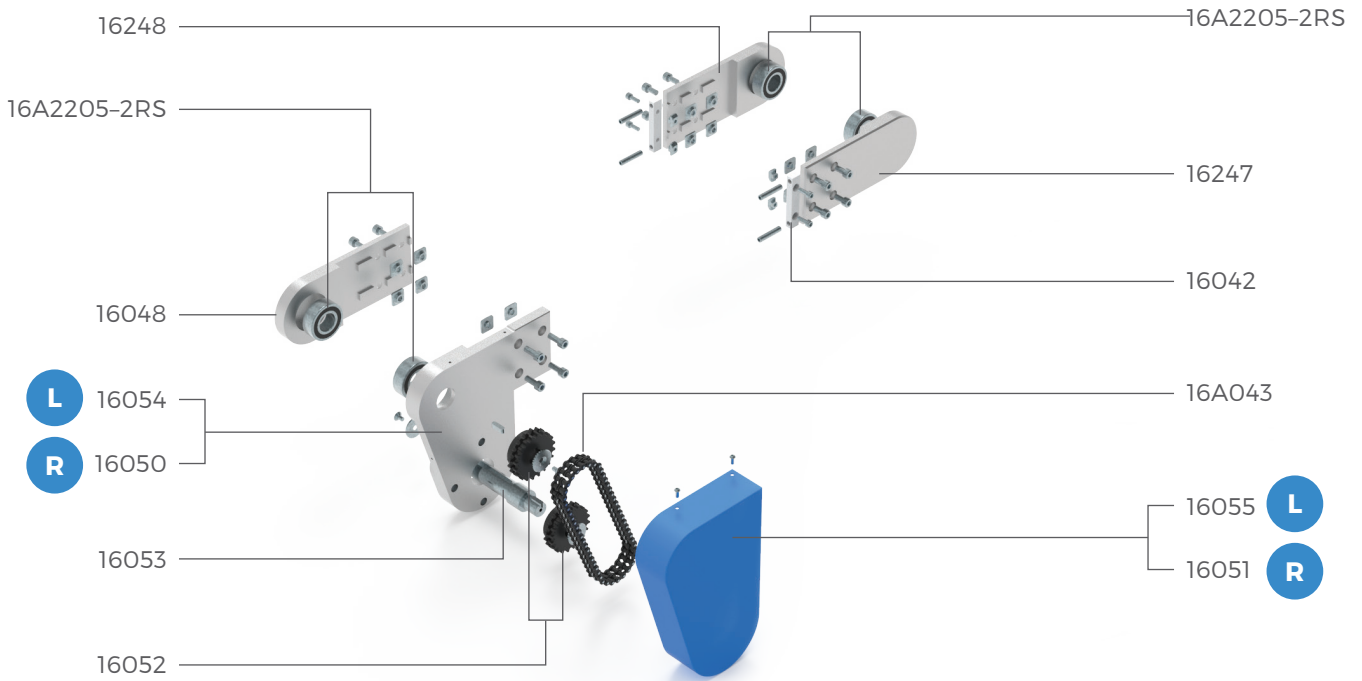
Components



		Pieces
Page 54	Motor with reducer	1
Page 54	Belt	1
12187	Stainless steel sheet 1.5 mm	1
10011	Al. frame 45 x 90 L	set
A	Drive roller	1
16A217	Al.roller Ø93.5 mm	1
16A108	Spline shaft 26AS	1
16A105	Roller rubber band Ø5 mm	30
B	PTO roller	1
16A217	Al.roller Ø93.5 mm	1
16A107	Spline axle 26AS	1
16A105	Roller rubber band Ø5 mm	30

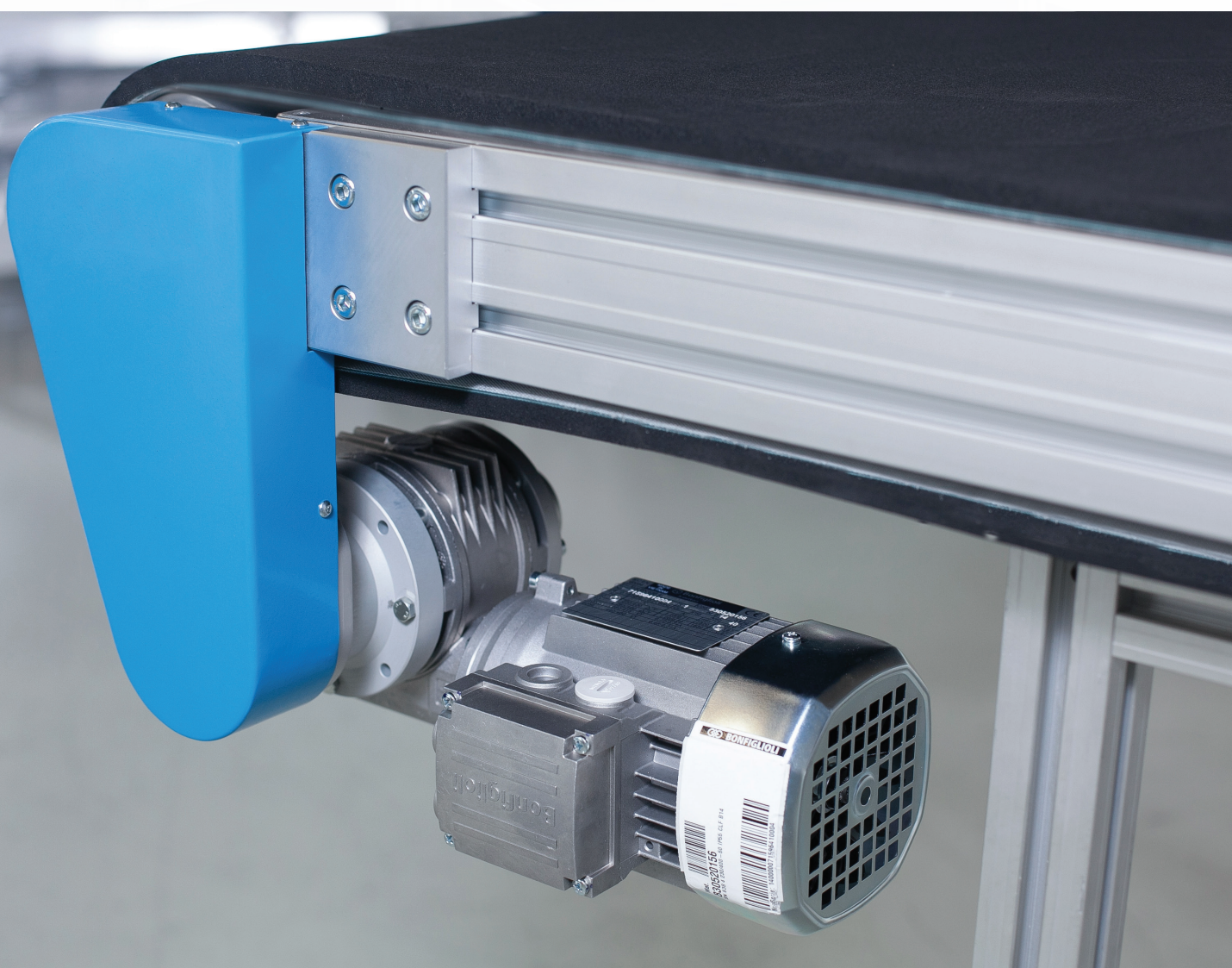
TB90i

KIT - Assembly



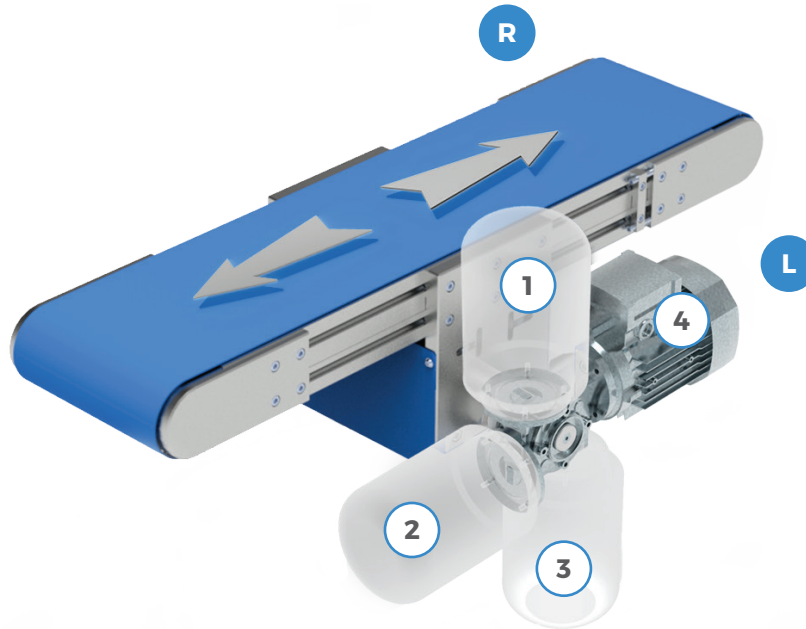
Code 15TB90i-L/R

			Pieces
16048	Bearing plate		1
16050	Reducer plate R		1
16051	Protection cover R		1
16052	Drive gear		2
16053	Reducer shaft		1
16054	Reducer plate L		1
16055	Protection cover L		1
16126	Tensioner		2
16247	Bearing plate L		1
16248	Bearing plate R		1
16A043	Chain		1
16A2205-2RS	Bearing		4
	Fastening material		set



TB90C

Central drive



Code

EXAMPLE OF ORDERING

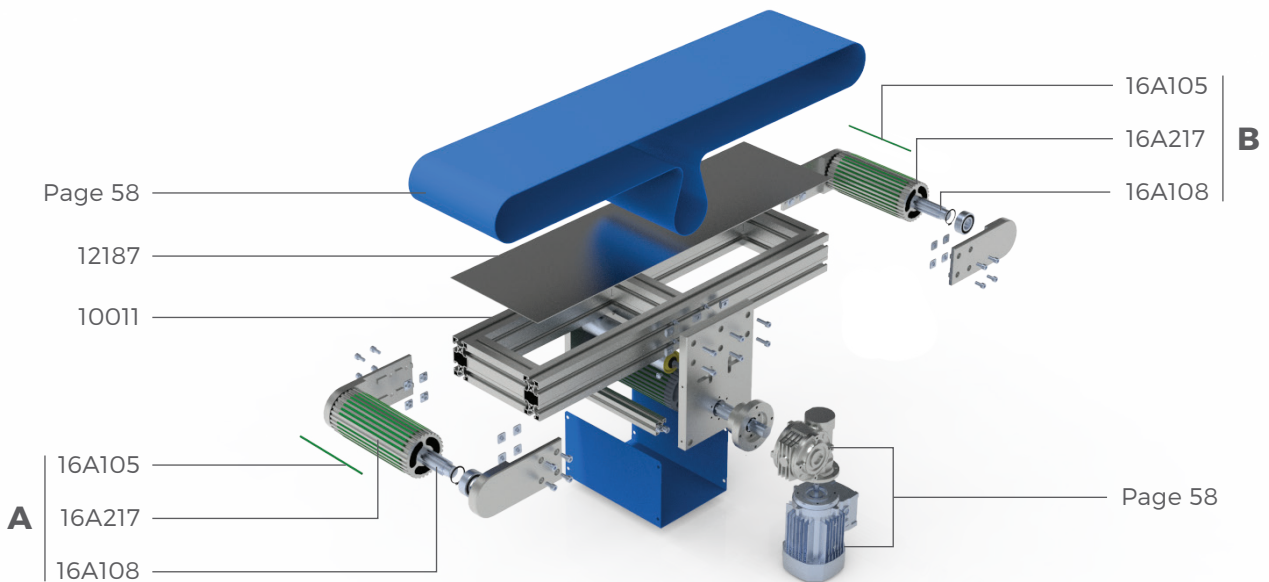
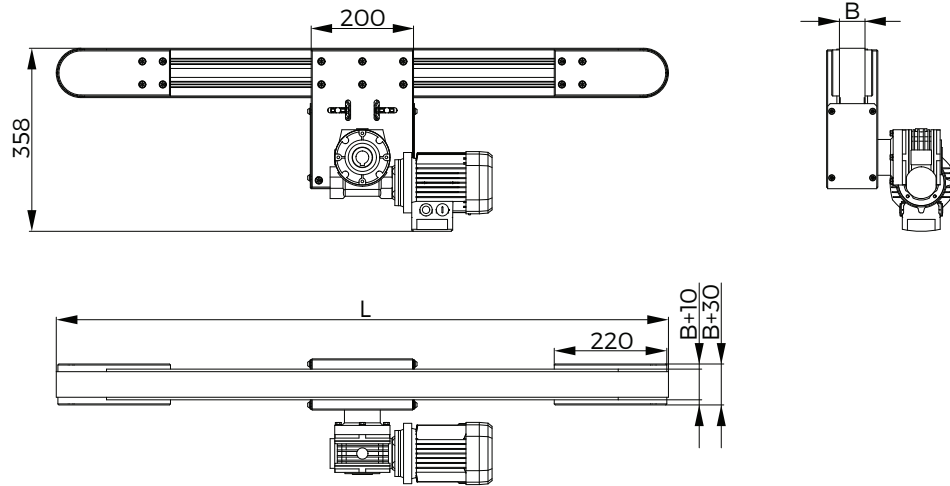
TB90C	-	1500	-	L	-	300	-	P	-	1	-	15	-	4
1		2		3		4		5		6		7		8

1	Conveyor type	TB90C
2	Length	L = min. 600 mm - max. 10000 mm
3	Drive side	R = right L = left
4	Belt width	B = min. 35 mm; 50 mm; 80 mm - max. 1500 mm
5	Belt type	P = PVC A = polyurethane S = special
6	Motor with reducer - orientation	1 - 2 - 3 - 4
7	Side panels	min. 12 mm - max. 40 mm N = no, S = special
8	Speed	min. 3.9 m/min - max. 28.8 m/min

MOTOR	REDUCER	kW	(m/min)											
BN63 B4	B14 VF49/P i = 100; i = 80; i = 70; i = 60; i = 45; i = 36	0.18	3,9	4,9	5,5	6,5	8,6	10,8						
BN71 B4	B14 VF49/P i = 28; i = 24; i = 18; i = 14	0.37							14,4	16,8	22,4	28,8		

TB90C

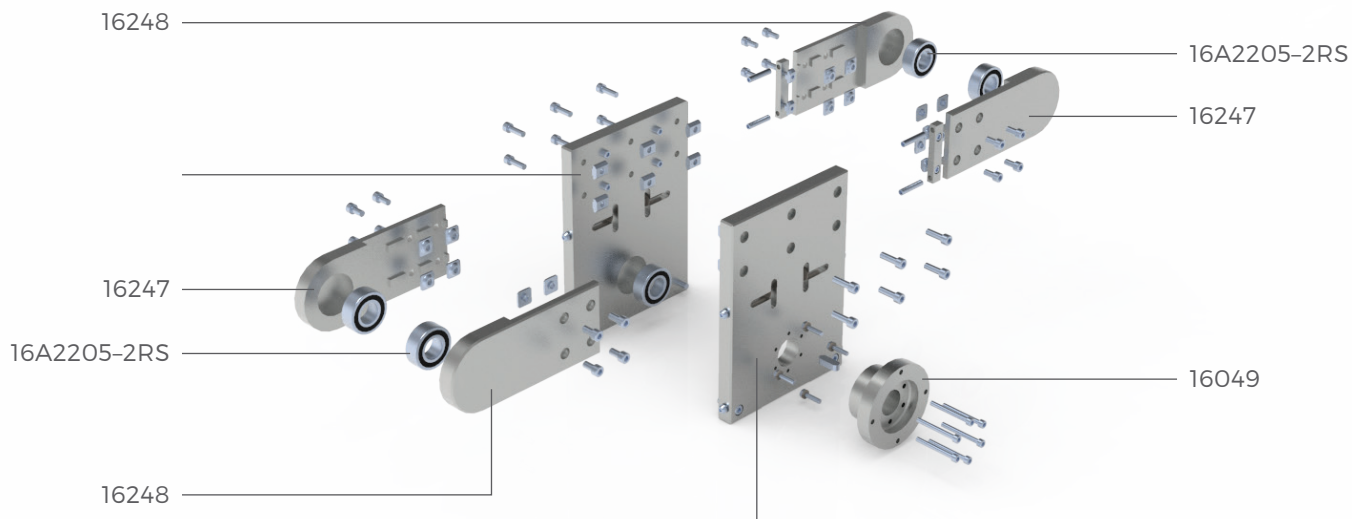
Components



		Pieces
Page 58	Motor with reducer	1
Page 58	Belt	1
12187	Stainless steel sheet 1.5 mm	1
10011	Al. frame 45 x 90 L	set
A	Drive roller	1
16A217	Al.roller \varnothing 93.5 mm	1
16A108	Spline shaft 26AS	1
16A105	Roller rubber band \varnothing 5 mm	30
B	PTO roller	1
16A217	Al.roller \varnothing 93.5 mm	1
16A108	Spline axle 26AS	1
16A105	Roller rubber band \varnothing 5 mm	30

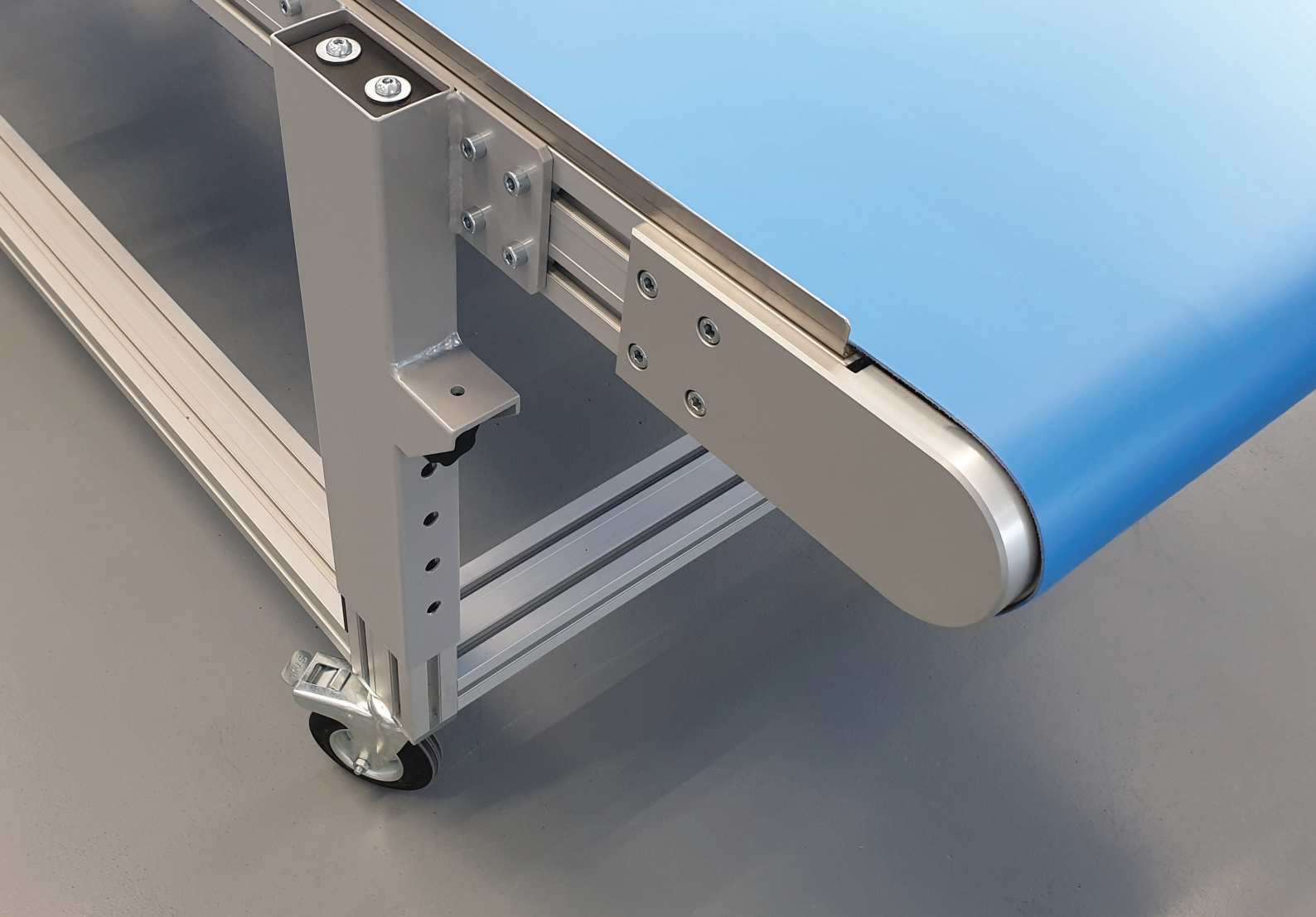
TB90C

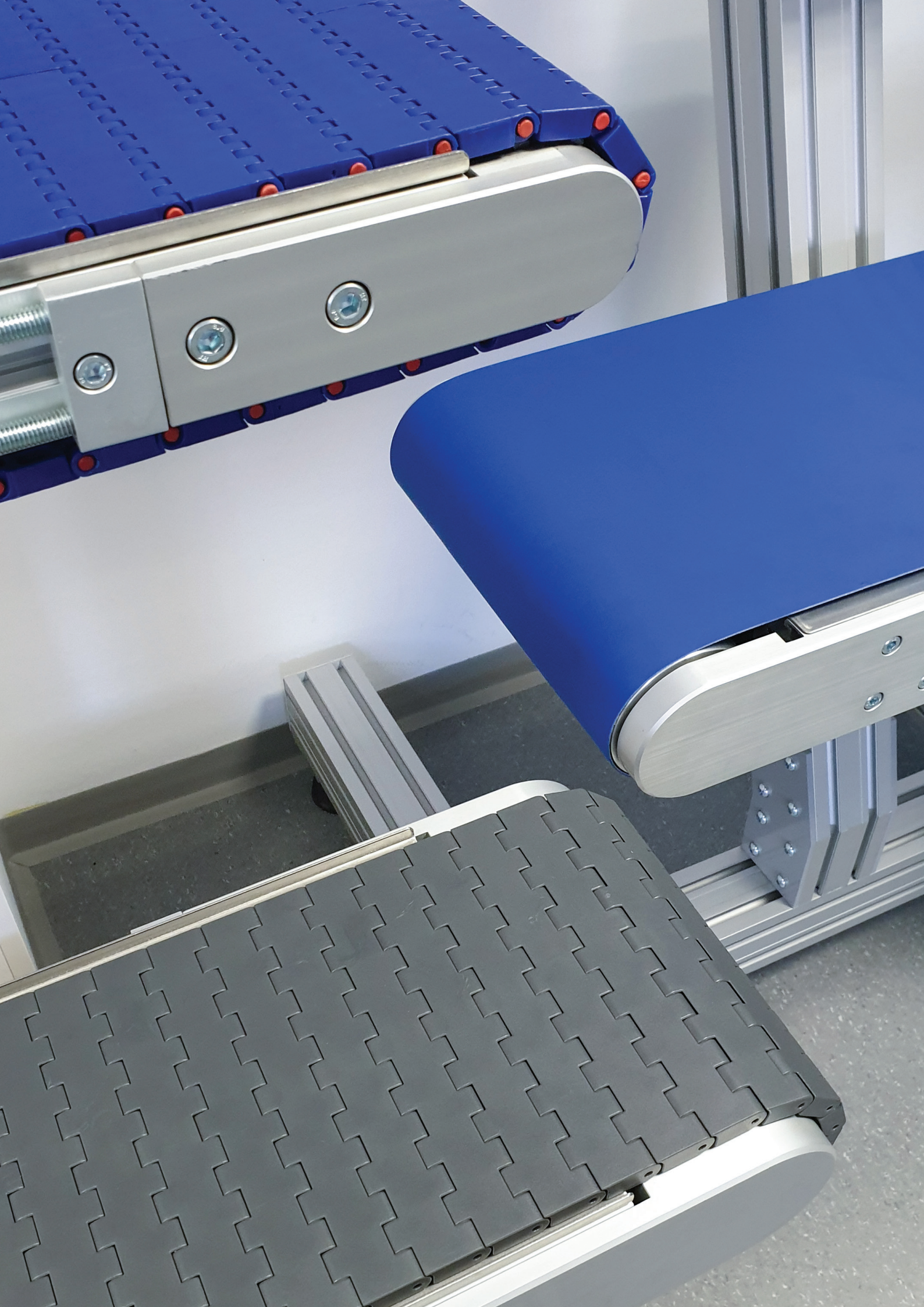
KIT - Assembly



Code 15TB90C

16247	Bearing plate L	2
16248	Bearing plate R	2
	Drive plate	1
16049	Flange	1
	Reducer plate	1
16A2205-2RS	Bearing	5
	Fastening material	set





CONVEYOR

TBS

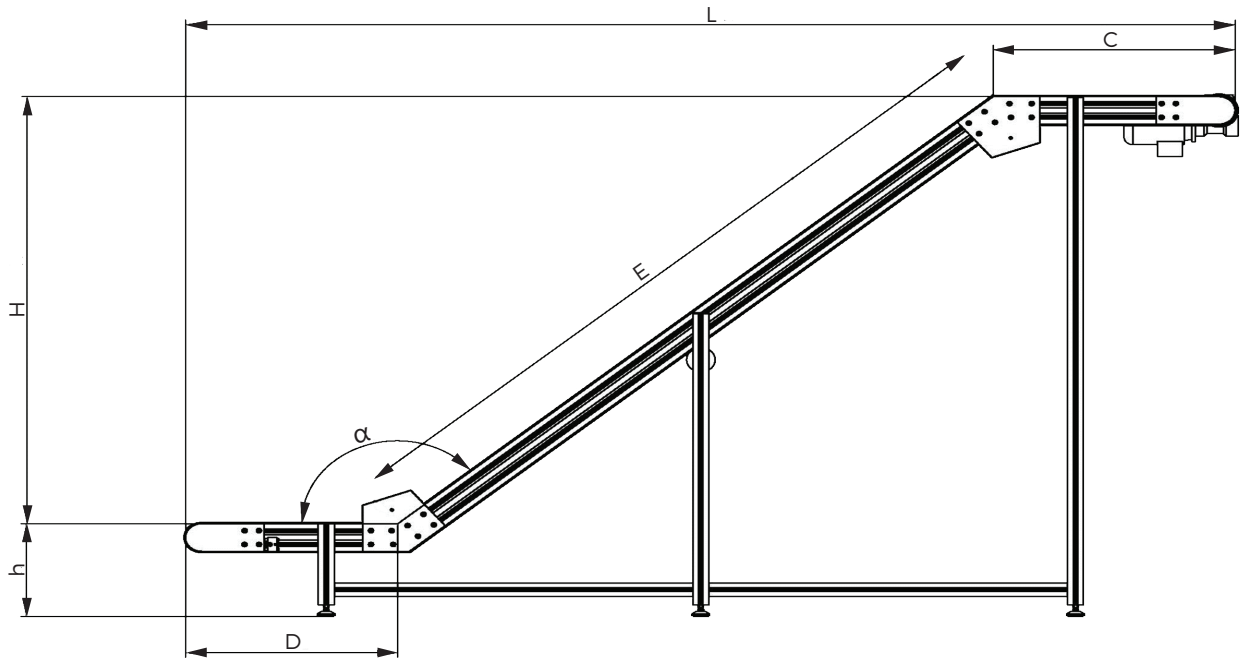


TBS

Conveyors from the Tbs family are special conveyors developed in cooperation with customers according to specific needs (segmented design, special load shape, specific transport path, etc.).

TB90Z

Direct/indirect drive



Code

EXAMPLE OF ORDERING

TB90Z	-	D	-	E	-	C	-	L	-	R	-	300	-	P	-	1	-	40	-	4	-	H	-	h
1		2		2		2		2		3		4		5		6		7		8		9		9

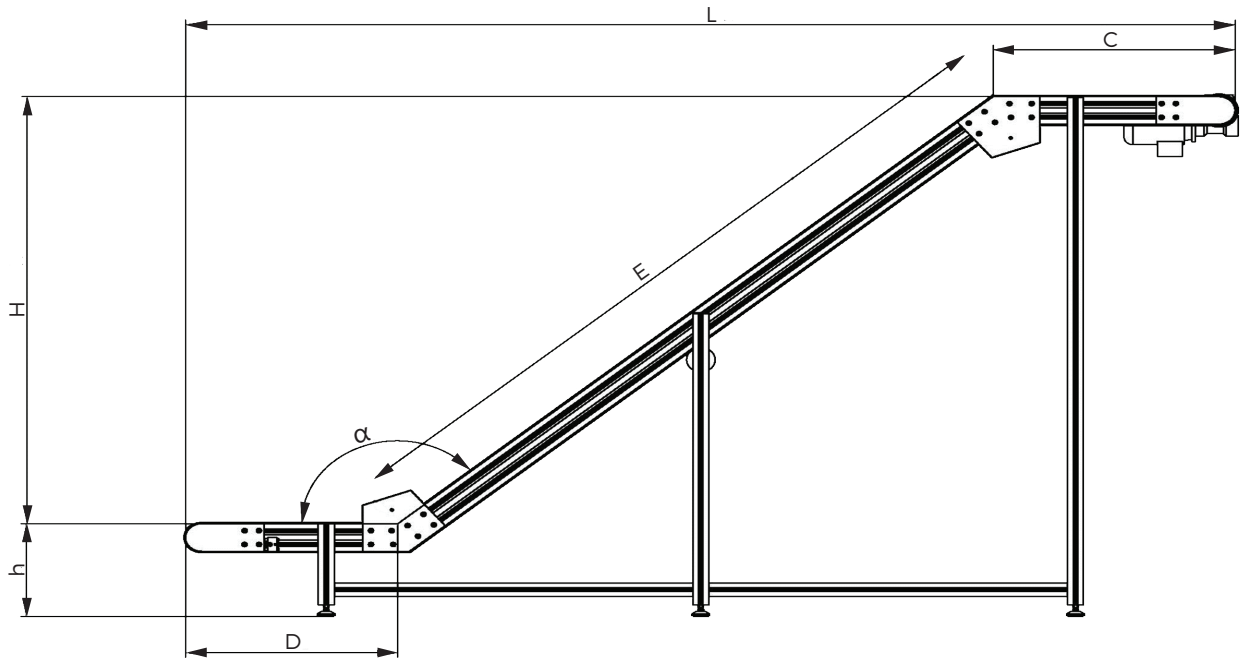
1	Conveyor type	TB90Z
2	Length *D - *E - *C - *L	Contact our technical support
3	Drive side	R = right L = left
4	Belt width	Contact our technical support
5	Belt type	P = PVC A = polyurethane S = special
6	Motor with reducer - orientation	1 - 2 - 3 - 4* only for direct drive
7	Side panels	Contact our technical support
8	Speed	min. 4 m/min - max. 29,2 m/min
9	Height *h - *H	Contact our technical support
10	Angle	α

MOTOR	REDUCER	kW	(m/min)											
BN63 B4	B14 VF49/P i = 100; i = 80; i = 70; i = 60; i = 45; i = 36	0.18	4	5	5,6	6,6	8,8	11,3						
BN71 B4	B14 VF49/P i = 28; i = 24; i = 18; i = 14	0.37							14,6	17	22,6	29,2		



TB45Z

Direct/indirect drive



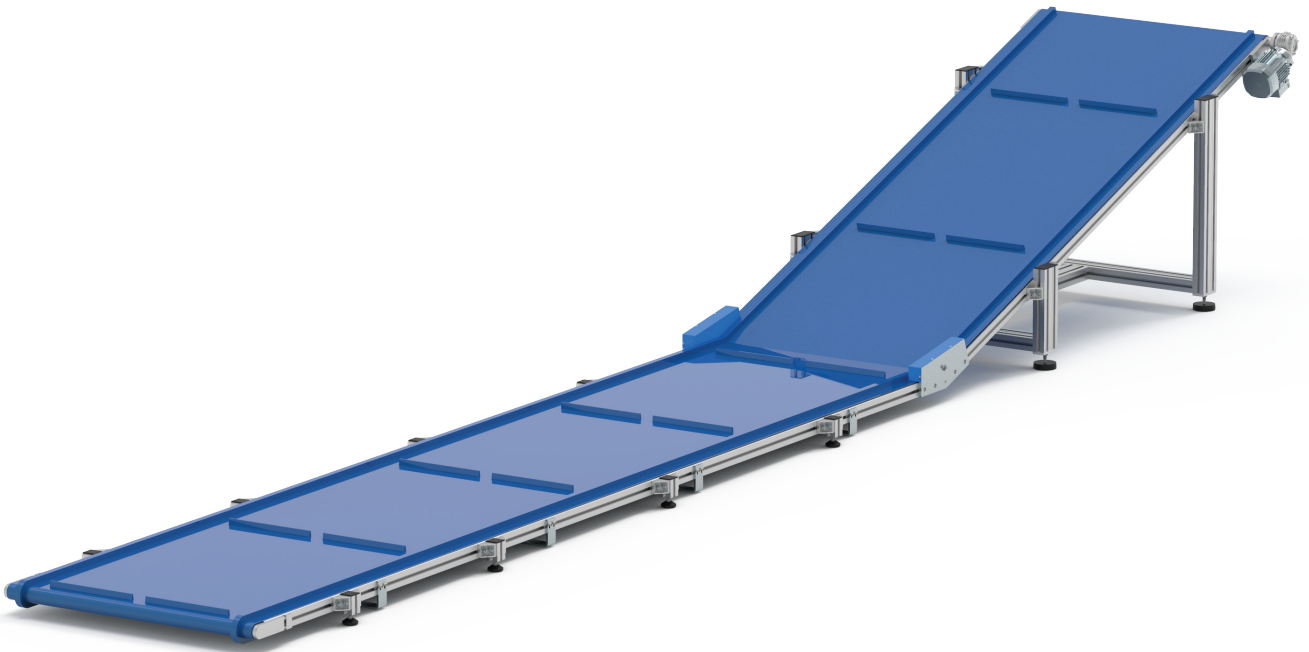
Code

EXAMPLE OF ORDERING

TB45Z	-	D	-	E	-	C	-	L	-	R	-	300	-	P	-	1	-	40	-	3	-	H	-	h
1		2		2		2		2		3		4		5		6		7		8		9		9

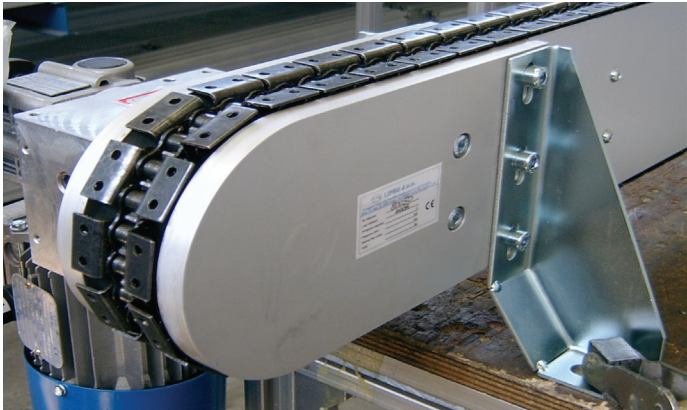
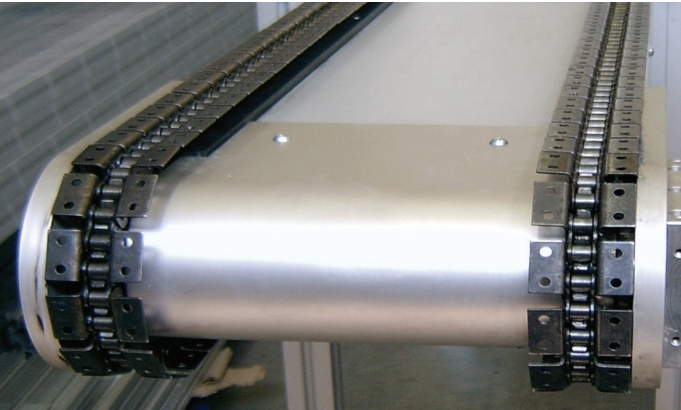
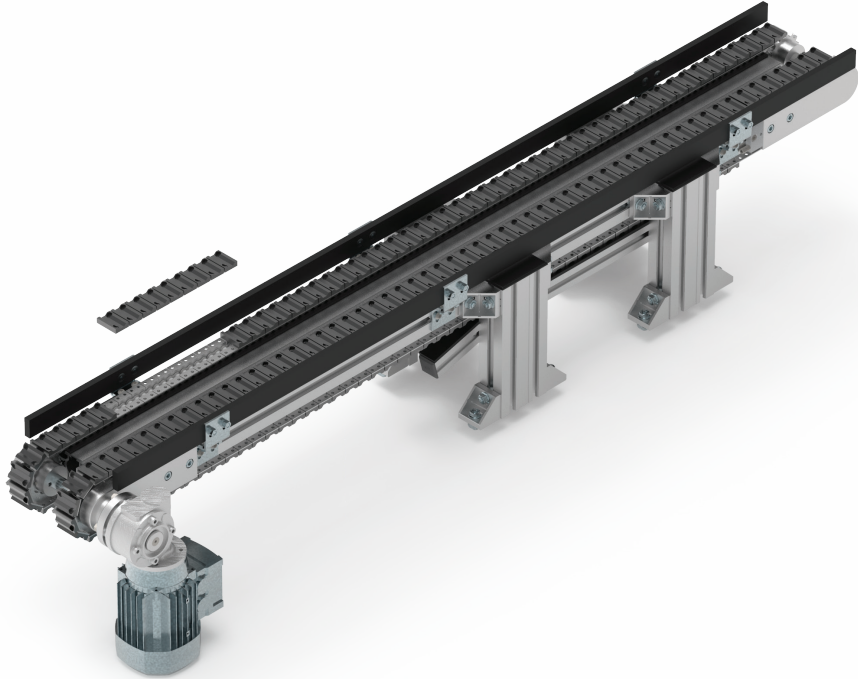
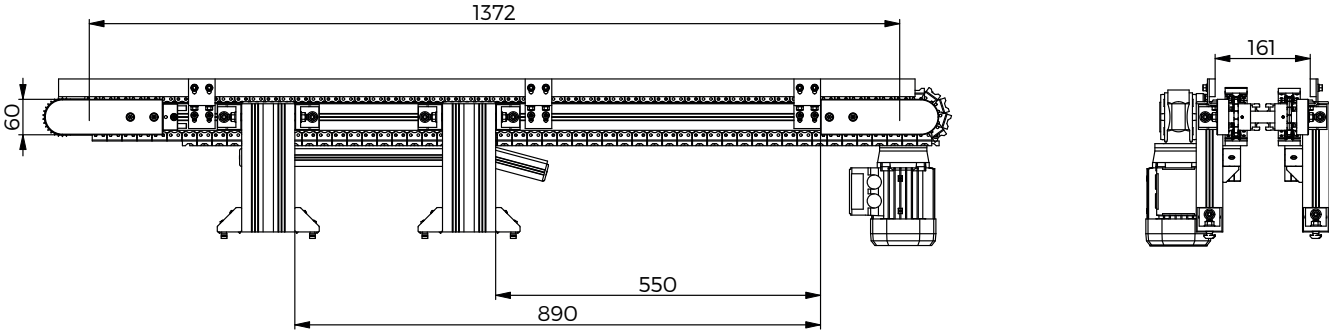
1	Conveyor type	TB45Z
2	Length *D - *E - *C - *L	Contact our technical support
3	Drive side	R = right L = left
4	Belt width	Contact our technical support
5	Belt type	P = PVC A = polyurethane S = special
6	Motor with reducer - orientation	1 - 2 - 3 - 4* only for direct drive
7	Side panels	Contact our technical support
8	Speed	min. 4 m/min - max. 29,2 m/min
9	Height *h - *H	Contact our technical support
10	Angle	α

MOTOR	REDUCER	kW	(m/min)											
BN63 B4	B14 VF49/P i = 100; i = 80; i = 70; i = 60; i = 45; i = 36	0.18	4	5	5,6	6,6	8,8	11,3						
BN71 B4	B14 VF49/P i = 28; i = 24; i = 18; i = 14	0.37							14,6	17	22,6	29,2		



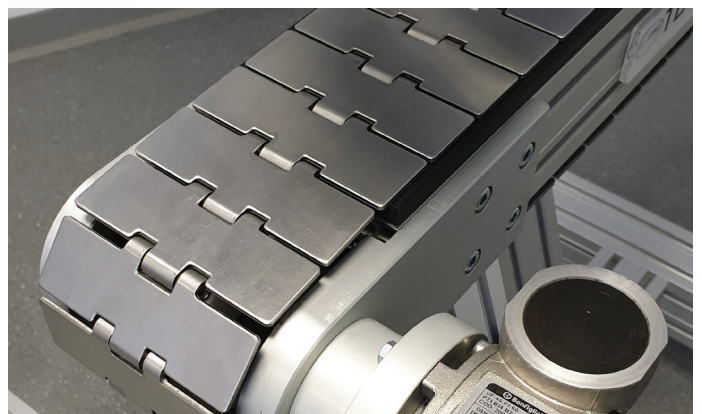
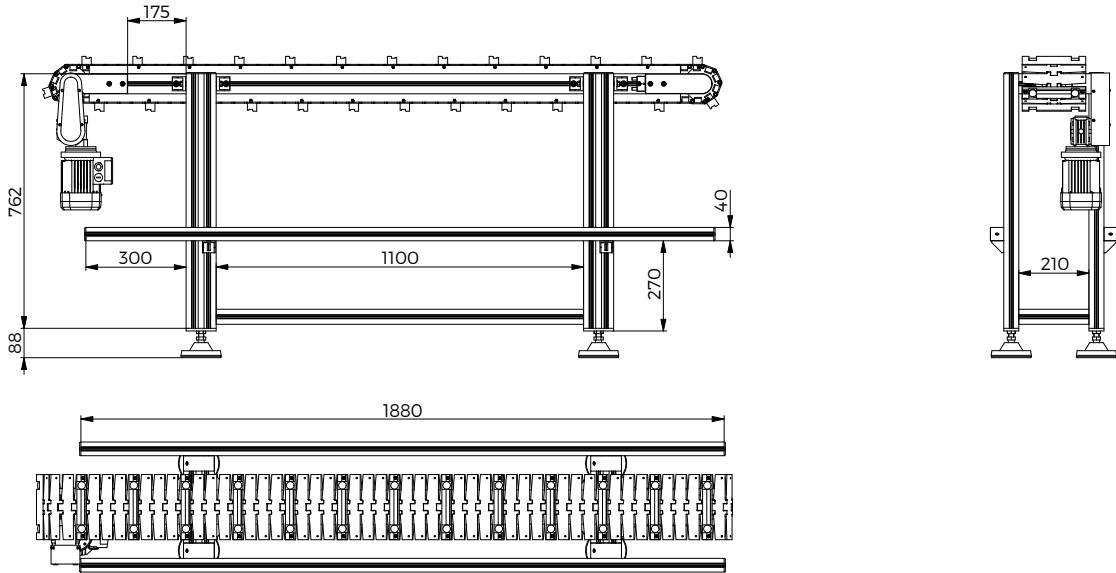
TBS Stepper

TBS - step conveyor



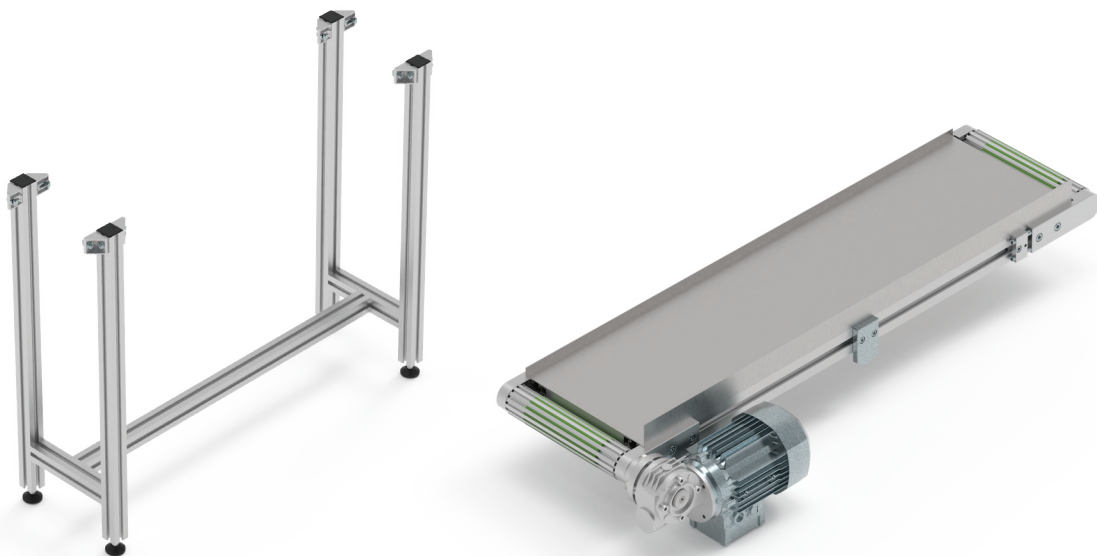
TB45/60/90S

TBS - modular belt



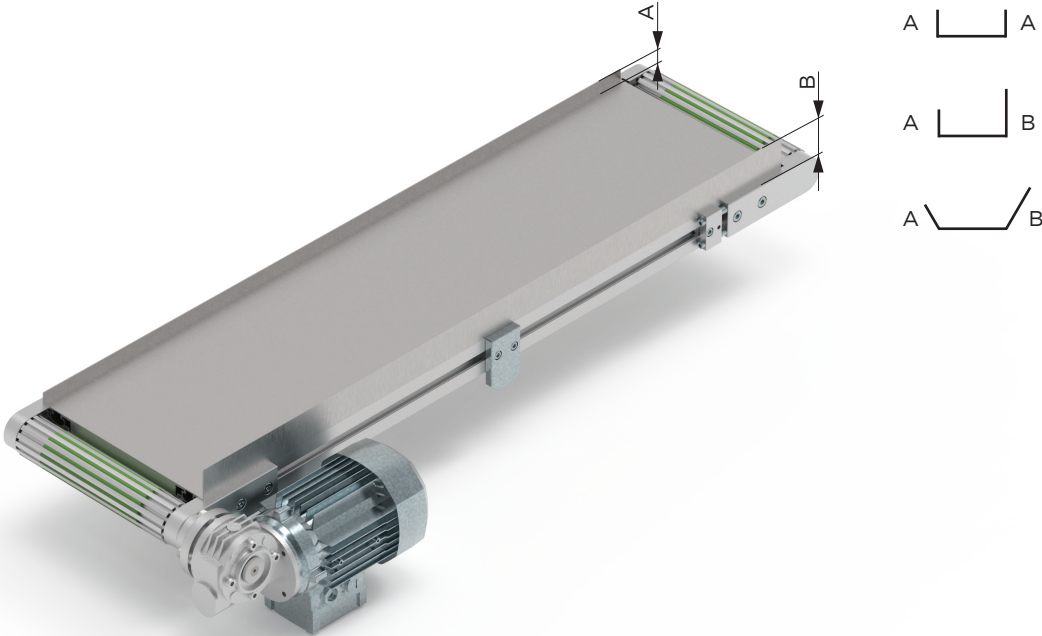


ACCESSORIES



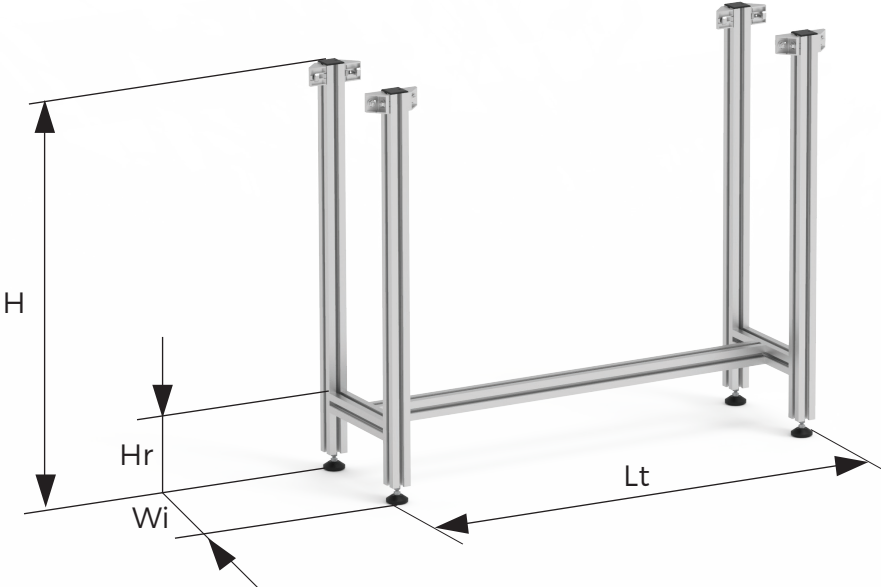
Conveyors may be – upon ordering or subsequently – also equipped with various fittings, such as support frame, additional support axles, adjustable side panels, stop gates, sensor holders, special shape sinks, material routers, etc.

Side panels

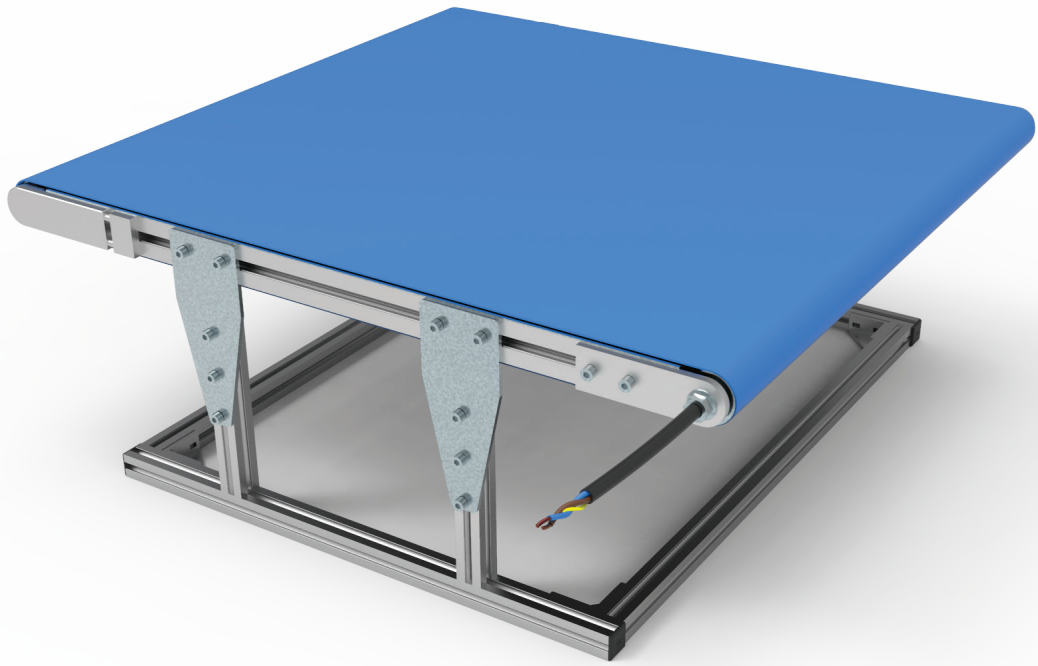


SIDE PANEL TYPES		
Fixed side panels	Y = yes	min. 12 mm - max. 40 mm
Special side panels	S = special	Contact our technical support
No panels	N = no	

Support frame



SUPPORT LEGS	
H	Height
Hr	Crossbar height
Lt	Length
Wi	Width



LIPRO d.o.o.

Dekani 20a,
6271 Dekani
Slovenia (EU)

ID: SI47141948

00386 (0)5 625 13 43 

00386 (0)5 625 13 44 

info@lipro.si 

www.lipro.pro 





We simplify and improve...